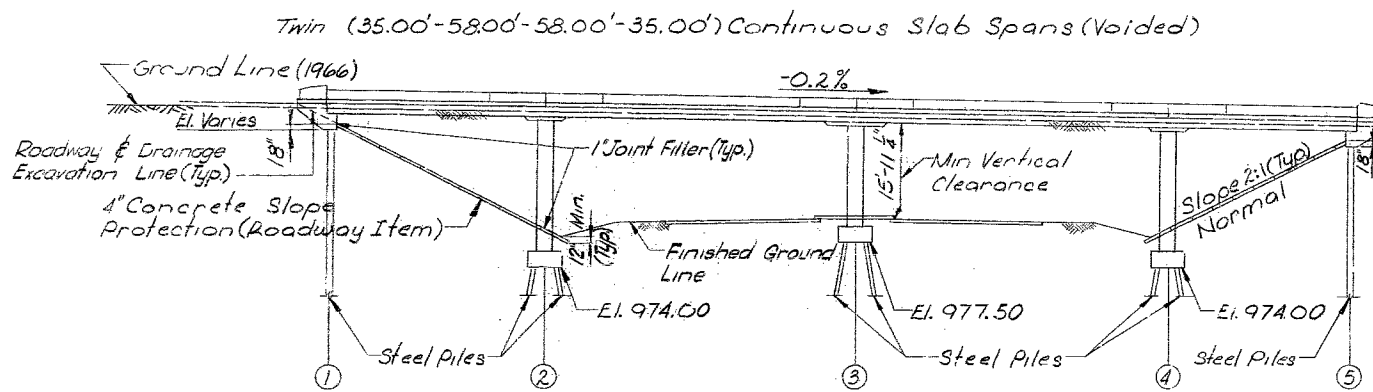
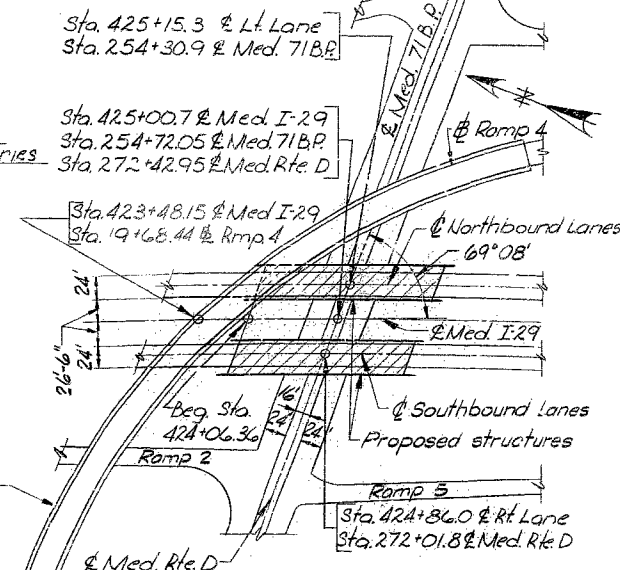


MISSOURI STATE HIGHWAY DEPARTMENT

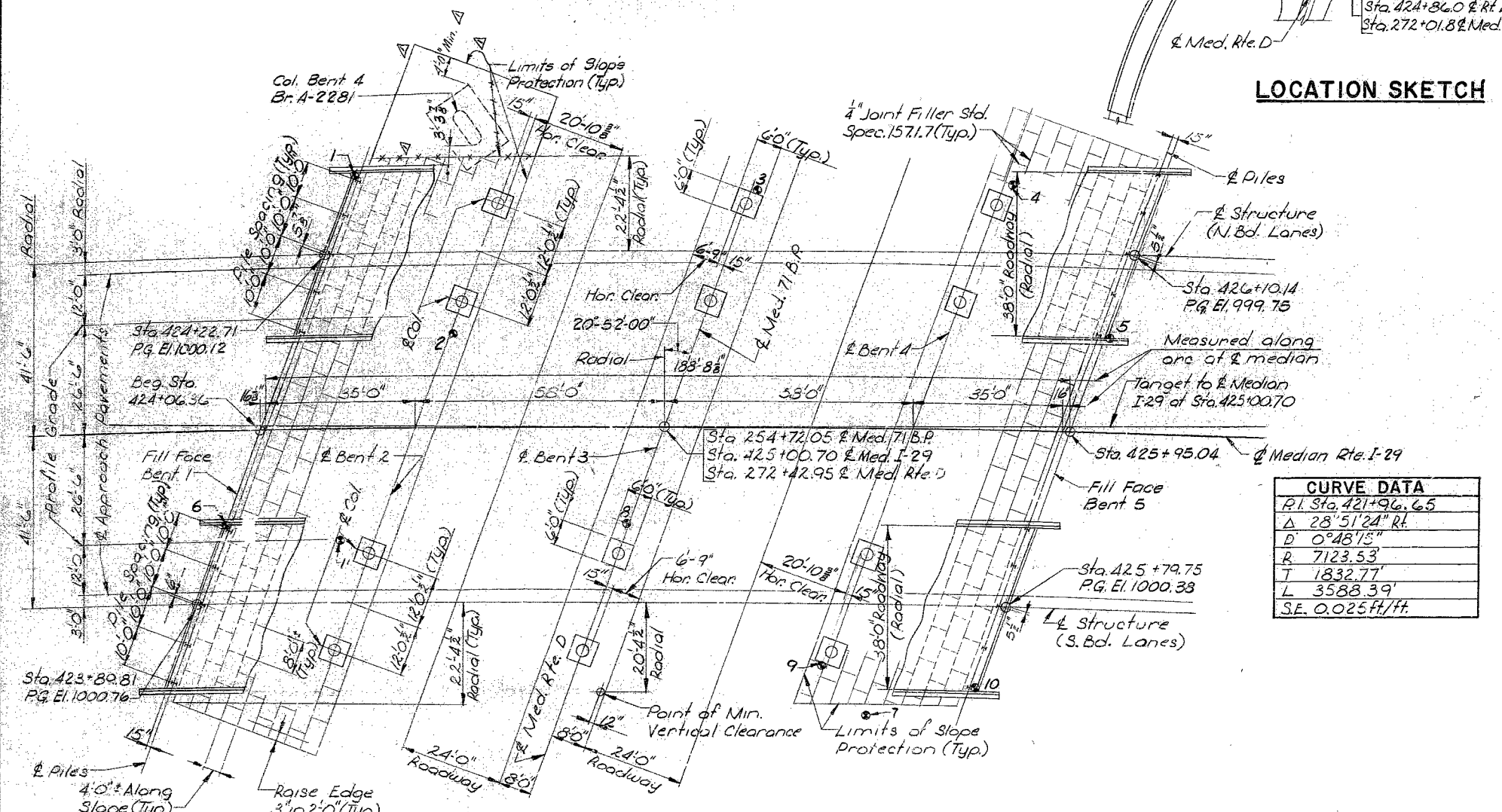
FED. ROAD DIST. NO.	STATE	FED. AID PROJ. NO.	FISCAL YEAR	SHEET NO.	TOTAL SHEETS
5	MO.		19	111	



GENERAL ELEVATION



LOCATION SKETCH



PLAN

GENERAL NOTES

DESIGN SPECIFICATIONS: A.A.S.H.O. - 1965

DESIGN LOADING:

H3 20-44; 15[#]/sq. ft. Future Wearing Surface;
Modified 24,000[#] Tandem Axle;
Earth 120[#]; Equivalent Fluid Pressure 50[#]

DESIGN UNIT STRESSES:

Class B Concrete (Substructure) $f_c = 1,200$ p.s.i.
Class B1 Concrete (Superstructure) $f_c = 1,600$ p.s.i.
Reinforcing Steel $f_s = 20,000$ p.s.i.
Steel Pile (A.S.T.M. A36-66) $f_b = 9,000$ p.s.i.

SURFACE SEAL: Superstructure deck to be surface sealed.

QUANTITY NOTES:

All concrete and reinforcement above footings is included in superstructure quantities.

PILE NOTES:

Minimum energy requirement of hammer based on plan length and design bearing value of piles. Increase by the factor $(W/w)/2W$ when the weight of the ram (W) is less than the weight of the pile (w). All pile shall be driven to practical refusal.

BORING DATA:

For Boring Data see Sheet No. 2 of 9.
⑨ Indicates location of boring.

ITEM	ESTIMATED QUANTITIES		
	SUBSTR.	SUPERSTR.	TOTAL
Class I Excavation for Structures	Cu. Yd. 240	—	240
10" Steel Piles in Place	Lin. Ft. 2010	—	2010
12" Steel Piles in Place	Lin. Ft. 504	—	504
Class B Concrete	Cu. Yd. 48.0	—	48.0
Class B1 Concrete	Cu. Yd. —	1103.6	1103.6
Reinforcing Steel	Lb. 1300	272,720	274,020
Bridge Rail (Single Tube)	Lin. Ft. —	766	766

CURVE DATA	
P.I. Sta.	421+96.65
Δ	28° 51' 24" R.
D	0° 48' 15"
R	7123.53
T	1832.77'
L	3588.39'
S.E.	0.025 ft./ft.

BENT NO.	PILE DATA									
	1		2		3		4		5	
LANE	N.B.D.	S.B.D.	N.C.D.	S.B.D.	N.B.D.	S.B.D.	N.B.D.	S.B.D.	N.B.D.	S.B.D.
Pile Type and Size	10BP42	10BP42	12BP53	10BP42	10BP42	10BP42	10BP42	10BP42	10BP42	10BP42
Number	5	5	8	8	8	8	8	8	5	5
Approximate Length Ft.	52	55	35	33	30	26	34	50	45	45
Design Bearing Tons	32	57	63	57	32	—	—	—	—	—
Hammer Energy Req. Ft.Lbs.	7,200	13,400	14,800	13,400	7,200	—	—	—	—	—

BENCH MARK: B.M. #34 Spike & Washers in P.P. 149' Lt. of Survey Line Sta. 424+16 ± El. 1000.44

BRIDGE OVER ROUTES D AND 71 B.P.
STATE ROAD INTERSTATE ROUTE 29
ABOUT 10 MILES NORTH OF PARKVILLE
PROJECT NO. I-29-(12) (RTE. I-29) STA. 424+06.36
PLATTE COUNTY



SUBMITTED BY: *E. L. Fieldhamer*
REGISTERED PROFESSIONAL ENGINEER
MISSOURI NO. E-10795

SUBMITTED BY: *W. O. Casey* DATE Feb 13, 1966
BRIDGE ENGINEER
APPROVED BY: *M. J. Snider* DATE Feb 13, 1966
CHIEF ENGINEER

DESIGNED SEPT. 1967 BY J. PARIKH
DETAILED SEPT. 1967 BY HOHLT
CHECKED OCT. 1967 BY MALI

R. W. BOOKER & ASSOCIATES, INC.
CONSULTING ENGINEERS
1139 OLIVE STREET
ST. LOUIS, MISSOURI 63101

Note: This drawing is not to scale. Follow dimensions.

Revised 4-6-70

Sheet No. 1 of 10

STD. 54.00
A-2282

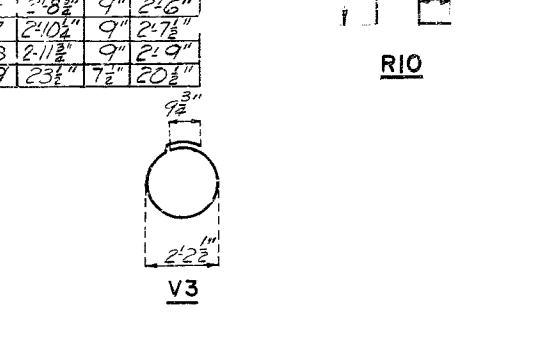
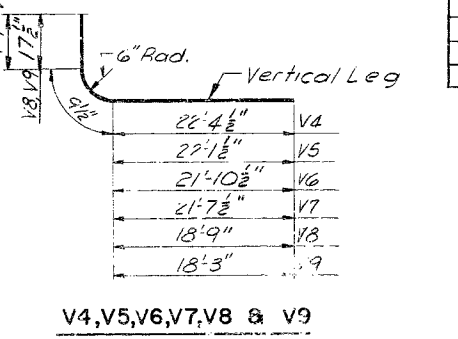
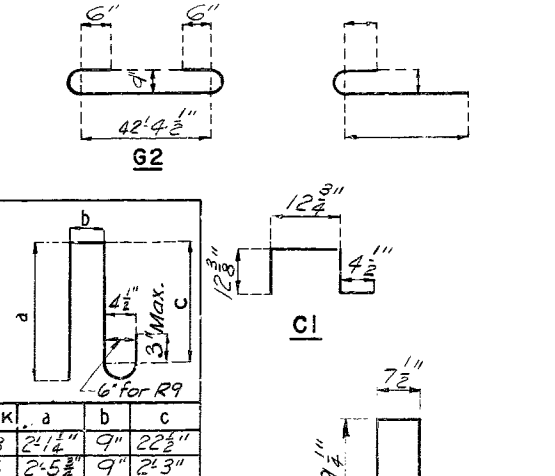
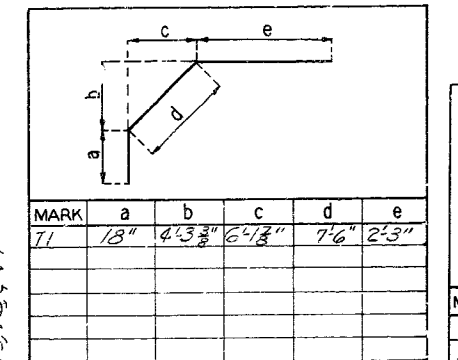
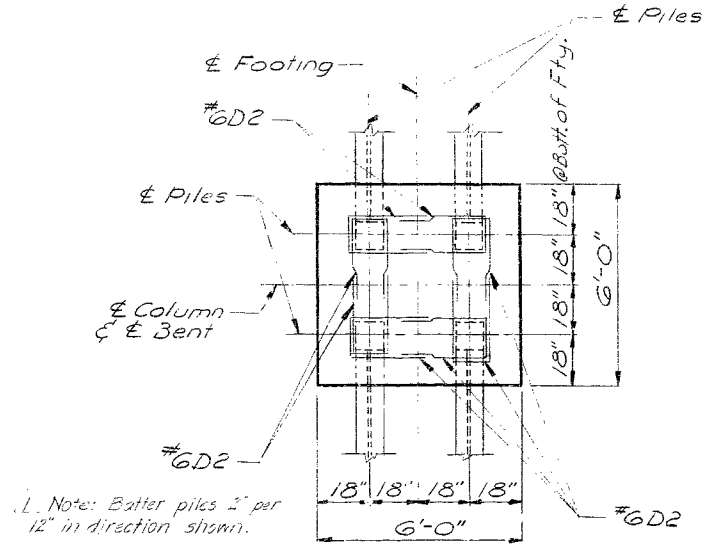
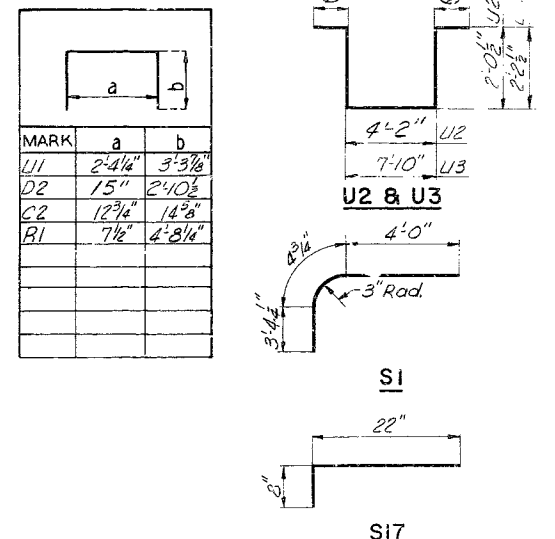
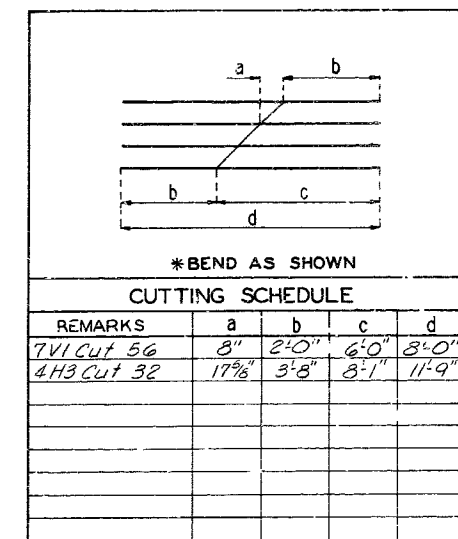
MISSOURI STATE HIGHWAY DEPARTMENT

FED. ROAD DIST. NO.	STATE	FED. AID PROJ. NO.	FISCAL YEAR	SHEET NO.	TOTAL SHEETS
5	MO.		19	117	

COMPLETE BILL OF REINFORCING STEEL

NO.	SIZE	LENGTH	MARK	LOCATION	NO.	SIZE	LENGTH	MARK	LOCATION	NO.	SIZE	LENGTH	MARK	LOCATION
SUPERSTRUCTURE INT. BENT 2														
216	#6	7'-9"	S1	Slab	32	#10	43'-0"	G1	Beam					
216	#5	20'-0"	S2	"	32	#11	45'-9"	G2	"					
112	#11	30'-6"	S3	"	216	#6	9'-3"	U2	"					
108	#11	20'-9"	S4	"										
104	#10	10'-9"	S5	"	84	#3	7'-9"	V3	Column					
216	#5	27'-9"	S6	"	16	#11	24'-9"	V4	"					
56	#11	35'-6"	S7	"	16	#11	24'-3"	V6	"					
54	#11	26'-0"	S8	"										
52	#11	16'-0"	S9	"										
112	#8	37'-3"	S10	"										
108	#8	25'-9"	S11	"	SUPERSTRUCTURE INT. BENT 3									
104	#7	16'-9"	S12	"	34	#11	45'-9"	G2	Beam					
112	#10	60'-0"	S13	"	30	#11	42'-9"	G3	"					
08	#10	36'-0"	S14	"	176	#5	13'-3"	U3	"					
104	#9	27'-0"	S15	"										
8	#4	21'-0"	S16	"	70	#3	7'-9"	V3	Column					
204	#4	2'-6"	S17	"	24	#10	21'-0"	V8	"					
1696	#5	22'-3"	S18	"	24	#10	20'-6"	V9	"					
SUPERSTRUCTURE INT. BENT 4														
752	#5	3'-6"	C1	Curb	32	#11	45'-9"	G2	Beam					
64	#5	3'-6"	C2	"	32	#10	42'-9"	G4	"					
8	#6	22'-9"	C4	"	216	#6	9'-3"	U2	"					
32	#5	29'-6"	C5	"										
8	#6	22'-3"	C6	"										
8	#5	22'-0"	C7	"	84	#3	7'-9"	V3	Column					
8	#5	22'-6"	C8	"	16	#11	24'-6"	V5	"					
					16	#11	24'-0"	V7	"					
SUBSTRUCTURE INT. BENTS 2,3 & 4														
32	#6	10'-0"	R1	End Post	112	#5	2'-6"	D1	Footings					
16	#5	4'-9"	R2	"	96	#6	7'-0"	D2	"					
16	#5	5'-6"	R3	"										
8	#5	6'-0"	R4	"										
8	#5	6'-3"	R5	"										
8	#5	6'-6"	R6	"										
8	#5	6'-9"	R7	"										
16	#5	7'-0"	R8	"										
SUPERSTRUCTURE END BENT 1														
24	#6	43'-6"	H1	Beam										
160	#5	9'-0"	U1	"										
8	#6	8'-6"	H2	Wings										
16	#6	11'-9"	H3	"										
28	#4	8'-0"	V1	"										
8	#6	11'-3"	T1	"										
SUPERSTRUCTURE END BENT 5														
24	#6	43'-0"	H4	Beam										
160	#5	9'-0"	U1	"										
8	#6	8'-6"	H2	Wings										
16	#6	11'-9"	H3	"										
28	#4	8'-0"	V1	"										
8	#6	11'-3"	T1	"										

BENDING SKETCHES & CUTTING DIAGRAMS



83

No. 90.4 Revised Aug. 1963 Dec. 1964

DETAILED OCT. 1967 BY STAFFORD
CHECKED JCT 1967 BY MALI

R W BOOKER & ASSOCIATES, INC.
CONSULTING ENGINEERS
1136 OLIVE STREET
ST. LOUIS, MISSOURI 63101

Note: This drawing is not to scale. Follow dimensions.

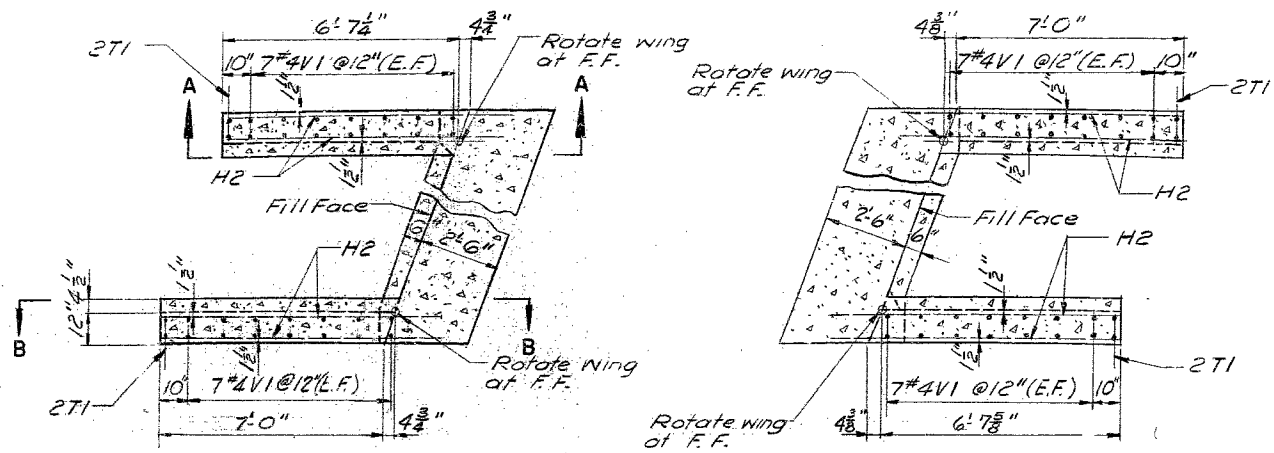
Sheet No. 3 of 10.

BRIDGE OVER ROUTES D AND 71 B.P.
STATE ROAD INTERSTATE ROUTE 29
ABOUT 10 MILES NORTH OF PARKSVILLE
PROJECT NO. I-29-(112)(RTE. I-29) STA. 124+06.36
PLATTE COUNTY

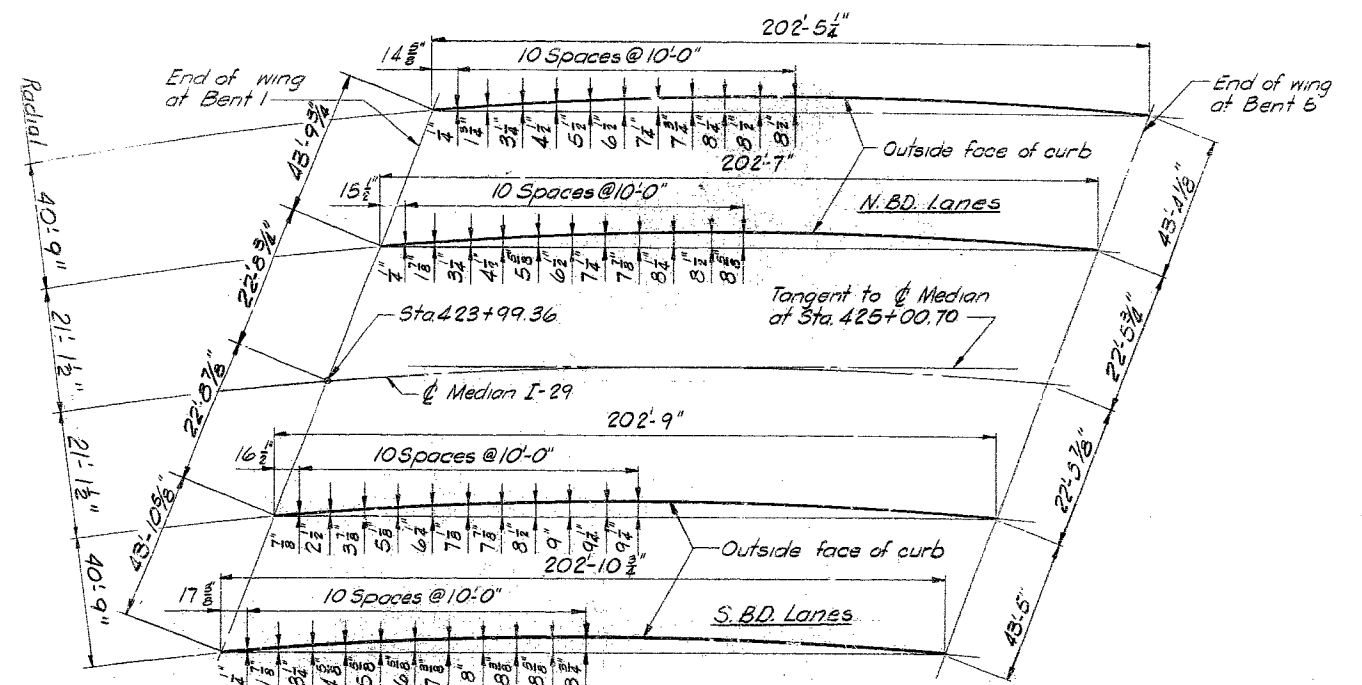
A-2282

MISSOURI STATE HIGHWAY DEPARTMENT

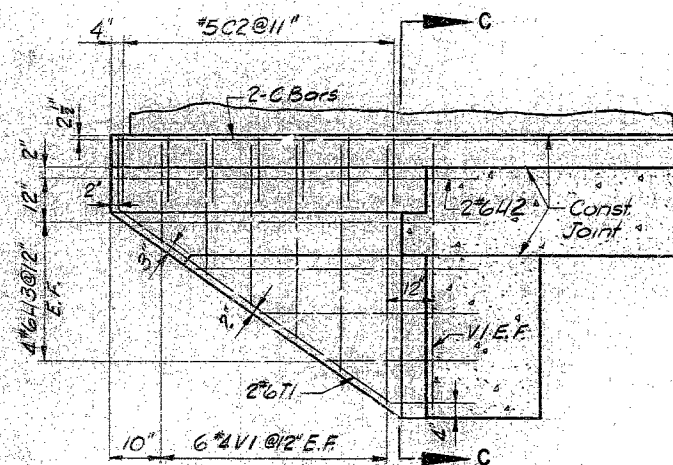
FED. ROAD DIST. NO.	STATE	FED. AID PROJ. NO.	FISCAL YEAR	SHEET NO.	TOTAL SHEETS
5	MO.		19	115	



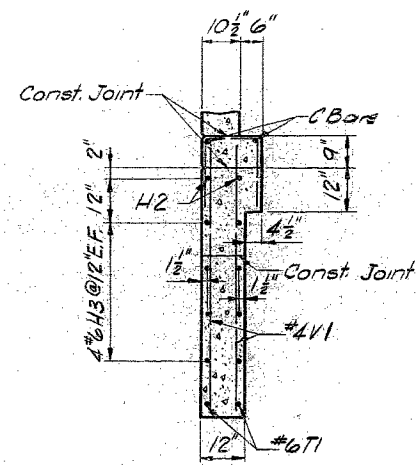
PLAN OF WINGWALLS



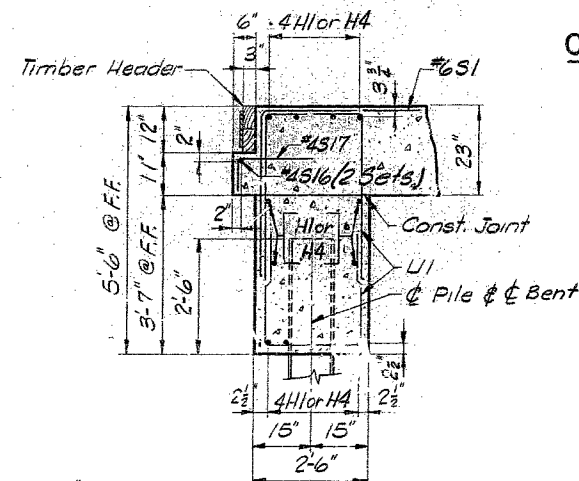
CURVE OFFSETS



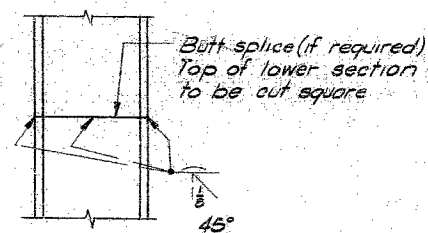
SECTION A-A
(Section B-B opposite hand)



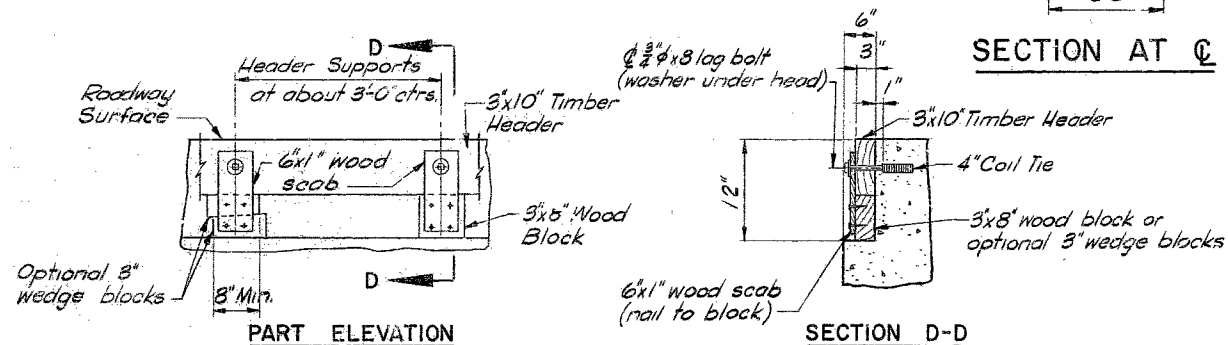
SECTION C-C



SECTION AT C



STEEL PILE SPLICE



TIMBER HEADER DETAIL

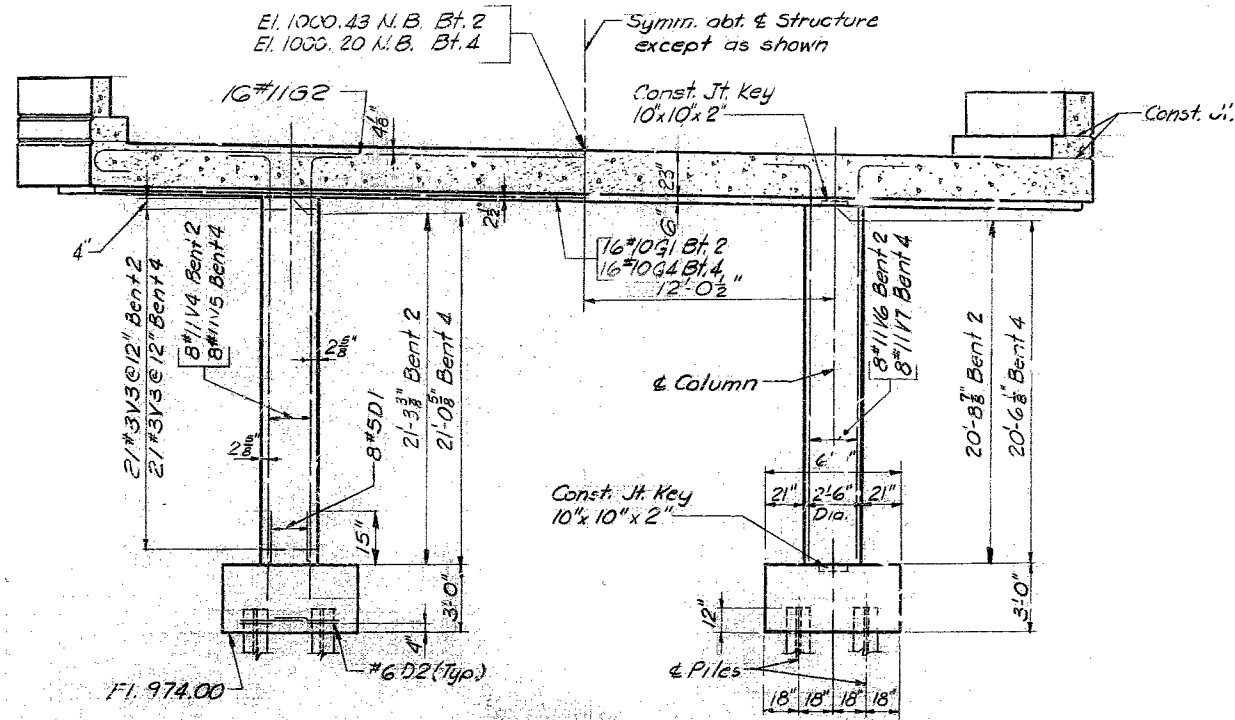
NOTES:

Cost of Timber Headers complete in place to be included in price bid for Concrete.
For reinforcing in Curb, Parapet and End Posts see Sheets No. 9 of 10 and 10 of 10.
Wingwalls are shown on horizontal curve but may be constructed straight if approved by the Engineer.

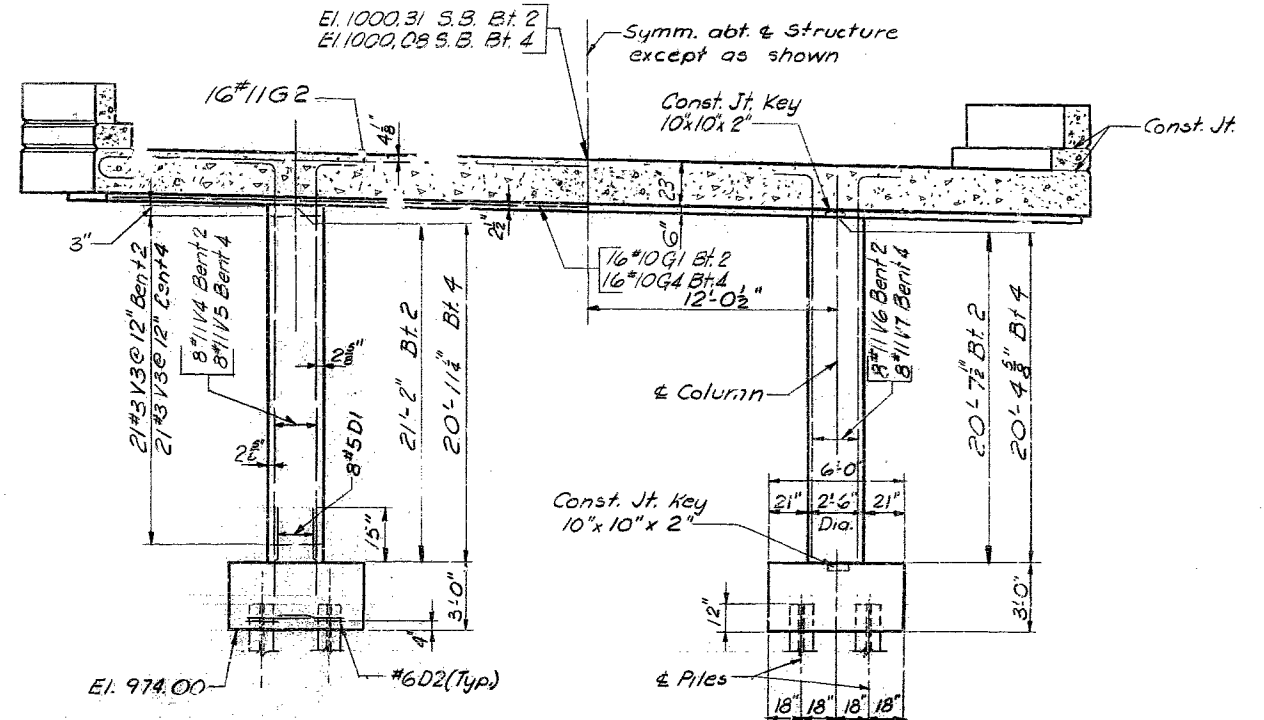
BRIDGE OVER ROUTES D AND 71 B.P.
STATE ROAD INTERSTATE ROUTE 29
ABOUT 10 MILES NORTH OF PARKVILLE
PROJECT NO. I-29-1(12) (RTE. I-29) STA. 424+06.36
PLATTE COUNTY

MISSOURI STATE HIGHWAY DEPARTMENT

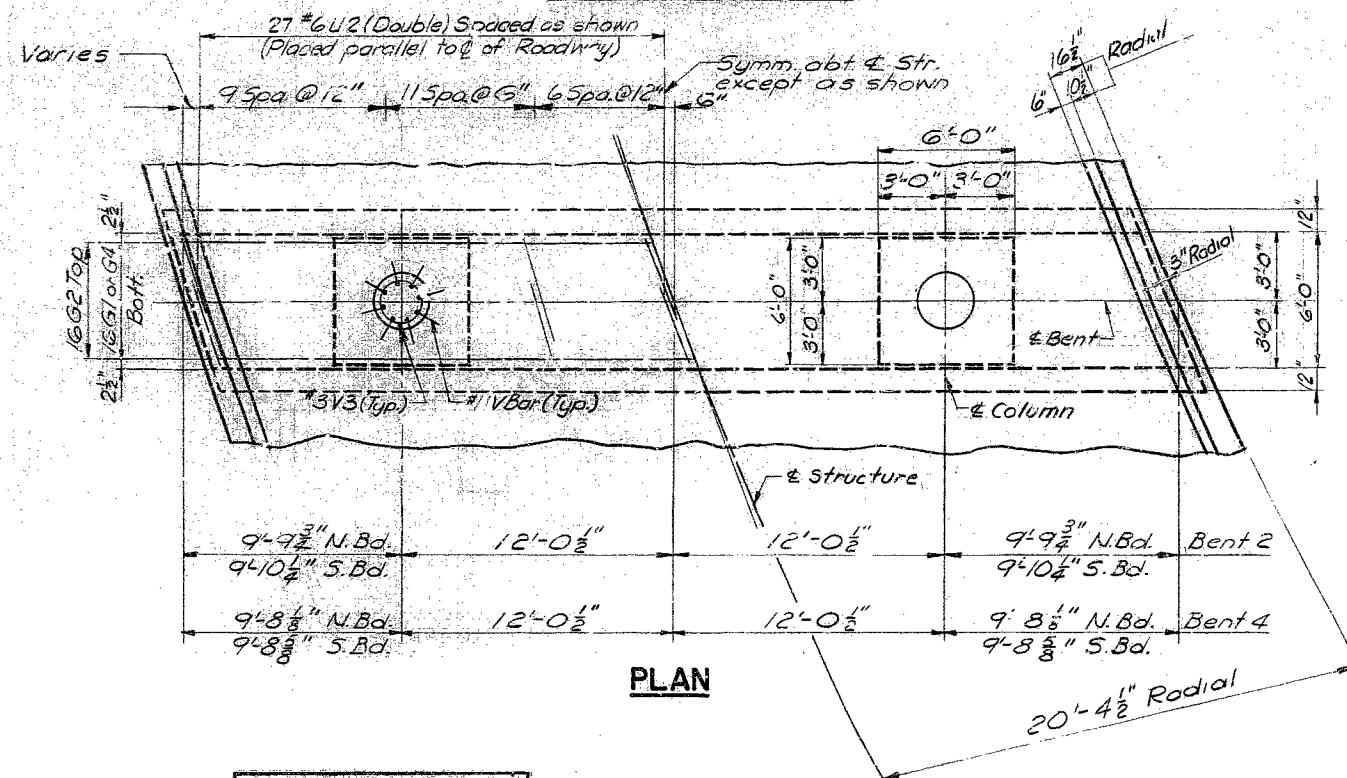
FED. ROAD DIST. NO.	STATE	FED. AID PROJ. NO.	FISCAL YEAR	SHEET NO.	TOTAL SHEETS
5	MO.		55	116	



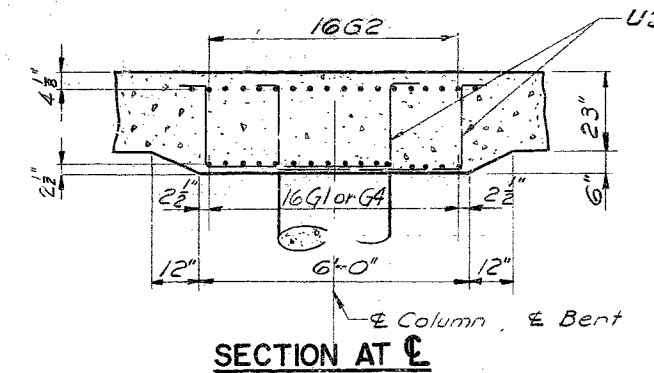
ELEVATION NORTHBOUND LANES



ELEVATION SOUTHBOUND LANES



PLAN



SECTION AT C

NOTES:
Bottom of drop panel to be parallel to top of slab both longitudinally and transversely.
For Pile Splice Detail see Sheet No. 5 of 10.
For Footing Plan see Sheet No. 3 of 10.

INTERMEDIATE BENTS NO. 2 & 4

BRIDGE OVER ROUTES D AND 71 B.P.
STATE ROAD INTERSTATE ROUTE 29
ABOUT 10 MILES NORTH OF PARKVILLE
PROJECT NO. I-29-1(12)(RTE. I-29) STA. 424+06.36
PLATTE COUNTY

86
DETAILED SEPT. 1967 BY STAFFORD
CHECKED OCT. 1967 BY R. PARIKH

R. W. BOOKER & ASSOCIATES, INC.
CONSULTING ENGINEERS
1139 OLIVE STREET
ST. LOUIS, MISSOURI 63101

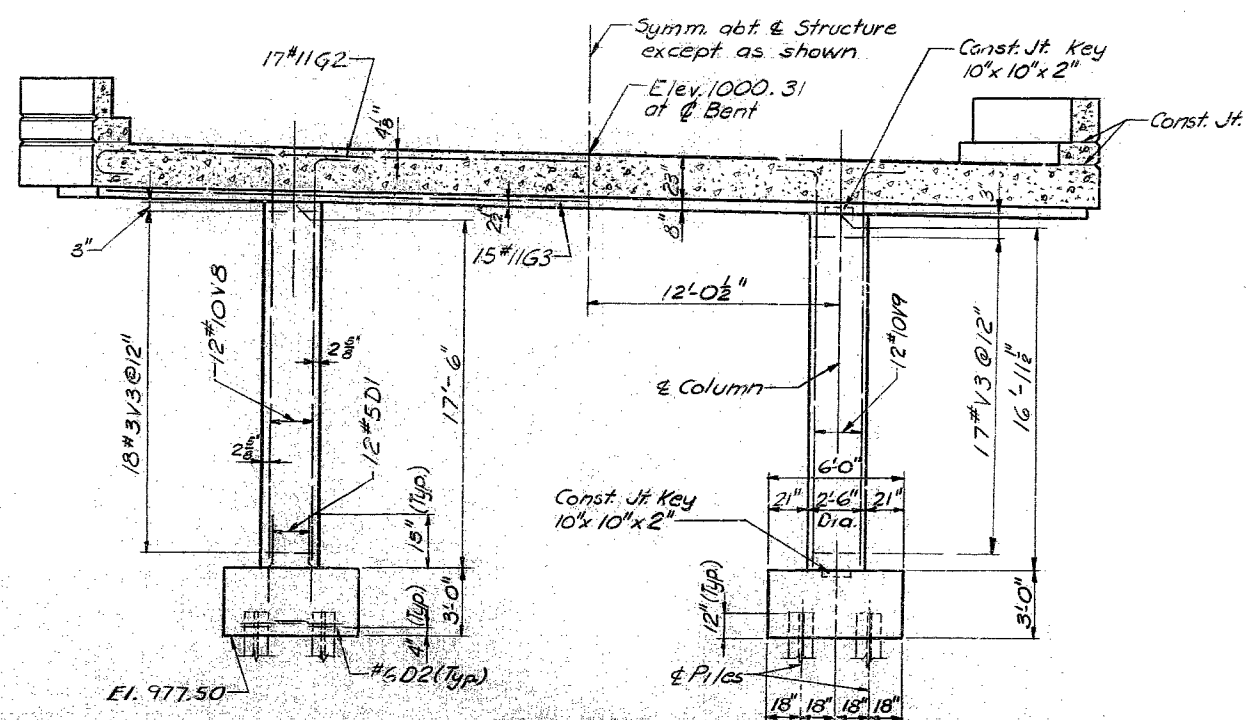
Note: This drawing is not to scale. Follow dimensions.

Sheet No. 6 of 10

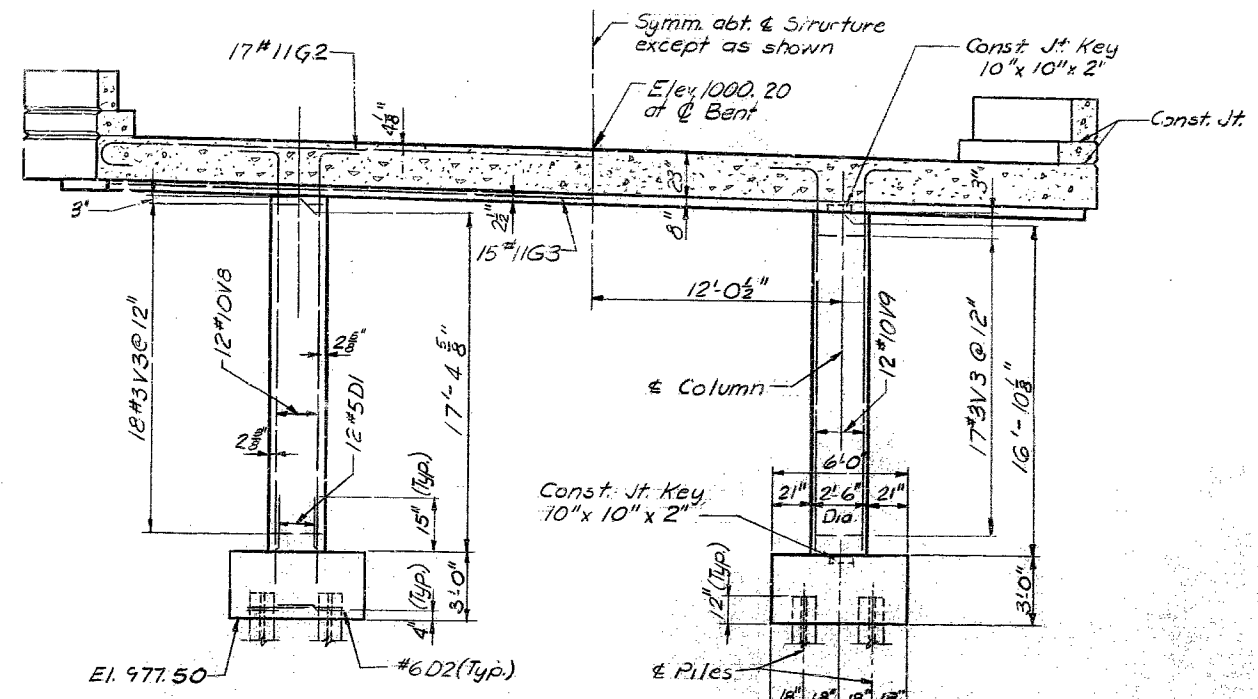
A-2282

MISSOURI STATE HIGHWAY DEPARTMENT

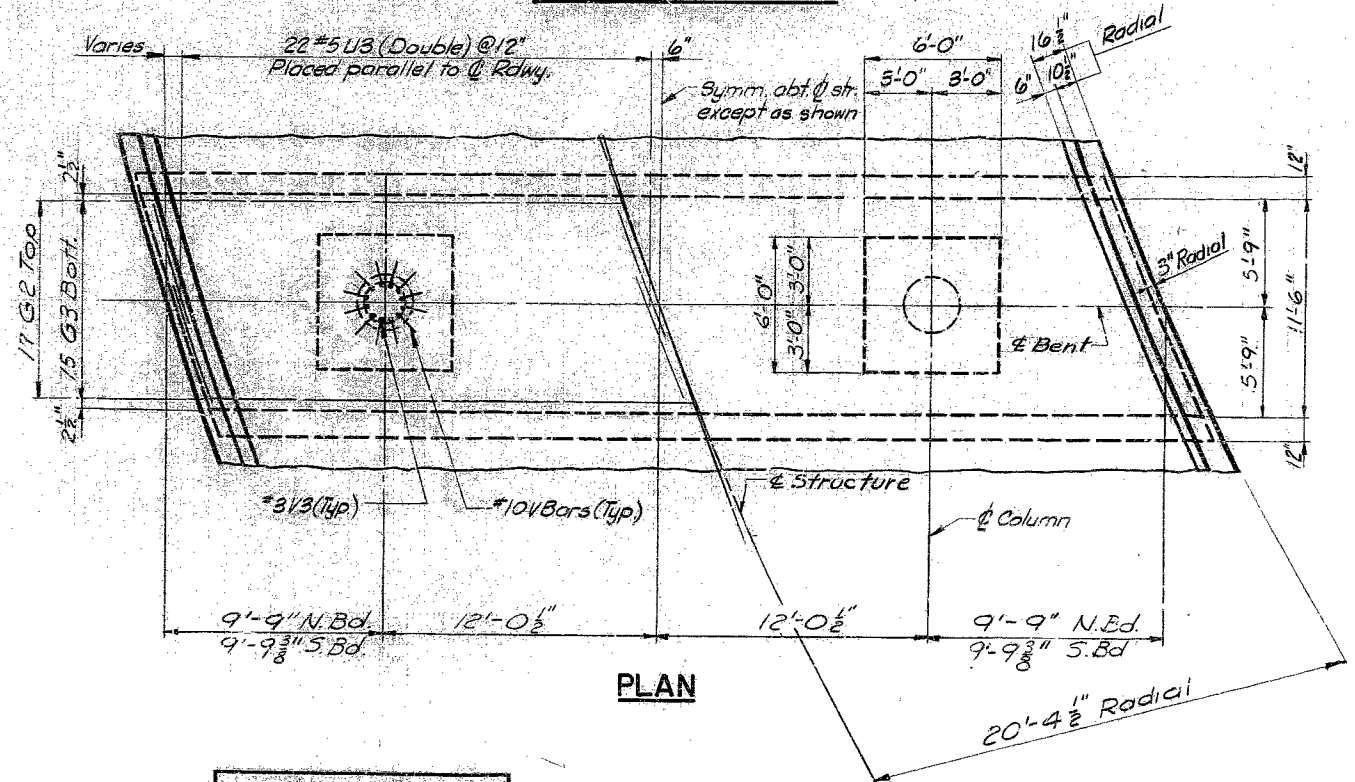
FED. ROAD DIST. NO.	STATE	FED. AID PROJ. NO.	FISCAL YEAR	SHEET NO.	TOTAL SHEETS
5	MO.		19	17	



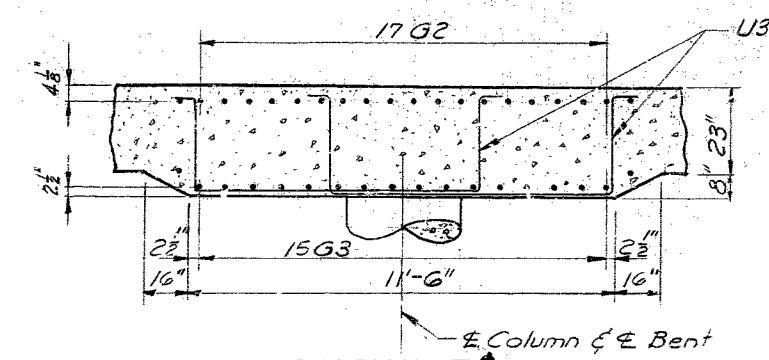
ELEVATION NORTHBOUND LANES



ELEVATION SOUTHBOUND LANES



PLAN



SECTION AT C

NOTES:
 Bottom of drop panel to be parallel to top of slab both longitudinally and transversely.
 For Pile Splice Detail see Sheet No. 5 of 10.
 For Footing Plan see Sheet No. 3 of 10.

INTERMEDIATE BENT NO. 3

BRIDGE OVER ROUTES D AND 71 B.P.
 STATE ROAD INTERSTATE ROUTE 29
 ABOUT 10 MILES NORTH OF PARKVILLE
 PROJECT NO. I-29-1(12)(RTE. I-29) STA. 424+06.36
 PLATTE COUNTY

87
 DETAILED Sept. 1967 BY Braun
 CHECKED OCT 1967 BY R. PARIKU

R. W. BOOKER & ASSOCIATES, INC.
 CONSULTING ENGINEERS
 1199 OLIVE STREET
 ST. LOUIS, MISSOURI 63010

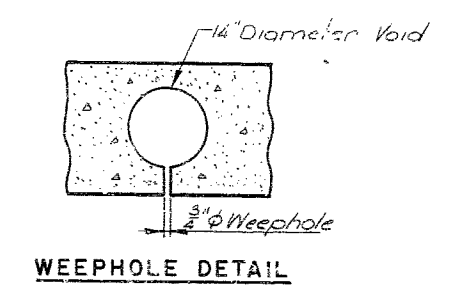
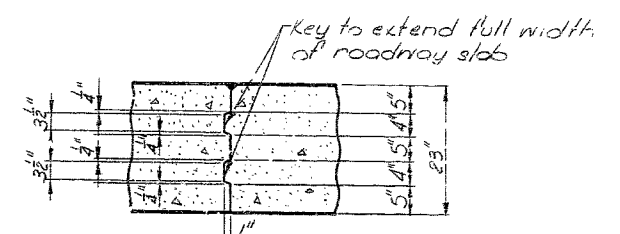
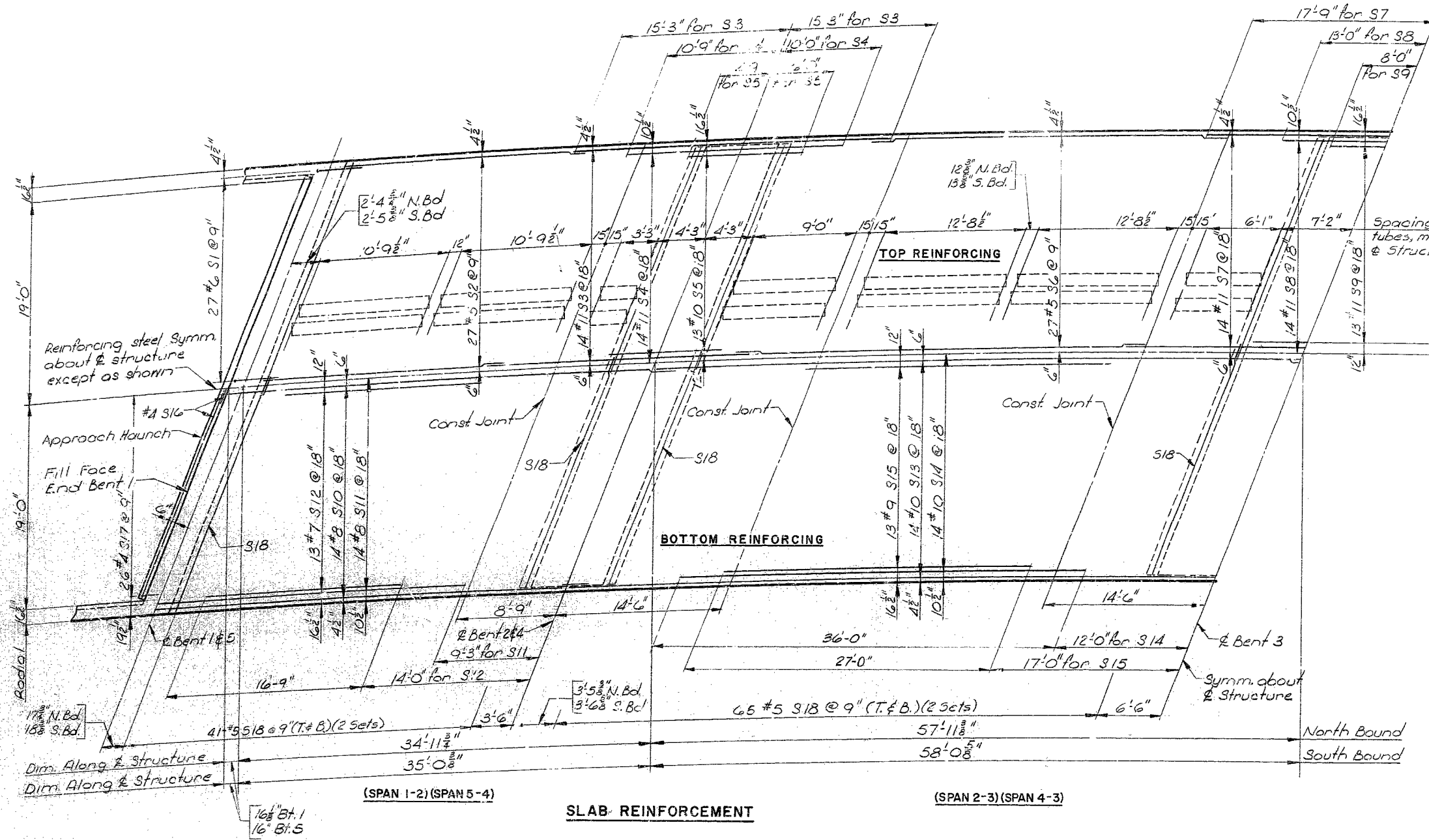
Note: This drawing is not to scale. Follow dimensions.

Sheet No. 7 of 10

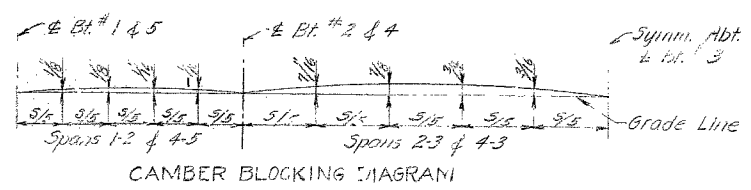
A-2282

MISSOURI STATE HIGHWAY DEPARTMENT

FED. ROAD DIST. NO.	STATE	FED. AID PROJ. NO.	FISCAL YEAR	SHEET NO.	TOTAL SHEETS
5	MO.		19	13	



NOTES:
 Fiber tubes for producing voids shall have an outside diameter of 14.0" and a wall thickness of 0.250" and shall be anchored to joists carrying the floor form, at not more than 4'-0" centers. See Special Provisions for metal tube alternate for voids.
 One 3/4" φ weep hole shall be provided near each end of each void. Weep holes shall be placed in straight lines parallel to bents. Finish each side of joint with 1/4" radius edging tool.
 The contractor shall use an approved oscillating screed type, self-propelled mechanical finishing machine and shall pour and satisfactorily finish the roadway slab at a rate of not less than 49 cubic yards per hour. He shall observe the transverse construction joints shown on plans unless he can demonstrate to the engineer that he is equipped to pour and satisfactorily finish the roadway slab at a rate which will permit a continuous pouring through some or all of these joints. Finishing machine load will not be permitted on concrete less than 48 hours old.
 For Section thru slab see Sheet 9 of 10.



BRIDGE OVER ROUTES D AND 71 B.P.
 STATE ROAD INTERSTATE ROUTE 29
 ABOUT 10 MILES NORTH OF PARKSVILLE
 PROJECT NO. I-29-1(12)(RTE. I-29) STA. 424+06.36
 PLATTE COUNTY

DETAILED OCT. 1967 BY HOHLT
 CHECKED OCT. 1967 BY R. PARIKH

R. W. BOOKER & ASSOCIATES, INC.
 CONSULTING ENGINEERS
 1339 OLIVE STREET
 ST. LOUIS, MISSOURI 63101

Note: This drawing is not to scale. Follow dimensions.

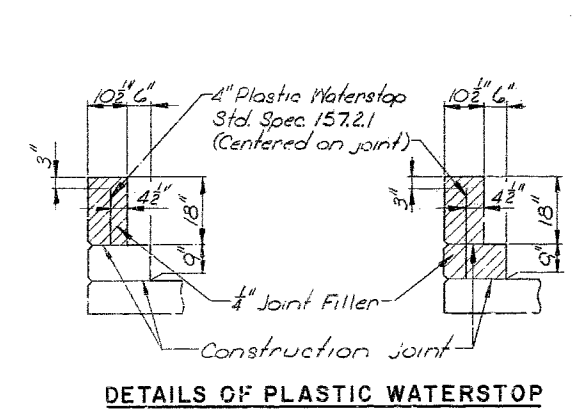
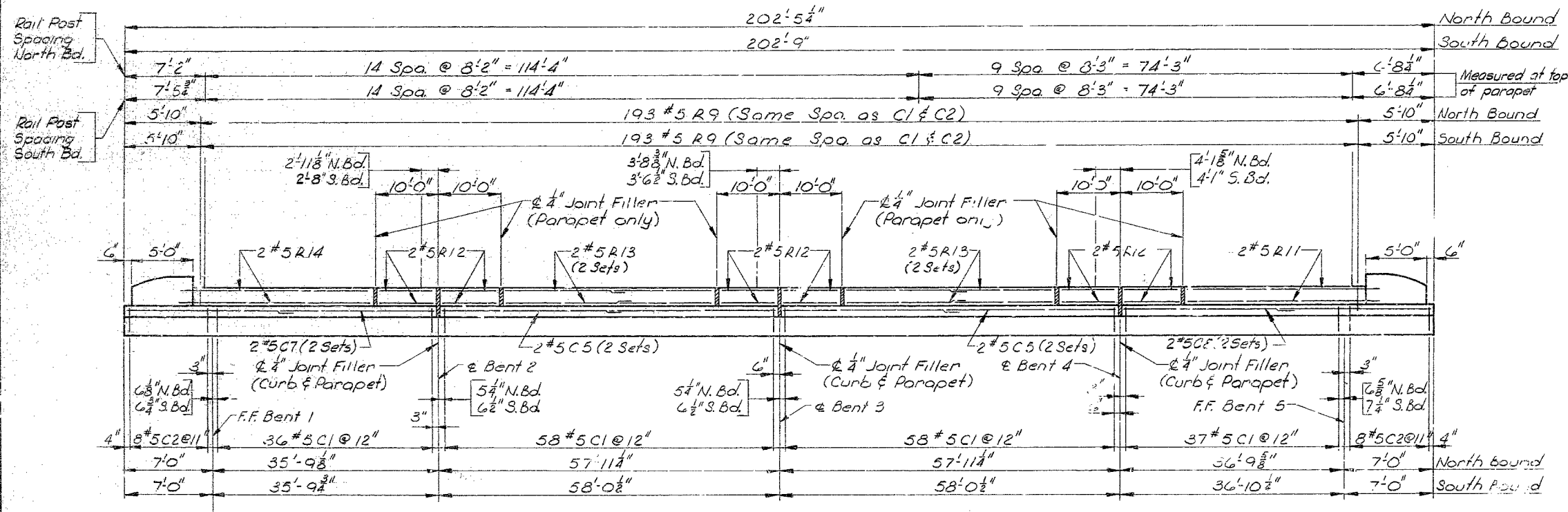
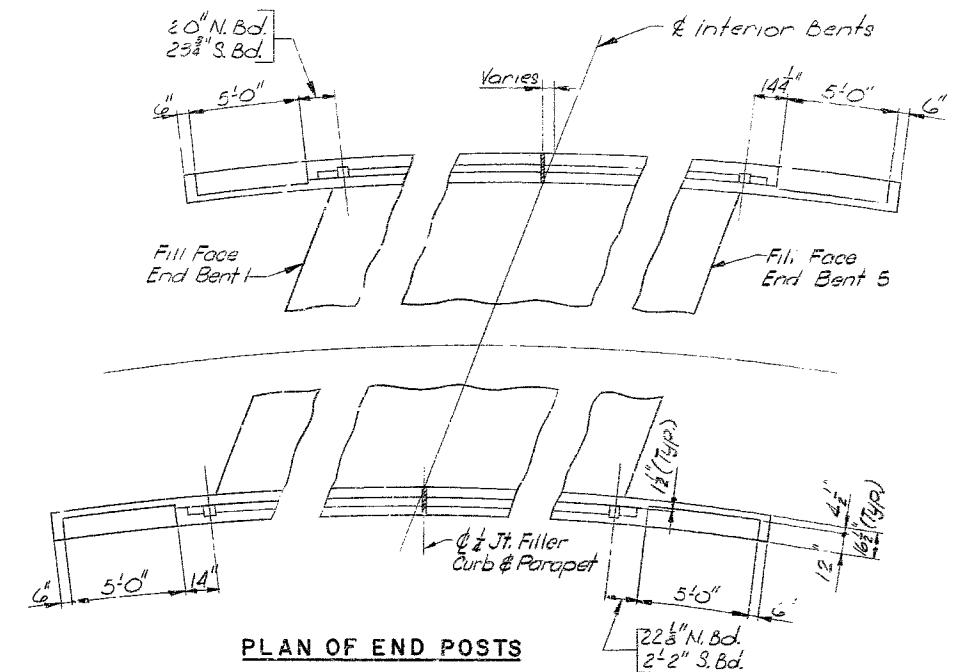
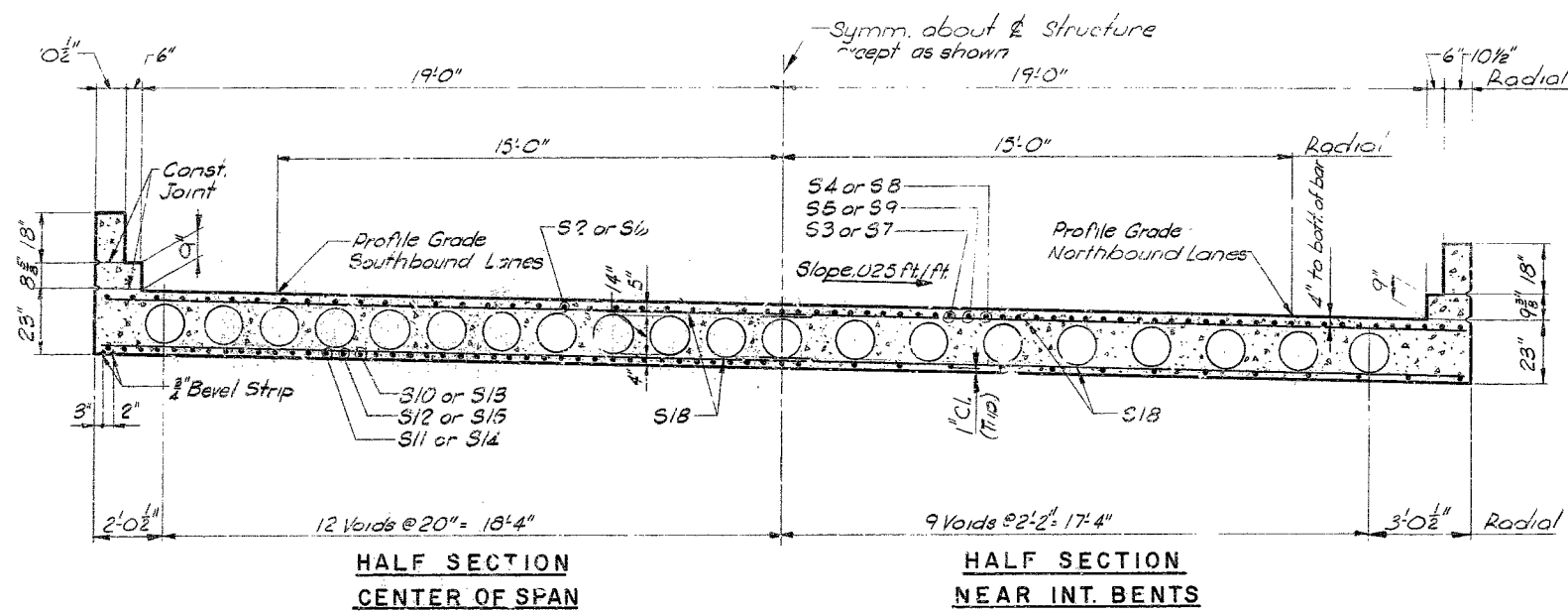
Rev. Feb. 3, 1970

Sheet No. 8 of 10

A-2282

MISSOURI STATE HIGHWAY DEPARTMENT

FED. ROAD DIST. NO.	STATE	FED. AID PROJ. NO.	FISCAL YEAR	SHEET NO.	TOTAL SHEETS
5	MO.		19	14	



NOTES:
 Plastic waterstop shall be placed in all parapet and curb filled joints, except on high side of super-elevated structures.
 Cost of plastic waterstop complete in place to be included in unit price bid for concrete.
 All longitudinal dimensions shown are measured along outside face of parapet.

LEFT CURB & PARAPET ELEVATION

BRIDGE OVER ROUTES D AND 71 B.P.
 STATE ROAD INTERSTATE ROUTE 29
 ABOUT 10 MILES NORTH OF PARKVILLE
 PROJECT NO. I-29-1(12)(RTE. I-29) STA. 424+06.36
 PLATT COUNTY

DETAILED OCT. 1967 BY HOHLT
 CHECKED OCT. 1967 BY R. PARIKH

R. W. BOOKER & ASSOCIATES, INC.
 CONSULTING ENGINEERS
 1139 OLIVE STREET
 ST. LOUIS, MISSOURI 63101

Note: This drawing is not to scale. Follow dimensions.

Sheet No. 9 of 10

A-2282

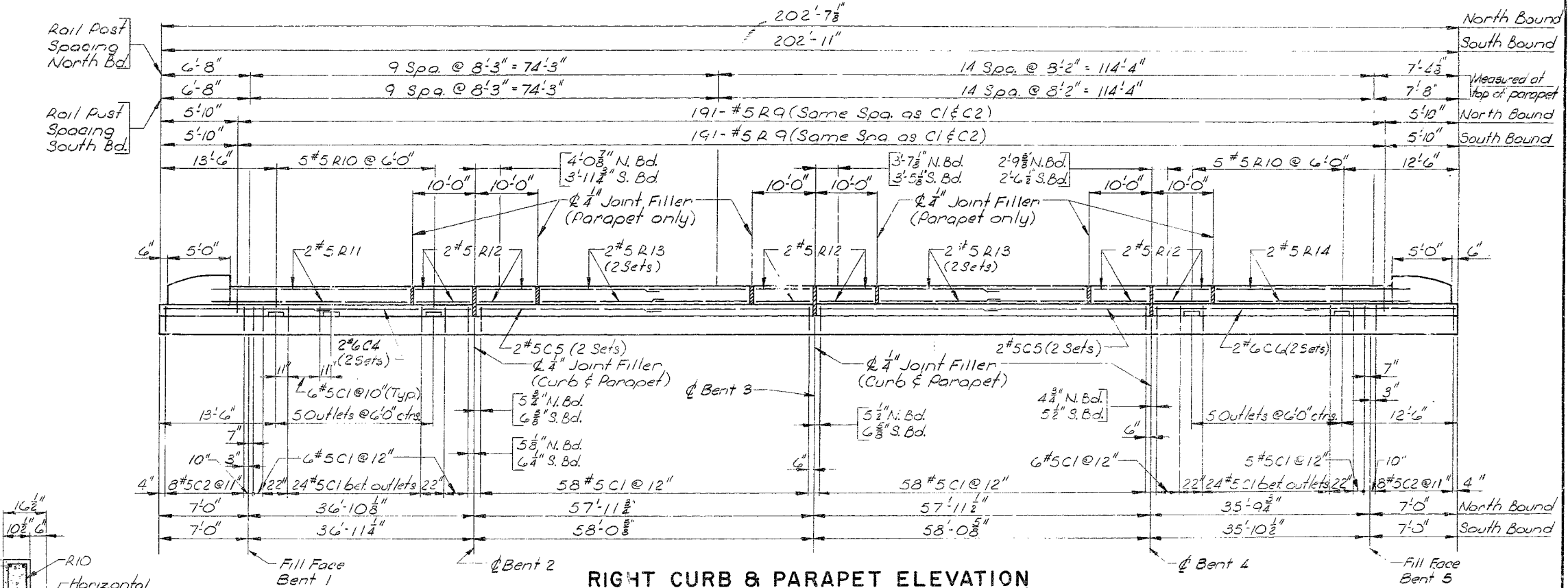
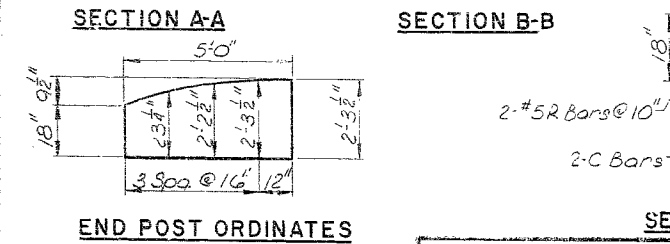
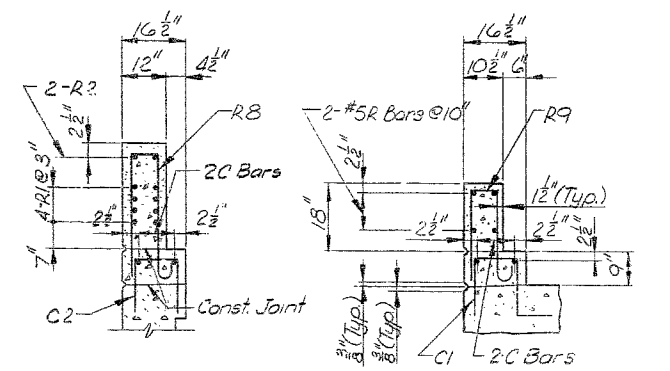
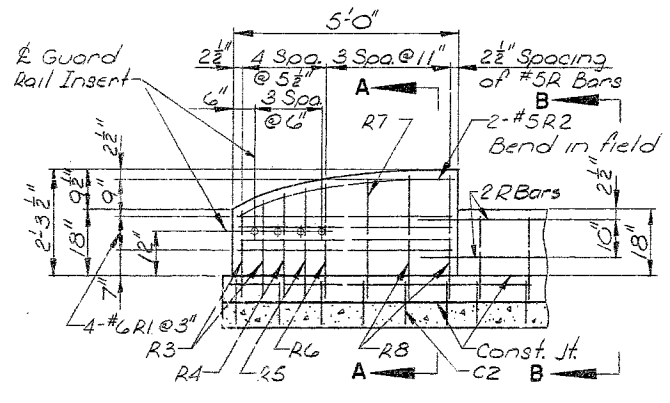
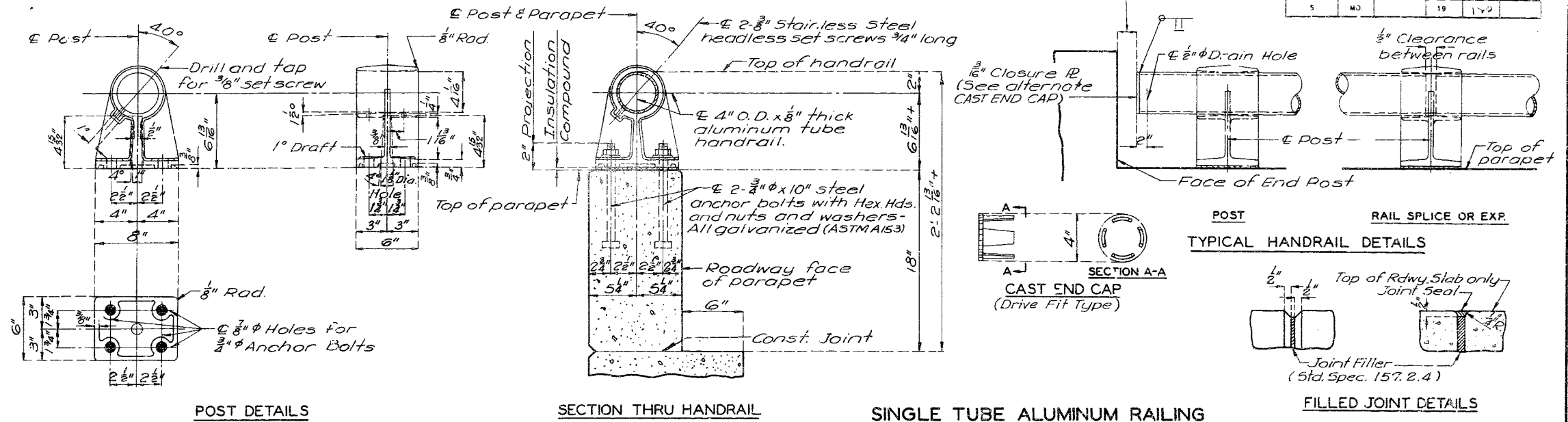
GENERAL HANDRAIL NOTES:

All handrail posts shall be set normal to grade.
 Aluminum tube handrail shall be bent to conform to vertical and horizontal alignment of parapet.
 Aluminum washer shims between top of parapet and post base may be used for adjusting handrail alignment. Maximum thickness of shims to be 1/8". Where more tilting of post is required for proper alignment, concrete bearing areas shall be ground down.
 All parts of handrail, except anchor bolts, nuts, washers, and set screws are to be of aluminum material.
 The contract unit price per linear foot of "Bridge Rail" shall include furnishing and erecting the handrail complete with anchor bolts, shims and insulating compound.
 All fillets 1/4" except as noted.
 All drafts 3° except as noted.
 Pipe rail to be fabricated in a minimum of 2 panel lengths.
 Omit set screw on side adjacent to filled joint in parapet and curb at all expansion posts.
 Top of curbs and parapets to be built parallel to grade with curb and parapet joints (except at end posts) normal to grade.
 Concrete end posts to be vertical.
 All exposed edges of end posts shall have 1/2" bevel.
 All exposed edges of curbs and parapets shall have 1/2" radius or 3/8" bevel unless otherwise noted.
 If the contractor desires, he may use drive fit cast aluminum end caps in lieu of welded aluminum closure plates.
 Integrally cast test coupons and a coat of clear lacquer specified in Std Spec 56 2.4 and 56 3.5 respectively will not be required for these rail posts.

MISSOURI STATE HIGHWAY DEPARTMENT

2" Min. except for Exp Gap in parapet use 3" @ 60° F.

FED. ROAD DIST. NO.	STATE	FED. AID PROJ. NO.	FISCAL YEAR	SHEET NO.	TOTAL SHEETS
5	MO.		19	170	



NOTE:
 Anchors for attaching guard rail shall be 3/4" threaded malleable iron (Galv.) inserts having a minimum depth of 3 1/2" and filled with a plastic closing plug. Cost for furnishing and installing the inserts and plugs will be included in price bid for other items.
 All longitudinal dimensions are measured along outside face and top of parapet.

BRIDGE OVER ROUTES D AND 71B.P.
 STATE ROAD INTERSTATE ROUTE 29
 ABOUT 10 MILES NORTH OF PARKSVILLE
 PROJECT NO. I-29-1(12) (RTE. I-29) STA. 424+06.36
 PLATTE COUNTY

Note: This drawing is not to scale. Follow dimensions.

Sheet No. 10 of 10.

A-2282

90

REVISED JAN. 1967
 MAR. 1964
 STD. 15.2
 DETAILED OCT. 1967 BY HOHLT
 CHECKED OCT. 1967 BY R. PARIKH

R W BOOKER & ASSOCIATES INC
 CONSULTING ENGINEERS
 1439 OLIVE STREET
 ST. LOUIS, MISSOURI 63101

MISSOURI STATE HIGHWAY DEPARTMENT

FED. ROAD DIST. NO.	STATE	FED. AID PROJ. NO.	FISCAL YEAR	SHEET NO.	TOTAL SHEETS
5	MO.		19	111	

GENERAL NOTES

DESIGN SPECIFICATIONS: A.P.S.H.O. - 1965

DESIGN LOADING:

HS 20-44; 15[#]/sq. ft. Future Wearing Surface; Modified 24,000[#] Tandem Axle; Earth 120[#]; Equivalent Fluid Pressure 30[#].

DESIGN UNIT STRESSES:

Class B Concrete (Substructure) $f_c = 1,200$ p.s.i.
Class B1 Concrete (Superstructure) $f_c = 1,600$ p.s.i.
Reinforcing Steel $f_s = 20,000$ p.s.i.
Steel Pile (A.S.T.M. A36-66) $f_b = 9,000$ p.s.i.

SURFACE SEAL:

Superstructure deck surface sealed.

QUANTITY NOTES:

All concrete and reinforcement above footings is included in superstructure quantities.

PILE NOTES:

Minimum energy requirement of hammer based on pile length and design bearing value of piles. Increases by the factor $(W+w)/2W$ when the weight of the ram (w) is less than the weight of the pile (W). All pile driven to practical refusal.

BORING DATA:

For Boring Data see Sheet No. 2 of 9. \odot Indicates location of boring.

ITEM	QUANTITIES		
	SUBSTR.	SUPERSTR.	TOTAL
10' Excavation for Structures	285	—	285
10" Steel Pile in Place	1679	—	1679
12" Steel Piles in Place	429	—	429
Class B Concrete	48.0	—	48.0
Class B1 Concrete	—	1103.6	1103.6
Reinforcing Steel	1300	272,720	274,020
Bridge Rail (Single Tube)	—	766	766
10" Steel Piles @ 50% Bid Price (cont)	130	—	130
12" Steel Piles @ 50% Bid Price (cont)	25	—	25

BENT NO.	PILE DATA									
	1		2		3		4		5	
LANE	N.B.D.	S.B.D.	N.B.D.	S.B.D.	N.B.D.	S.B.D.	N.B.D.	S.B.D.	N.B.D.	S.B.D.
Pile Type and Size	10B242	10B242	12B253	10B242	10B242	10B242	10B242	10B242	10B242	10B242
Number	5	5	3	3	3	3	3	3	5	5
Approximate Length Ft.	52	55	33	33	30	26	34	50	45	45
Design Bearing Tons	32	57	63	57	32	—	—	—	—	—
Hammer Energy Req'd Ft.Lbs.	7200	19,400	14,800	13,400	7200	—	—	—	—	—

BENCH MARK: B.M. 1[#] Bolt Head, Top of Curb, N. of End Post N.W. Cor Bridge, N.E.L., Elev. 1000.85

BRIDGE OVER ROUTES D AND 71.B.P.

STATE ROAD INTERSTATE ROUTE 29
ABOUT 10 MILES NORTH OF PARKSVILLE
PROJECT NO. I-29-112(RTE. I-29) STA. 424+06.36

PLATTE COUNTY

SUBMITTED BY:

E. J. Hall
REGISTERED PROFESSIONAL ENGINEER
MISSOURI NO. E-10795

SUBMITTED BY: *W. R. Amley*
BRIDGE ENGINEER

DATE Feb 13, 1968

APPROVED BY: *M. J. S. S. S.*
CHIEF ENGINEER

DATE Feb 13, 1968

STD. 54.00

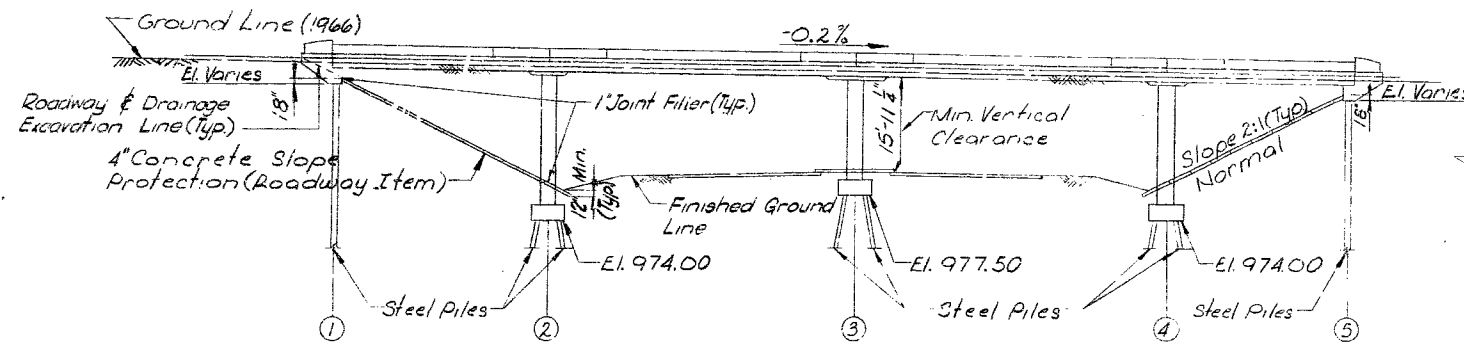
A-2282



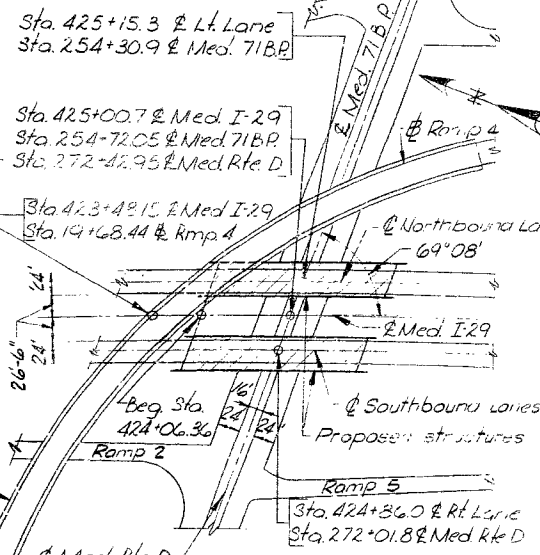
Sheet No. 1A of 1

FINAL PLANS

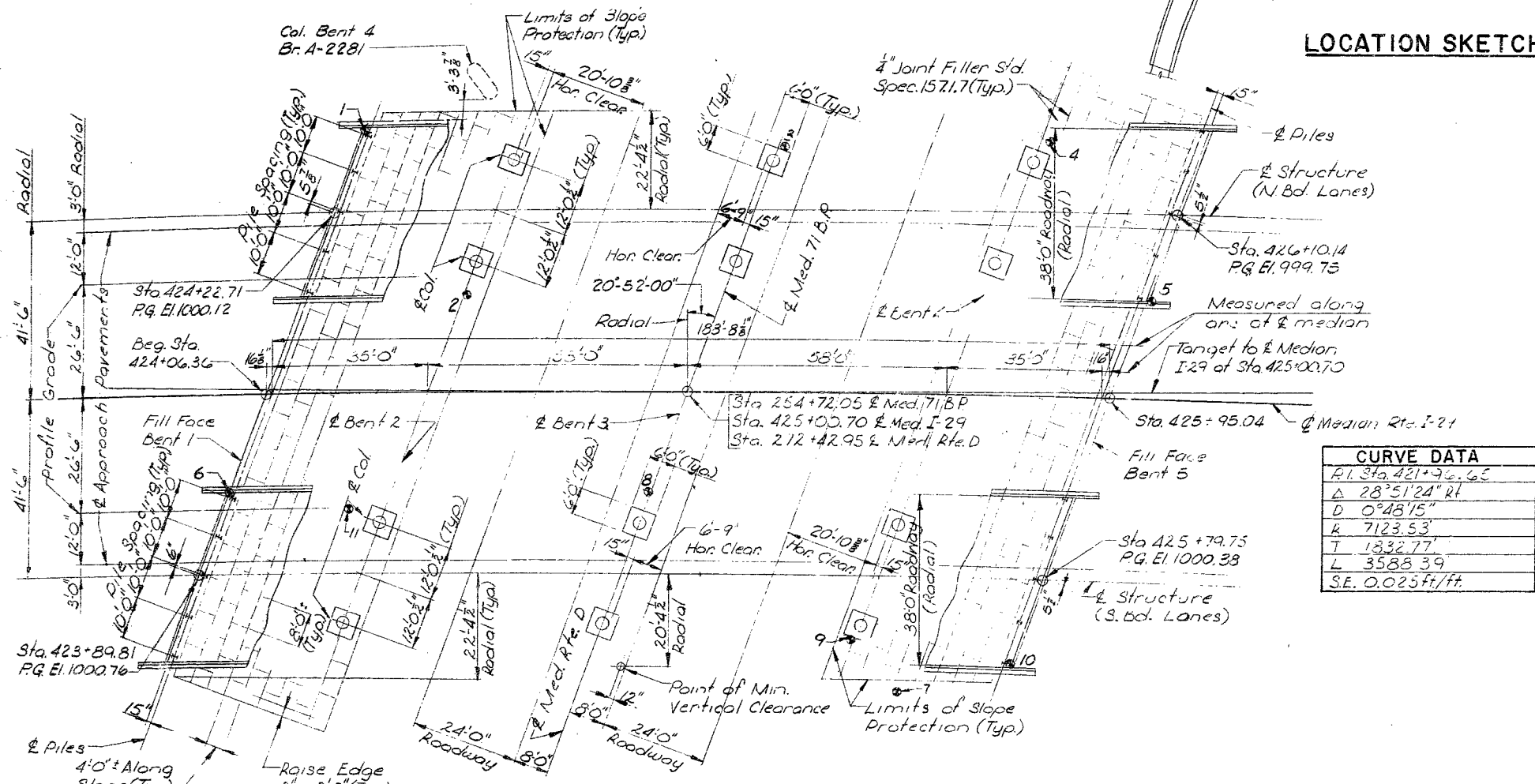
Twin (35.00'-58.00'-58.00'-35.00') Continuous Slab Spans (Voided)



GENERAL ELEVATION



LOCATION SKETCH



PLAN

CURVE DATA

R1	Sta. 421+96.65
Δ	28°51'24" Rt
D	0°48'15"
K	7123.53
T	1332.77'
L	3588.39'
S.E.	0.025 Ft./ft.

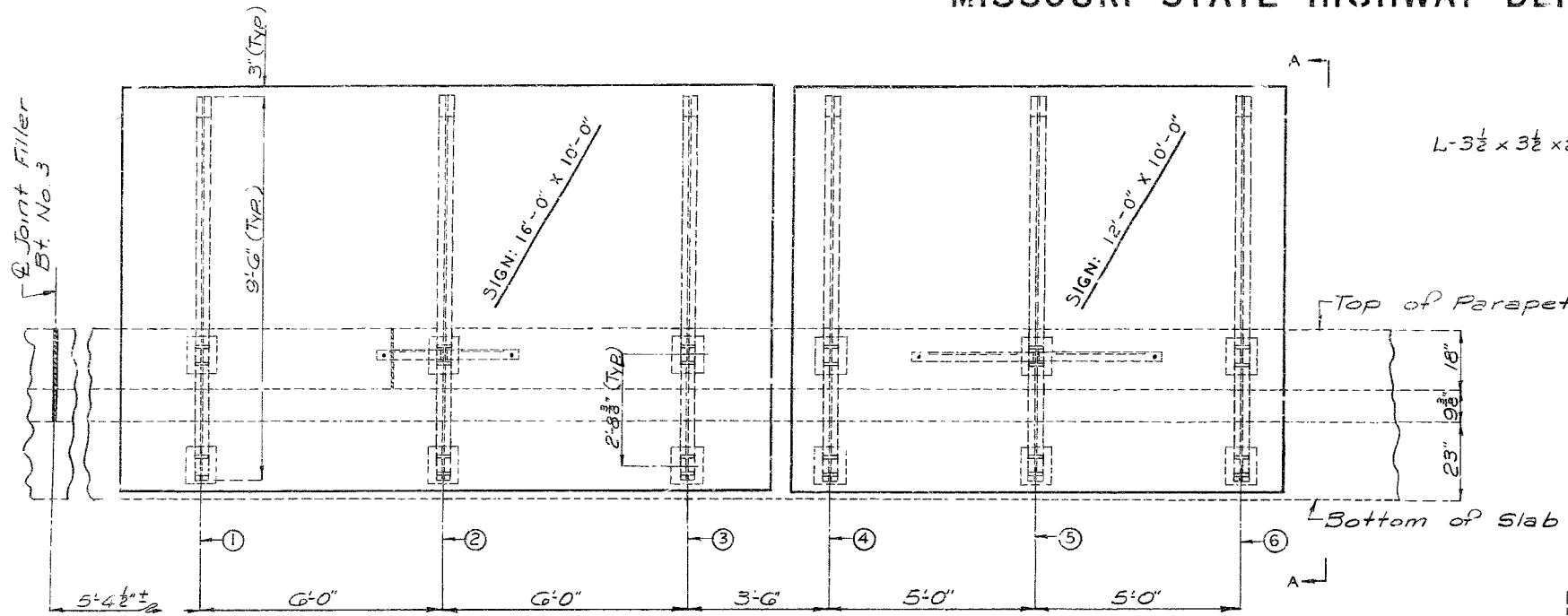
DESIGNED SEPT. 1967 BY J. PARIKH
DETAILED SEPT. 1967 BY HOHLT
CHECKED OCT. 1967 BY MALI

R. W. BOOKER & ASSOCIATES INC.
CONSULTING ENGINEERS
1139 OLIVE STREET
ST. LOUIS, MISSOURI 63001

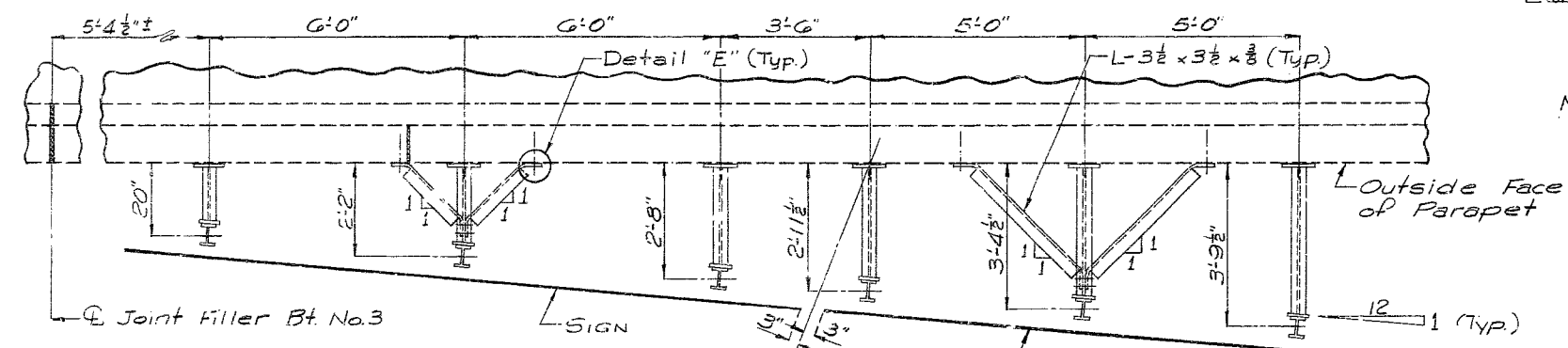
Note: This drawing is not to scale. Follow dimensions.

MISSOURI STATE HIGHWAY DEPARTMENT

FED. ROAD DIST. NO.	STATE	FED. AID PROJ. NO.	FISCAL YEAR	SHEET NO.	TOTAL SHEETS
5	MO.		19		

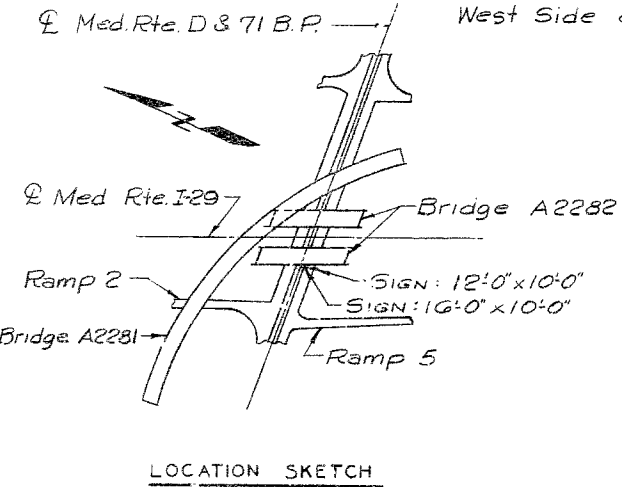


ELEVATION OF SIGN SUPPORTS
West Side of Bridge over Rte. D & 71 B.P.

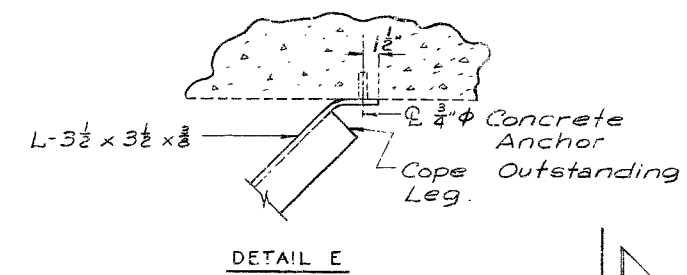


PLAN OF SIGN SUPPORTS

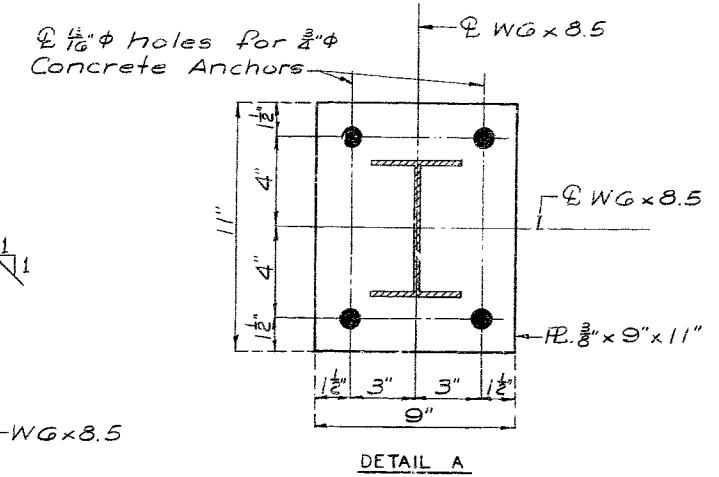
West Side of Bridge over Rte. D & 71 B.P.



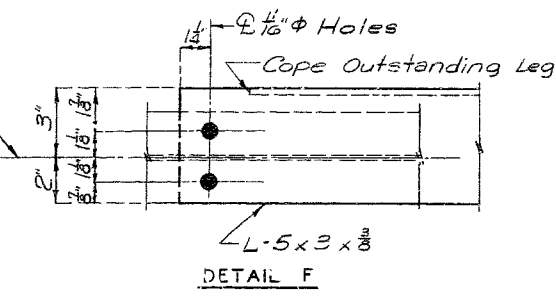
LOCATION SKETCH



DETAIL E

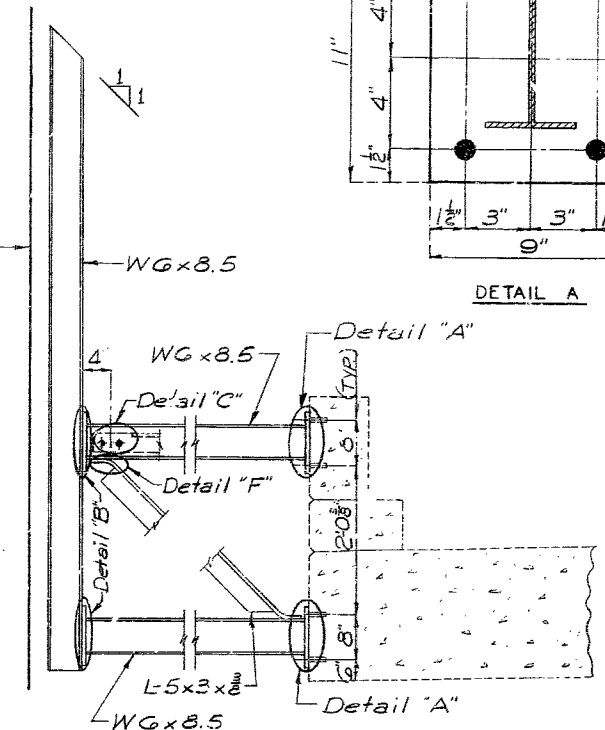


DETAIL A



DETAIL F

Note: Opposite hand near concrete



SECTION A-A

GENERAL NOTES

Design Specifications: A.A.S.H.O. 1973.
All Structural Steel shall be A.S.T.M. A36, Galvanized.
Field Connections, High Strength Bolts 5/8"φ, holes 1/16"φ, except as noted. All Bolts, Nuts and Washers shall be Galvanized. The turn-of-nut method of obtaining bolt tension for High Strength Bolts may be used (See Std. Spec. 712.11.2).
Concrete Anchors shall be the non-drilling expansion type, equal to Red Head (Phillips Drill Co.). The hole shall be pre-drilled to a depth of 3 1/2" with a conventional Carbide masonry bit.
The cost of furnishing and erecting the Sign Supports, including the Concrete Anchors in place, shall be paid for as Fabricated Sign Support Brackets, Lump Sum.

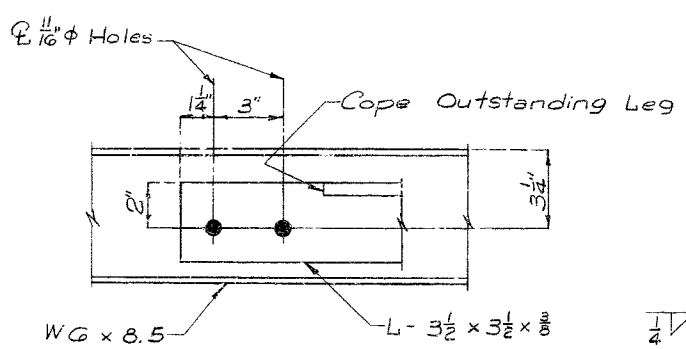
BRIDGE: OVER ROUTES D AND 71 B.P.

STATE ROAD: INTERSTATE ROUTE 29

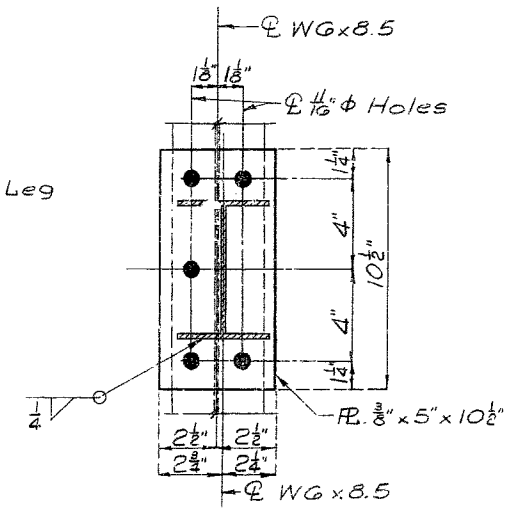
STA. 424 + 06.36

PLATTE COUNTY

DATE: Oct. 1, 1974



DETAIL C



DETAIL B

Note: This drawing is not to scale. Follow dimensions.

Sheet No. 1 of 1.

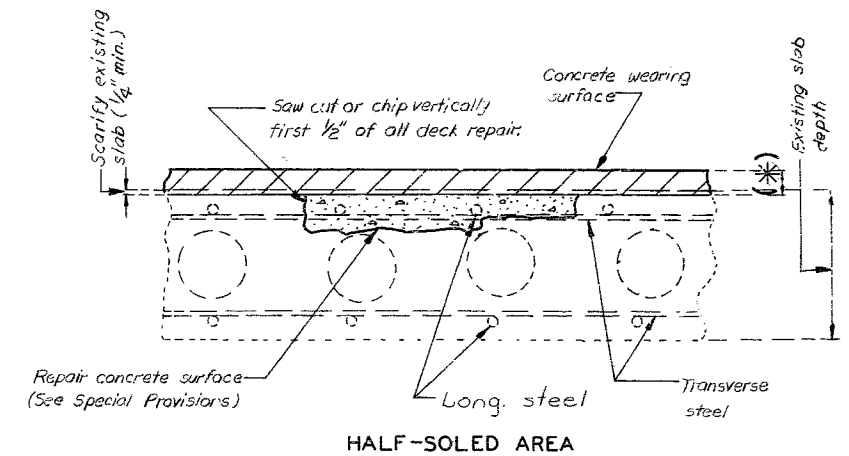
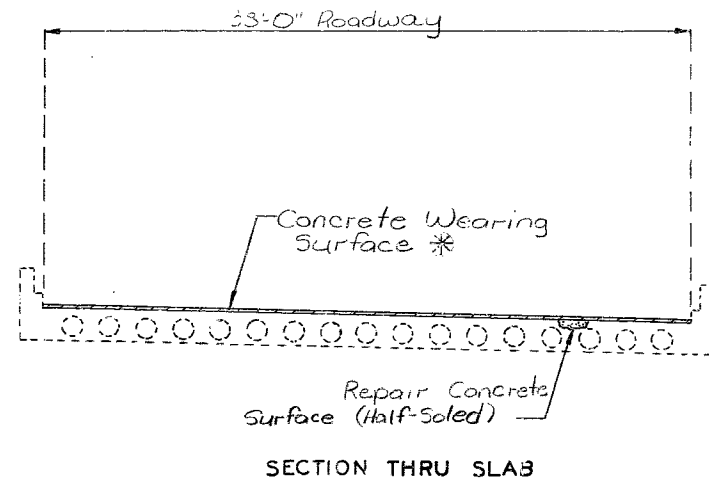
A-2282A

504

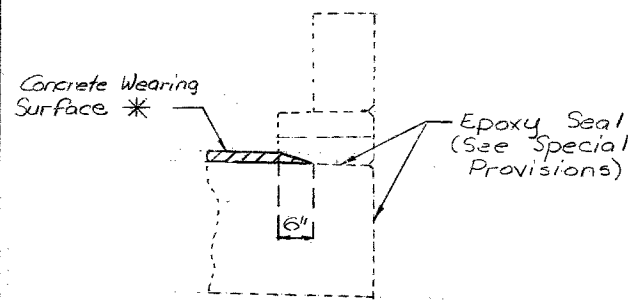
DETAILED SEPT. 1974
CHECKED SEPT. 1974

MISSOURI HIGHWAY AND TRANSPORTATION COMMISSION

STATE	PROJ. NO.	SHEET NO.
MO.		8
SEC./SUR 14&23 TWP 52N RGE 34W		



(* $1\frac{3}{4}$ " for latex modified concrete
 $2\frac{1}{4}$ " for low slump concrete



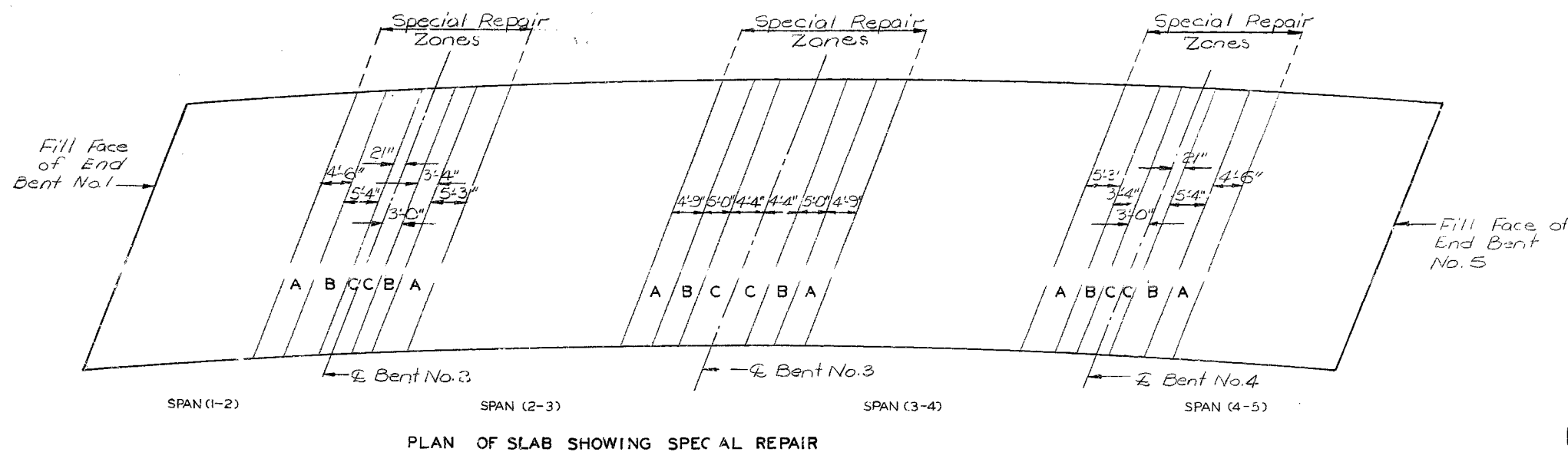
ESTIMATED QUANTITIES		
ITEM		TOTAL
Repairing Concrete Deck (Half-Soled)	Sq. Ft.	574
Concrete Wearing Surface * See Special Provisions ()	Sq. Yd.	159.3

NOTES:

Sequence for Repair; Zone A, Zone B, then Zone C.
 Zones at one bent with the same letter designation may be repaired at the same time.
 Any repair in the remainder of the bridge that is within 4'-0" of Zone A shall be completed before removing old concrete in Zone A.

* Alternate "A" = $1\frac{3}{4}$ " (Min.) Latex Modified Concrete
 Alternate "E" = $2\frac{1}{4}$ " (Min.) Low Slump Concrete

Details shown are for S.E. I-29, N.B. I-29 similar
 Outline of old work is indicated by light dashed lines. Heavy lines indicate new work.
 One lane of traffic over structure to be maintained during construction. (See Road Plans)



REPAIRS TO BRIDGE OVER ROUTES D AND 291

STATE ROAD INTERSTATE ROUTE 29

ABOUT 10 MILES NORTH OF PARKVILLE

PROJECT NO. IR-29-1(80) STA. 423+89.81± (S.B.) (E STRUCTURE)
 STA. 424+22.71± (N.B.) (E STRUCTURE)

JOB NO. 4-I029-137C

RT. I-29

PLATTE COUNTY

COUNTY

DATE December 17, 1984

STD.
STD.
A-2282R

DESIGNED Sept. 1984
 DETAILED Sept. 1984
 CHECKED Oct. 1984

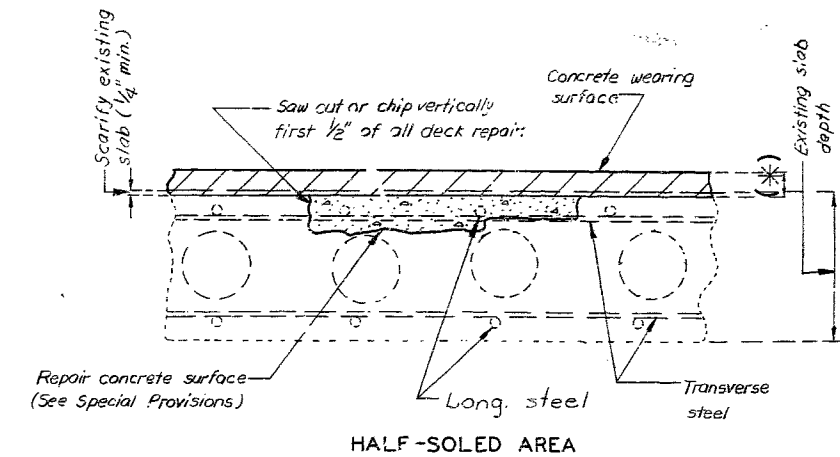
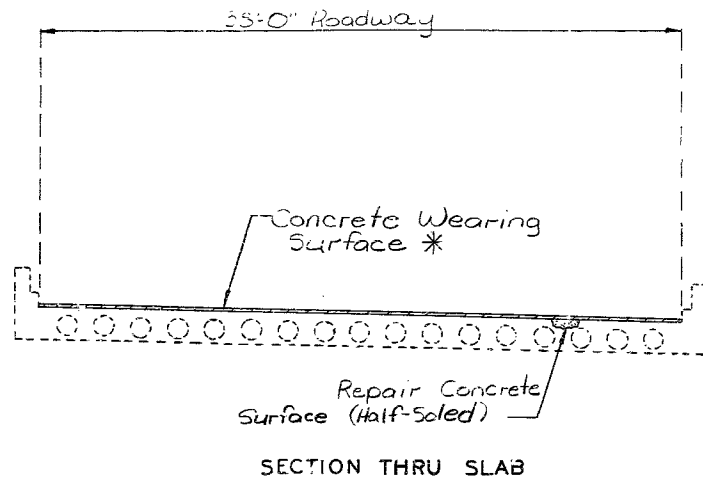
Note: This drawing is not to scale. Follow dimensions.

Sheet No. 1 of 1.

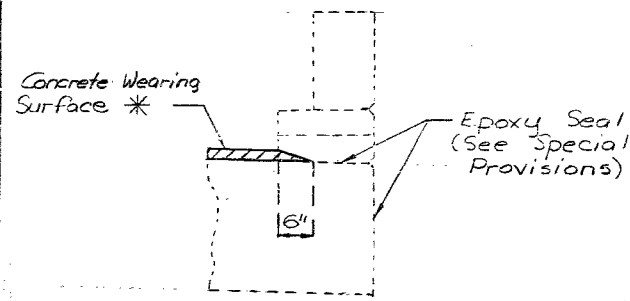
MISSOURI HIGHWAY AND TRANSPORTATION COMMISSION

FINAL PLAN

STATE	PROJ NO	SHEET NO
MO		8
SEC / SUR	148.23 TWP 52N RGE 34W	



(* 1 3/4" for later modified concrete
2 1/4" for low slump concrete



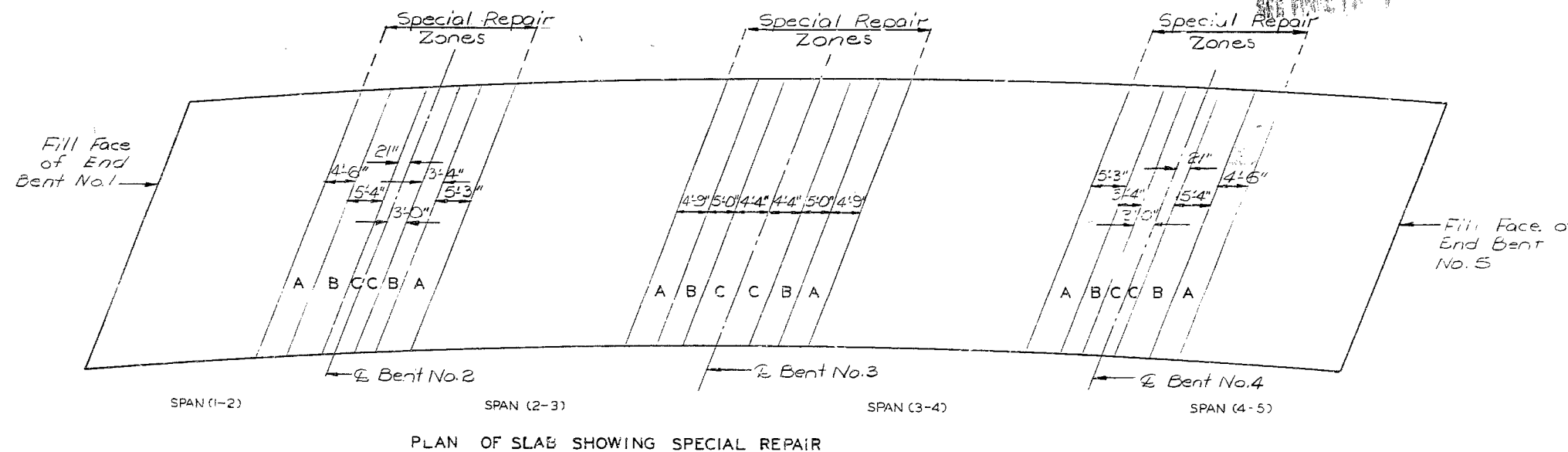
FINAL QUANTITIES		
ITEM		TOTAL
Repairing Concrete Deck (Half-Soled)	Sq. Ft.	123
Concrete Wearing Surface * See Special Provisions (Alt B)	Sq. Yd.	1595

NOTES:

Sequence for Repair; Zone A, Zone B then Zone C.
Zones at one bent with the same letter designation may be repaired at the same time.
Any repair in the remainder of the bridge that is within 4'-0" of Zone A shall be completed before removing old concrete in Zone A.

* Alternate "A" = 1 3/4" (Min) Later Modified Concrete
Alternate "B" = 2 1/4" (Min) Low Slump Concrete

Details shown are to: S.E. I-29, N.B. I-29 similar
Outline of old work is indicated by light dashed lines. Heavy lines indicate new work.
One lane of traffic over structure to be maintained during construction. (See Road Plans)



REPAIRS TO BRIDGE OVER ROUTES D AND 291

STATE ROAD INTERSTATE ROUTE 29
ABOUT 10 MILES NORTH OF PARKVILLE
PROJECT NO. IR-29-1(B) STA. 423+89.81± (S.B.) (C STRUCTURE)
STA. 424+22.71± (N.B.) (C STRUCTURE)
JOB NO. 4-I029-137C RTE. I-29
PLATTE COUNTY

STD.
STD.
A-2282R

DESIGNED Sept 1957
DETAILED Sept 1957
CHECKED Oct 1957

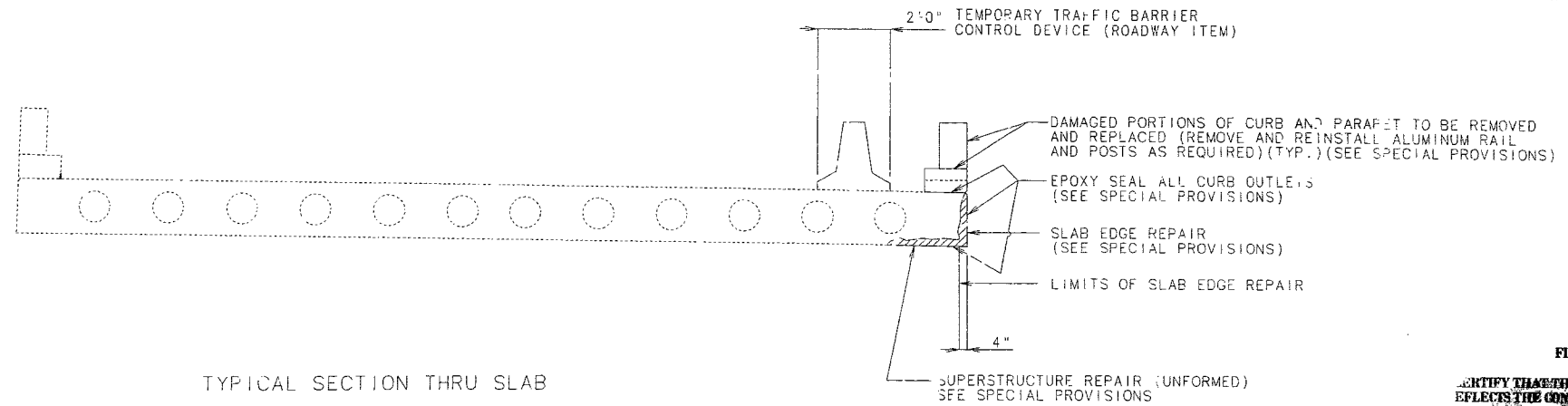
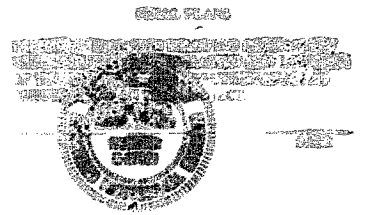
Note: This drawing is not to scale. Follow dimensions

Sheet No. A of

DATE December 17, 1957

MISSOURI HIGHWAY AND TRANSPORTATION COMMISSION

STATE	PRCJ. NO.	SHEET NO.
MO.	IM-IMB-89-1(96)	98
SEC./SUR. 14&23 TWP. 52N RGE. 34W		



TYPICAL SECTION THRU SLAB

FINAL PLANS

CERTIFY THAT THIS DRAWING ACCURATELY REFLECTS THE CONFIGURATION AND LOCATION OF THE ROADWAY AND APPURTENANCES AS INSTRUCTED ON THIS PROJECT.



GENERAL NOTES:

OUTLINE OF OLD WORK IS INDICATED BY LIGHT DASHED LINES. HEAVY LINES INDICATE NEW WORK.
 MAINTAIN TWO LANES OF TRAFFIC OVER STRUCTURE DURING CONSTRUCTION. (SEE ROAD PLANS)

DESIGN UNIT STRESSES:

CLASS B1 CONCRETE (SAFETY BARRIER CURB) f'c=4,000 PSI

FINAL QUANTITIES		
ITEM		TOTAL
CURB & PARAPET REPLACEMENT	LIN. FT.	11
SUPERSTRUCTURE REPAIR (UNFORMED)	SQ. FT.	109
SLAB EDGE REPAIR (BRIDGES)	LIN. FT.	129
MINORIAL REPAIR	LUMP SUM	1

REPAIRS TO:
 BRIDGE: OVER ROUTES D AND RTE. 291

STATE ROAD: INTERSTATE ROUTE 29
 ABOUT 4 MILES SE OF PLATTE CITY

PROJECT NO. STA. 424+06.36 MEDIAN
 JOB NO. J411016 RTE. 1-29 SBL

PLATTE COUNTY

STD.
STD.
A-2282R1

DESIGNED AUG. 1992
 DETAILED AUG. 1992
 CHECKED AUG. 1992

NOTE: THIS DRAWING IS NOT TO SCALE. FOLLOW DIMENSIONS.

SHEET NO. 1 OF 1

DATE

RTE 318