

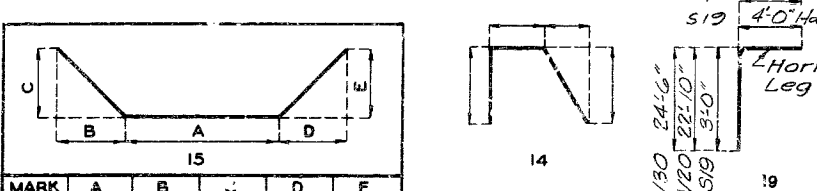
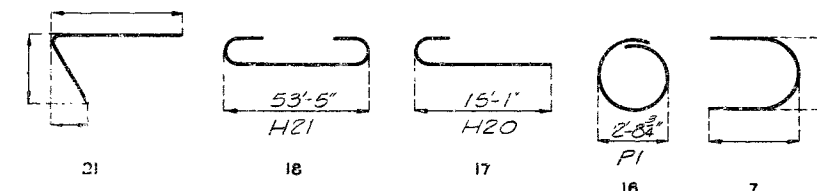
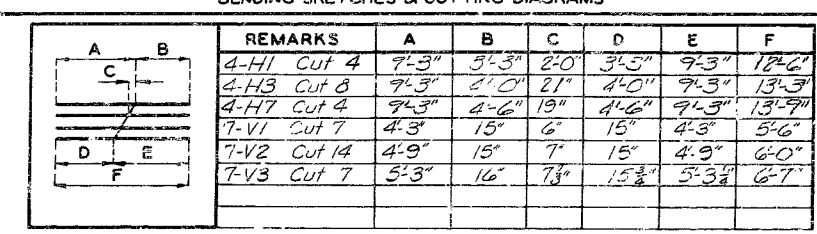


MISSOURI STATE HIGHWAY DEPARTMENT

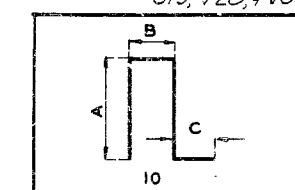
FED. ROAD DIST. NO.	STATE	FED. AID PROJ. NO.	FISCAL YEAR	SHEET NO.	TOTAL SHEETS
5	MO.		19	10	

COMPLETE BILL OF REINFORCING STEEL

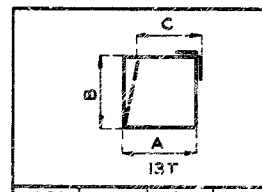
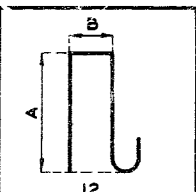
NO.	SIZE & MARK	LENGTH FT.-IN.	SHAPE	LOCATION	REMARKS	A	B	C	D	E	F
<b>SUPERSTRUCTURE</b>											
32	5-C1	5-2	10T	Curb	4-H1 Cut 4	7'-3"	3'-3"	2'-0"	3'-5"	9'-3"	12'-2"
4	6-C2	44-0			4-H3 Cut 8	7'-3"	2'-0"	21"	4'-0"	9'-3"	13'-3"
3	5-C3	35-9			4-H7 Cut 4	7'-3"	2'-6"	19"	4'-6"	9'-3"	13'-9"
4	6-C4	47-0			7-V1 Cut 7	4'-3"	15"	6"	15"	4'-3"	5'-6"
292	5-C5	5-2	10T		7-V2 Cut 14	4'-9"	15"	7"	15"	4'-9"	6'-0"
8	5-R1	4-9		End Post	7-V3 Cut 7	5'-3"	16"	7'-3"	15'-3"	5'-3"	6'-7"
4	5-R2	5-4									
4	5-R3	5-9									
4	5-R4	6-1									
4	5-R5	6-3									
4	5-R6	6-5									
4	5-R7	6-6									
4	5-R8	6-8									
8	5-R9	6-9									
16	5-R10	9-11	10T								
300	5-R11	5-1	12	Parapet							
16	5-R12	4-2	10T								
8	5-R13	30-0									
32	5-R14	9-3									
8	5-R15	49-9									
8	5-R16	31-6									
<b>Slab</b>											
342	5-S1	31-3									
342	5-S2	23-6									
70	5-S3	13-3									
42	11-S4	16-6									
84	11-S5	27-6									
84	11-S6	40-3									
70	5-S7	38-0									
42	11-S8	17-6									
70	5-S9	16-3									
84	7-S10	18-9									
42	6-S11	25-0									
42	6-S12	34-0									
42	10-S13	17-6									
42	10-S14	60-0									
42	11-S15	46-3									
42	11-S16	33-9									
42	7-S17	25-6									
42	7-S18	37-3									
<b>END BENT 1</b>											
4	6-H1	12-6		Wing							
4	6-H2	9-4									
4	6-H3	13-3									
8	6-H4	53-3		Beam							
4	6-H5	31-6		Slab							
4	6-H6	23-6									
70	6-S19	7-0	19	Beam & Slab							
2	6-T1	11-4	15	Wing							
2	6-T2	11-7									
34	5-U1	8-10	10T	Beam							
7	4-V1	5-6		Wing							
7	4-V2	6-0									
2	4-V4	4-6									
2	4-V5	5-1									



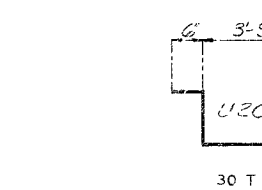
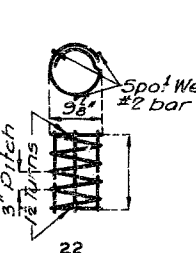
MARK	A	B	C	D	E
T1	7'-11"	7'-8"	14'-4"	2'-0"	12'-4"
T2	8'-2"	23'-4"	13'-8"	7'-8"	12'-1"
T3	8'-6"	8'-3"	13'-8"	22'-8"	14'-3"



MARK	A	B	C
C1	2'-1 1/2"	13 1/2"	
R10	4'-9"	7 3/4"	
R12	19 1/2"	8 1/2"	
U1	3'-4 1/2"	2'-3 3/4"	
D4	3'-9 1/2"	7'-3"	
C5	2'-1 1/2"	13 1/2"	



MARK	A	B
R2	2'-1 1/2"	9"
R3	2'-4 1/2"	9"
R4	2'-6 1/2"	9"
R5	2'-7 1/2"	9"
R6	2'-8"	9"
R7		
R8	2'-9 1/2"	9"
R9	2'-9 3/4"	9"
R11	2'-0 3/4"	8 1/2"

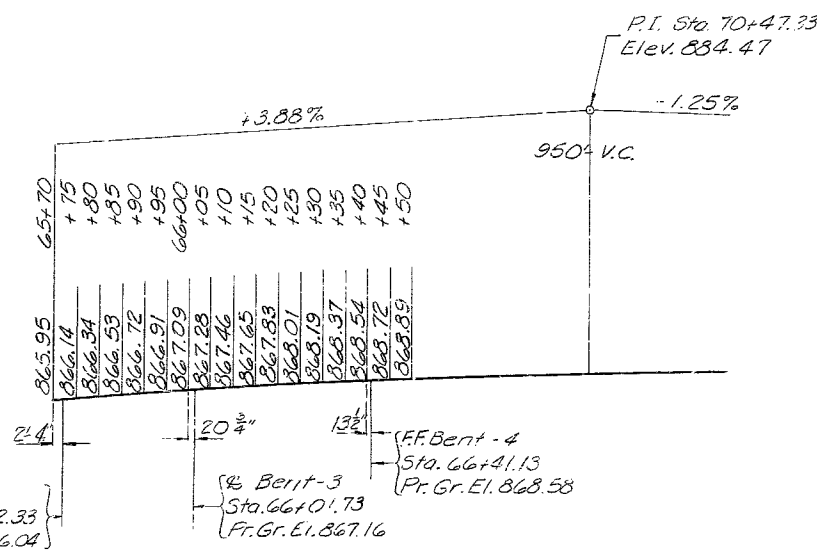


Note: All bending dimensions are out to out.  
Total lengths are measured along centerline bar to the nearest inch.

Note: This drawing is not to scale. Follow dimensions.

NO.	SIZE & MARK	LENGTH FT.-IN.	SHAPE	LOCATION
<b>INT. BENT 2</b>				
24	10-D1	5-3		Footing
12	9-D2	8-0		"
18	5-D3	5-9		"
6	9-D4	14-3	10	"
4	10-H20	16-2	17	Beam
9	10-H21	55-7	18	"
11	10-H22	23-3		"
11	10-H23	32-9		"
66	3-P1	9-4	16	Column
126	5-U20	8-8	30T	Beam
24	10-V20	24-8	19	Column
<b>INT. BENT 3</b>				
24	10-D1	5-3		Footing
12	9-D2	8-0		"
18	5-D3	5-9		"
6	9-D4	14-3	10	"
4	10-H20	16-2	17	Beam
9	10-H21	55-7	18	"
11	10-H22	23-3		"
11	10-H23	32-9		"
69	3-P1	9-4	16	Column
126	5-U20	8-8	30T	Beam
24	10-V30	26-4	19	Column
<b>END BENT 4</b>				
4	6-H2	9-4		Wing
4	6-H3	13-3		"
8	6-H4	53-3		Beam
4	6-H5	31-6		Slab
4	6-H6	23-6		"
4	6-H7	13-9		Wing
70	6-S19	7-0	19	Beam & Slab
2	6-T2	11-7	15	Wing
2	6-T3	11-11		"
94	5-U1	8-10	10T	Beam
7	4-V2	6-0		Wing
7	4-V3	6-7		"
2	4-V4	4-6		"
2	4-V5	5-1		"

Note: Hooks and bends shall be in accordance with the CRSI Manual of Standard Practice for detailing reinforced concrete structures.  
The letter T after the shape number, in bending sketches, indicates bars that are to be bent according to CRSI stirrup and tie dimensions.



PROFILE GRADE ELEVATIONS

Note: Profile grade elevations shown are taken at top of wearing surface.

296

STD. 90.3A  
APRIL 1969  
REVISED  
MAY 1969

DETAILED AUG. 1969 BY R.W.H.  
CHECKED SEPT. 1969 BY T.R.B.

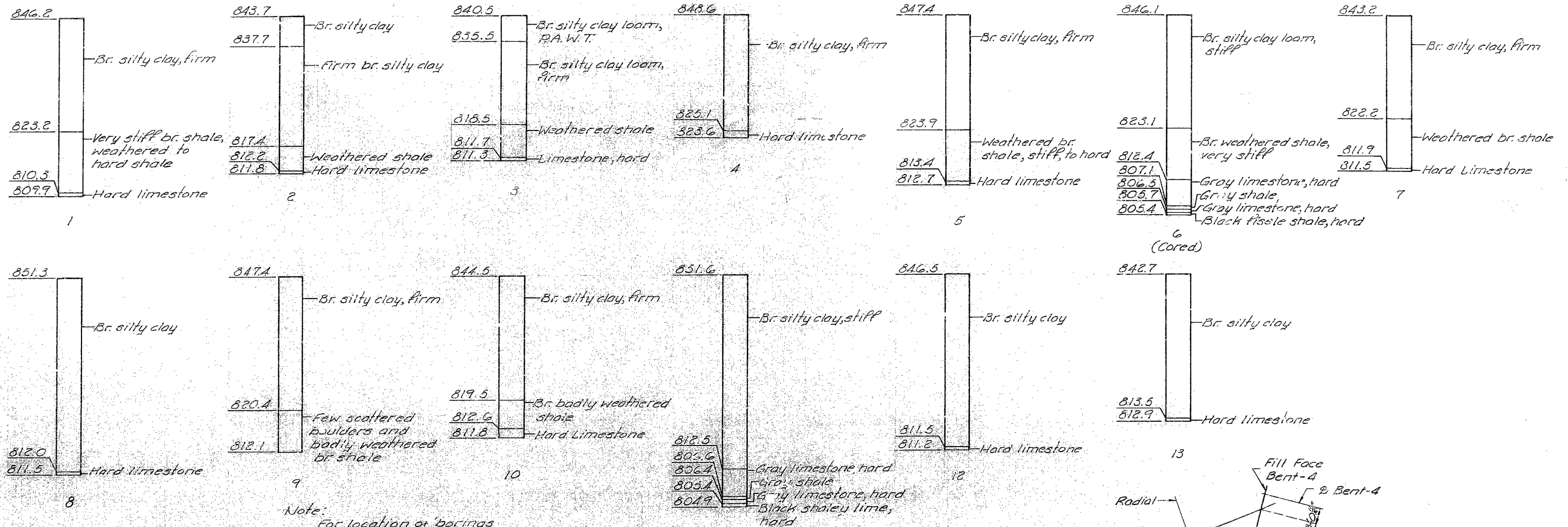
PLATTE COUNTY

A-2484

Sheet No. 2 of 9

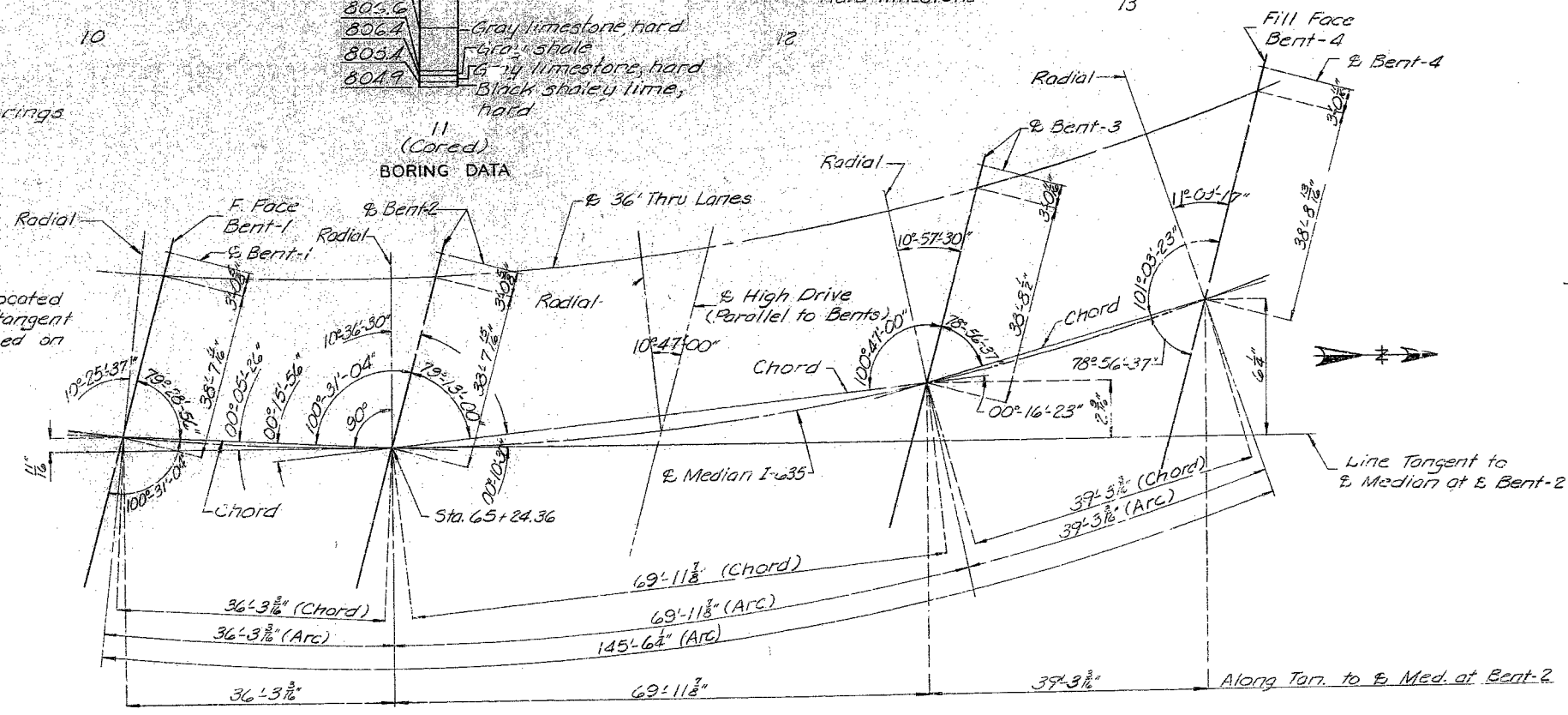
MISSOURI STATE HIGHWAY DEPARTMENT

FED. ROAD DIST. NO.	STATE	FED. AID PROJ. NO.	FISCAL YEAR	SHE. NO.	TOTAL SHEETS
5	MO.		19	15	



Note: For location of borings see sheet 1 of 9.

Note: Bents cannot be accurately located from the reference point on the tangent by conventional survey methods based on 100' chords. All bents are parallel.



I-635 Curve Data  
 PI=69+70.3  
 Δ=6° 33' Lt  
 D=0° 30'  
 T=655.9'  
 L=1310.4'  
 R=11459.16'  
 SE=0

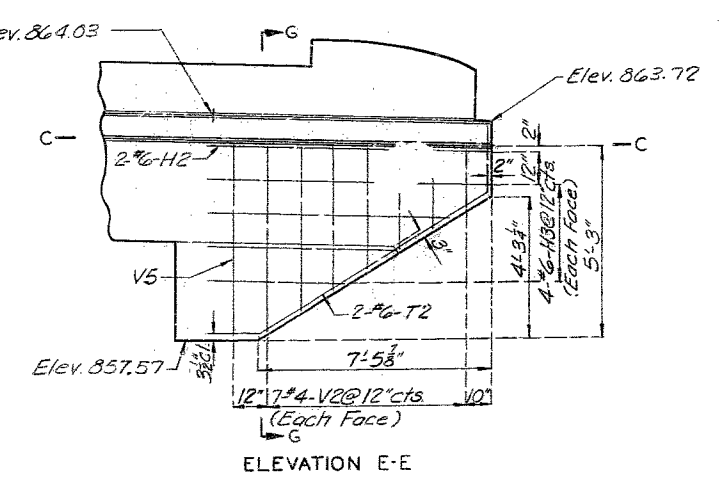
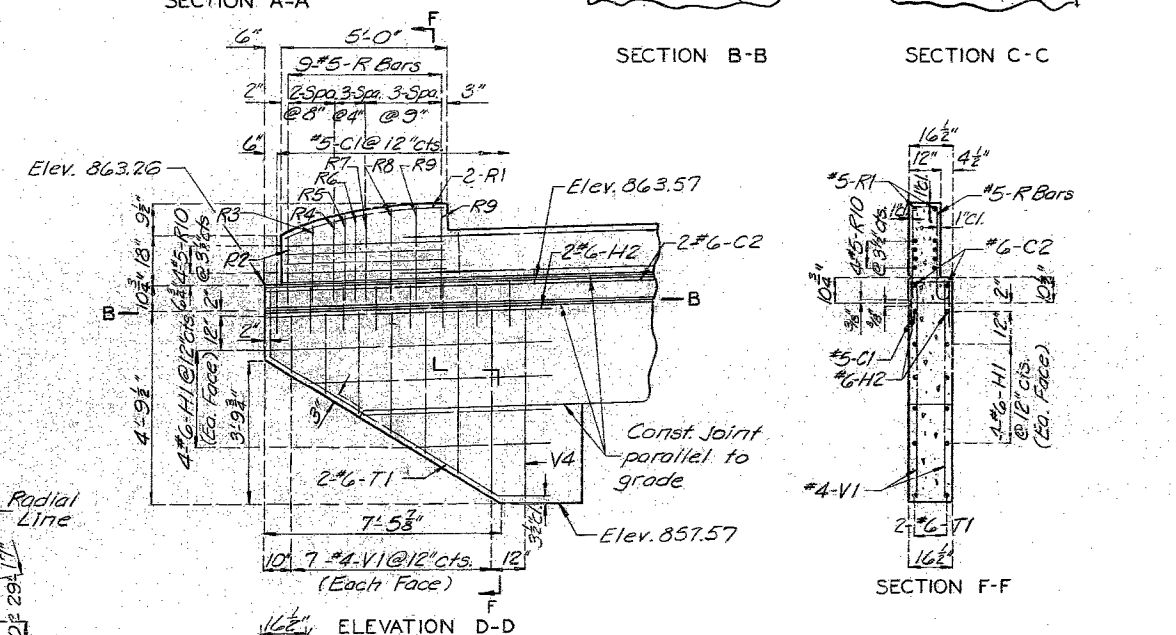
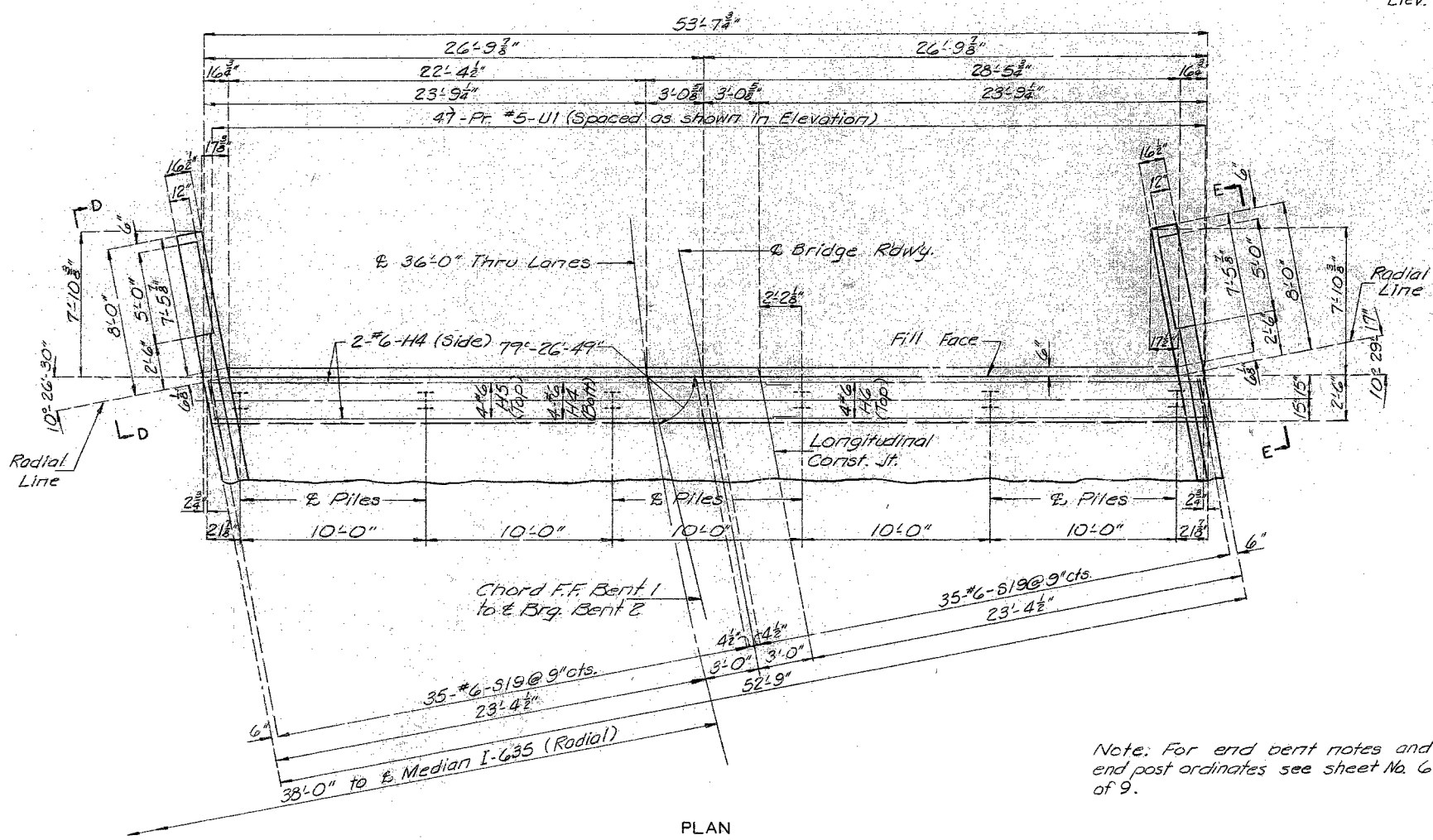
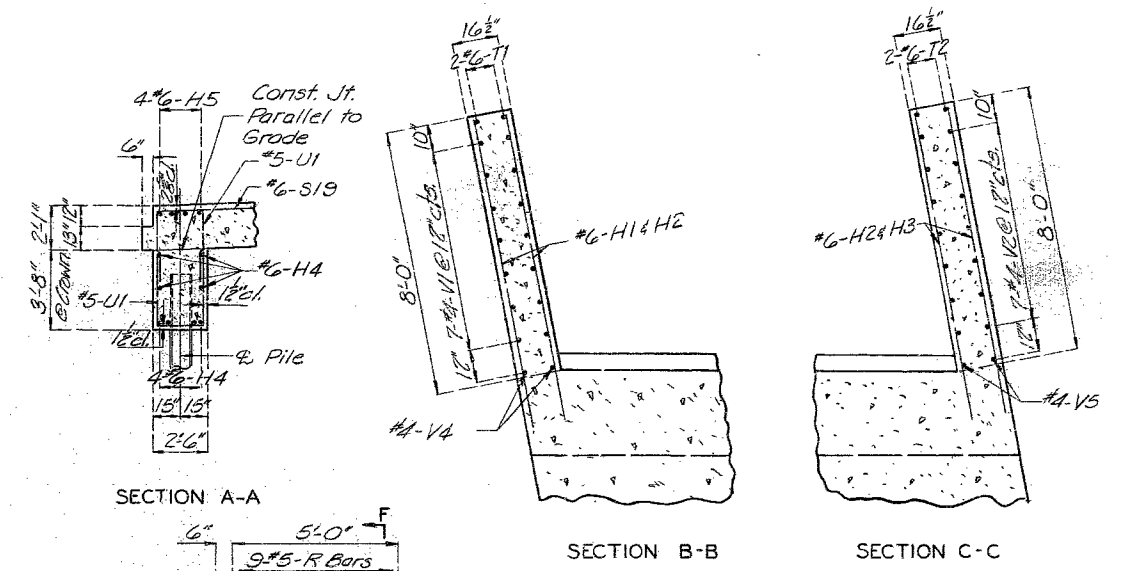
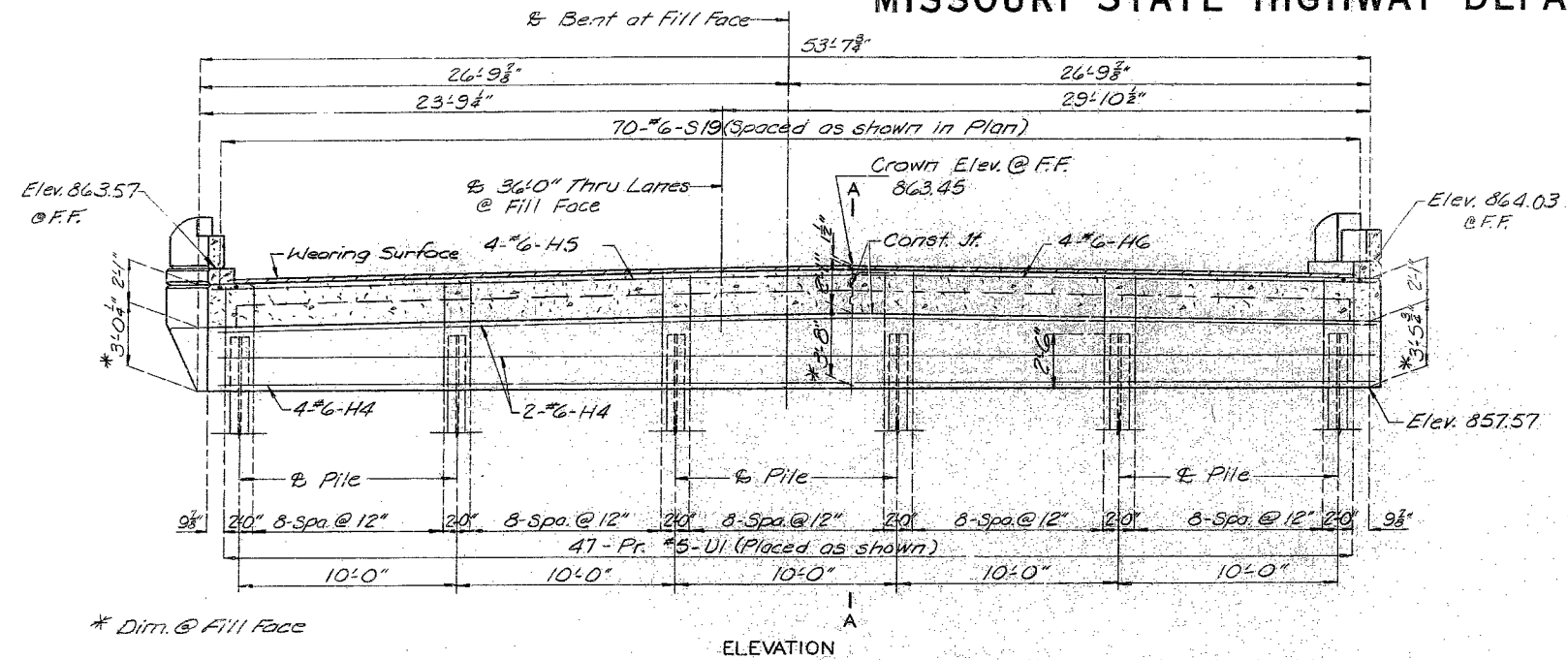
SUBSTRUCTURE LAYOUT

PLATTE COUNTY

297

MISSOURI STATE HIGHWAY DEPARTMENT

FED. ROAD DIST. NO.	STATE	FED. AID PROJ. NO.	FISCAL YEAR	SHEET NO.	TOTAL SHEETS
5	MO.		19	16	



298

PLAN  
DETAILS OF END BENT NO. 1

Note: For end bent notes and end post ordinates see sheet No. 6 of 9.

Note: This drawing is not to scale. Follow dimensions.

Sheet No. 4 of 9

PLATTE COUNTY

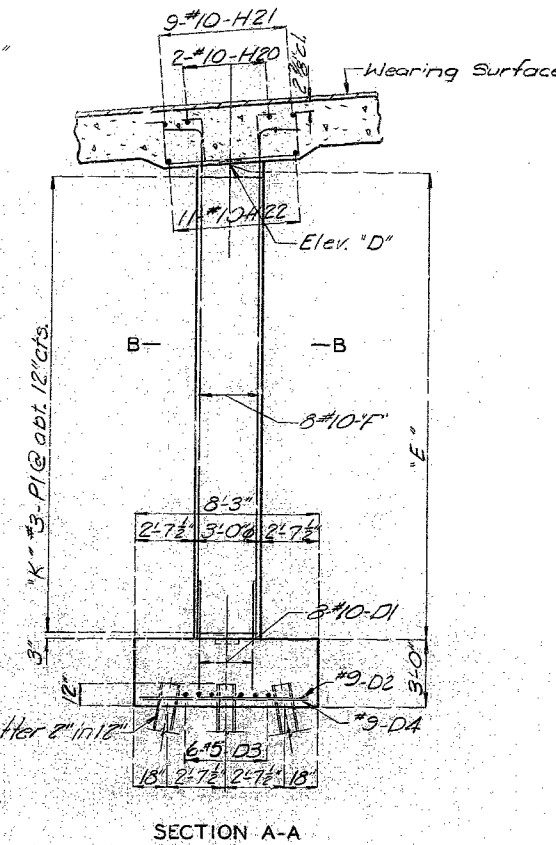
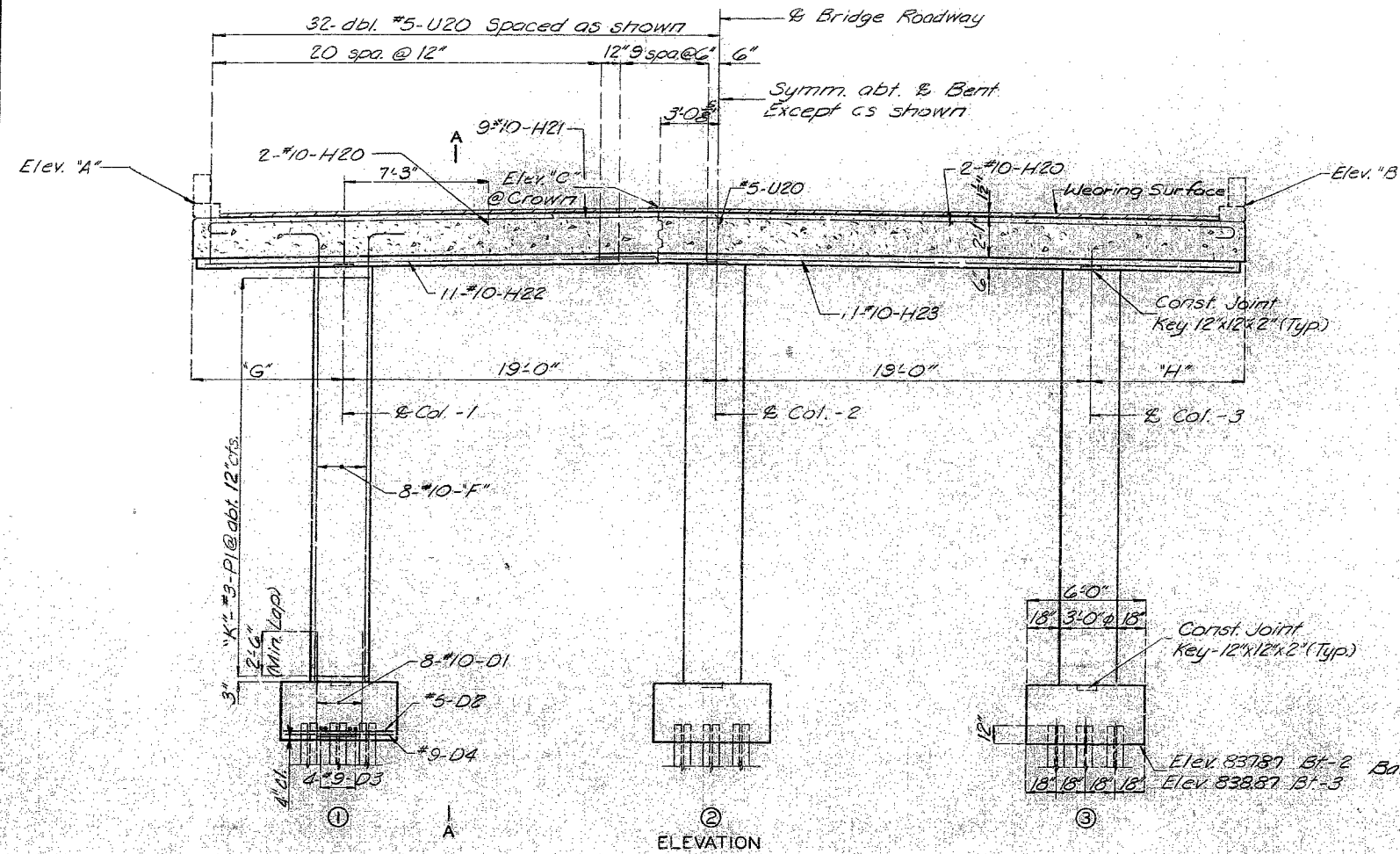
A-2484

DETAILED AUG 1963 BY P.W.H.  
CHECKED SEPT. 1963 BY E.A.H.

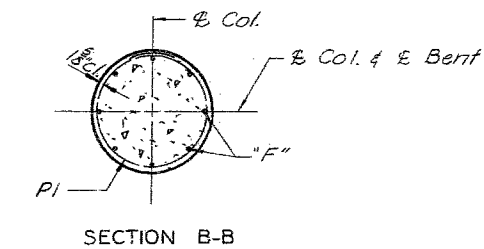
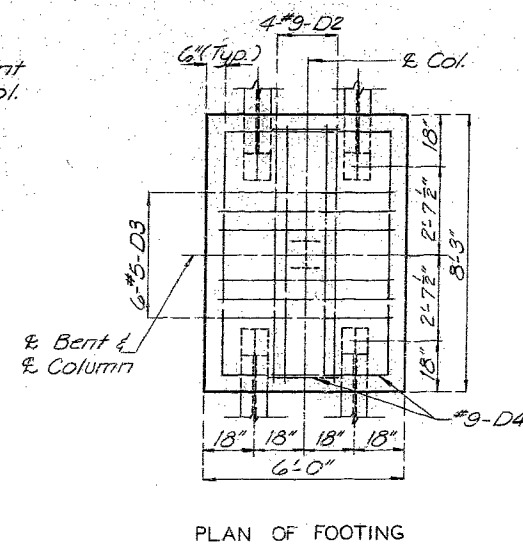
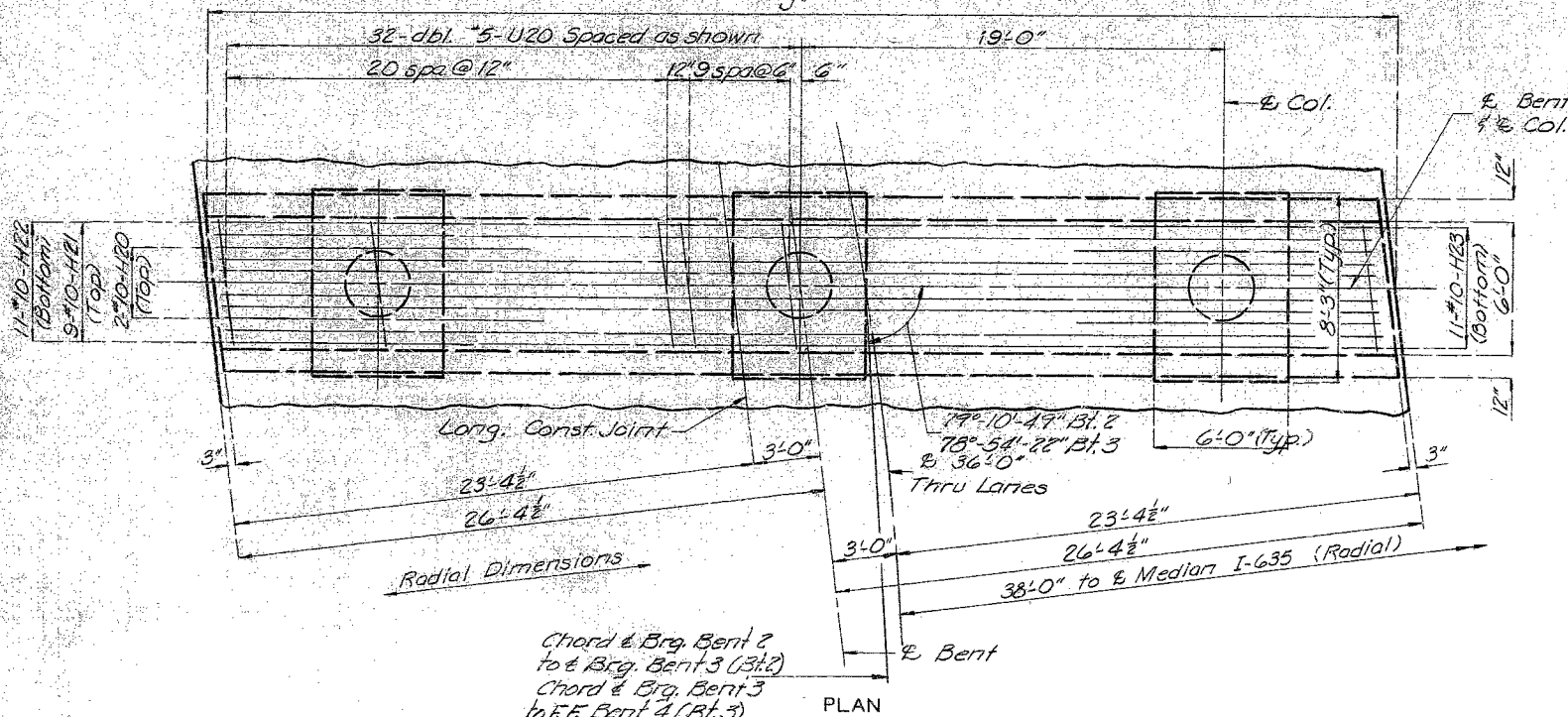


MISSOURI STATE HIGHWAY DEPARTMENT

FED. ROAD DIST. NO.	STATE	FED. AID PROJ. NO.	FISCAL YEAR	SHEET NO.	TOTAL SHEETS
5	MO.		19	17	



BENT COLUMN	2			3		
	①	②	③	①	②	③
Elev. "A"	865.44			868.14		
Elev. "B"	864.98			867.69		
Elev. "C"	864.86			867.56		
Elev. "D"	861.97	862.10	861.76	864.70	864.79	864.48
"E"	21'-1 1/2"	21'-2 3/8"	20'-10 1/8"	22'-10"	22'-11"	22'-7 1/8"
"F"	V22	V20	V20	V30	V30	V30
"G"	7'-10 1/8"			7'-10 1/8"		
"H"	7'-10"			7'-10"		
"J"	53'-8 1/8"			53'-8 1/8"		
"K"	22	22	22	23	23	23



Chord & Brg. Bent 2 to & Brg. Bent 3 (Bt. 2)  
Chord & Brg. Bent 3 to F.F. Bent 4 (Bt. 3)

Note: This drawing is not to scale. Follow dimensions.

DETAILS OF INTERMEDIATE BENTS 2 & 3

Sheet No. 5 of 9

PLATTE COUNTY

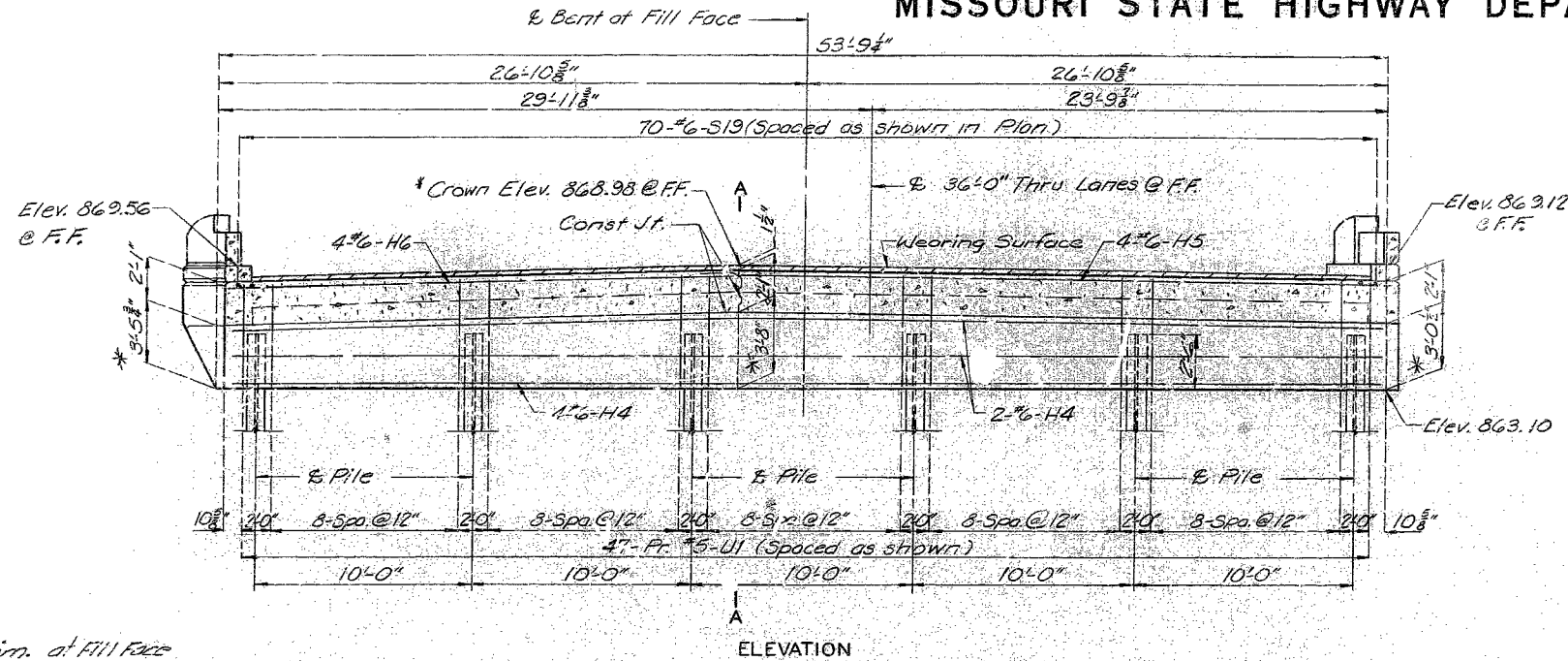
A-2484

299

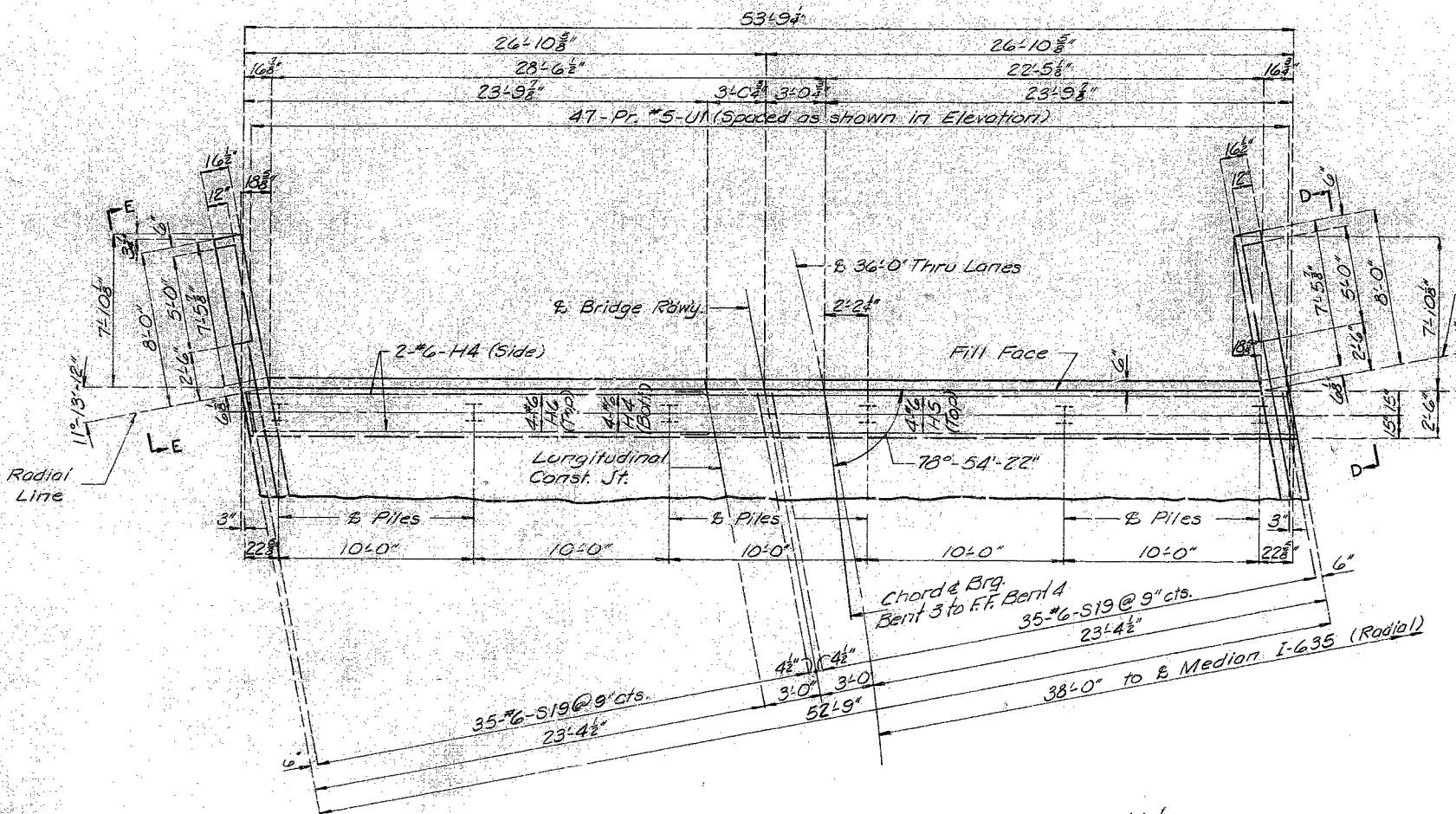
DETAILED AUG 1969 BY P.W.H.  
CHECKED SEPT. 1969 BY E.A.H.

MISSOURI STATE HIGHWAY DEPARTMENT

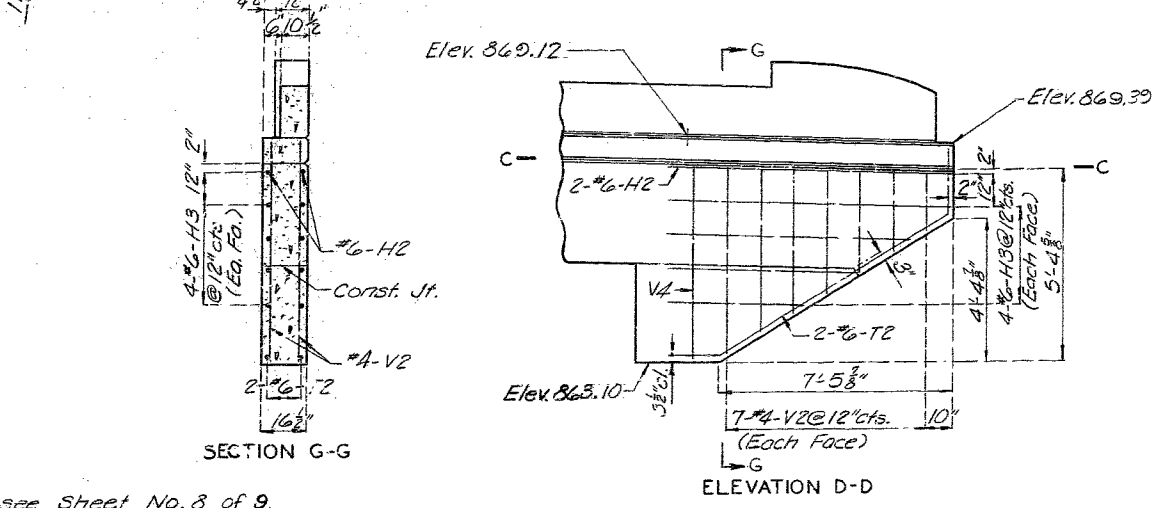
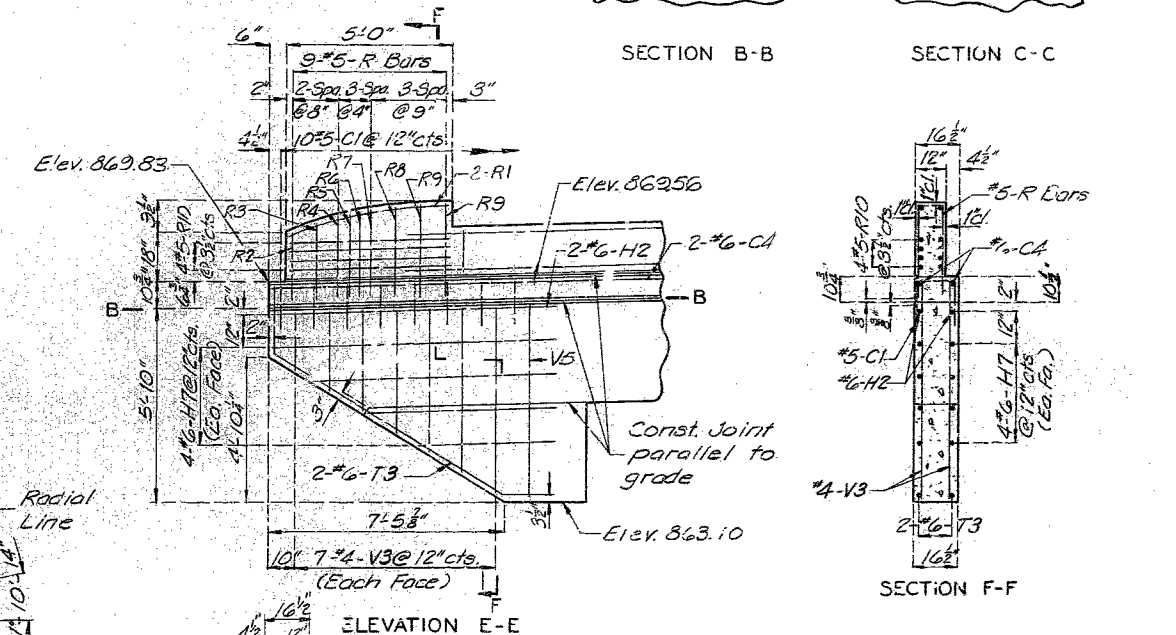
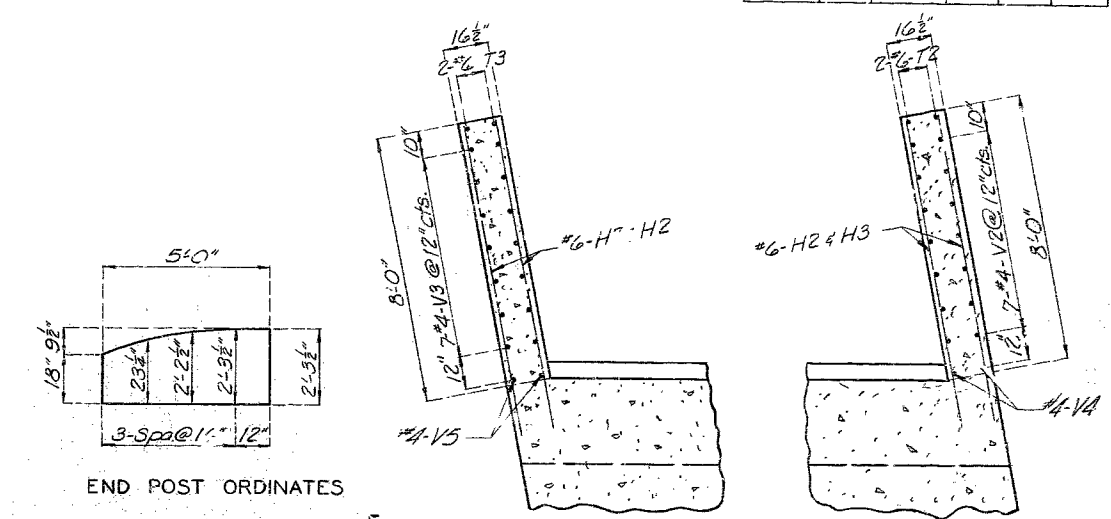
FED. ROAD DIST. NO.	STATE	FED. PROJ. NO.	FISCAL YEAR	SHEET NO.	TOTAL SHEETS
5	MO.		19	18	



\* Dim. at Fill Face



DETAILS OF END BENT NO. 4



Note:  
 For Timber Header Detail see Sheet No. 8 of 9.  
 For Curb and Parapet details see Sheet No. 9 of 9.  
 For Section A-A see Sheet No. 4 of 9.

Note: This drawing is not to scale. Follow dimensions.

Sheet No. 6 of 9.

PLATTE COUNTY

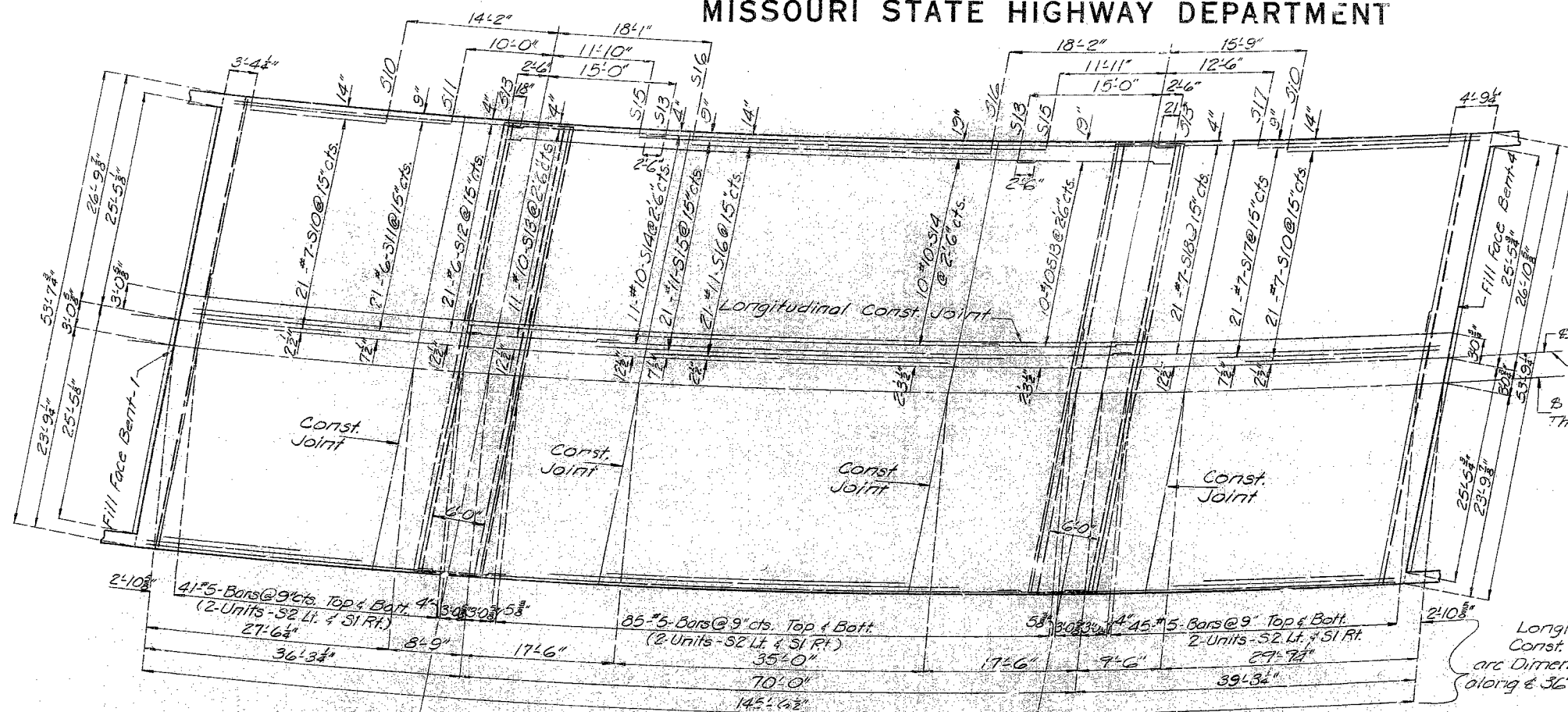
A-2484

300

DETAILED AUG 1949 BY P.W.H.  
 CHECKED SEPT. 1949 BY E.A.H.

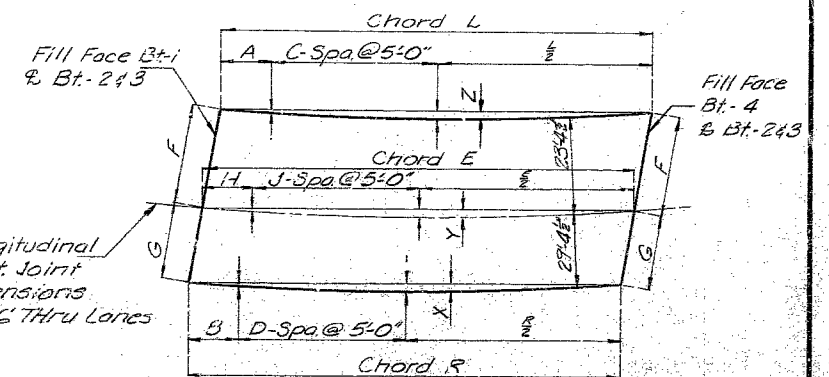
MISSOURI STATE HIGHWAY DEPARTMENT

FED. ROAD DIST. NO.	STATE	FED. AID PROJ. NO.	FISCAL YEAR	SHEET NO.	TOTAL SHEETS
5	MO.		19	19	



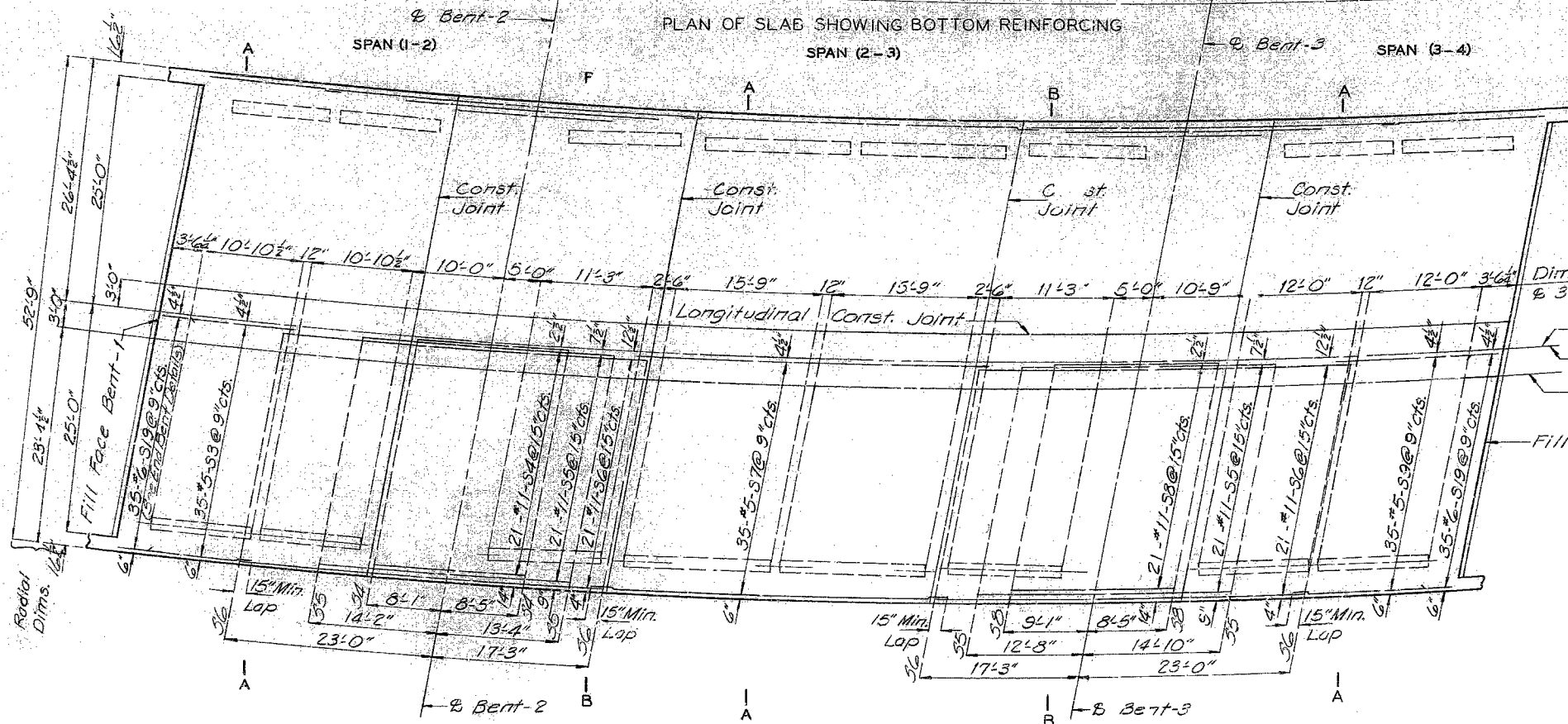
Note: The contractor shall pour and satisfactorily finish the roadway slab at a rate of not less than 37 cubic yards per hour. He shall observe the transverse construction joints shown on plans unless he can demonstrate to the satisfaction of the engineer that he is equipped to pour and satisfactorily finish the roadway slab at a rate which will permit a continuous pouring through some or all of these joints.

Transverse reinforcing shall be parallel to bents with spacing measured along  $\Phi$  36'-0" Thru Lanes.  
 Longitudinal reinforcing shall be placed concentric to  $\Phi$  36'-0" Thru Lanes.  
 Longitudinal dimensions are measured along  $\Phi$  36'-0" Thru Lanes.



SPAN	Chords			Erod Dim's			Spa.			Offset X,Y,Z			Bent						
	L	E	R	A	H	B	C	J	D	Ch	5'	10'	15'	20'	25'	30'			
(1-2)	36'-3"	36'-3"	36'-3"	3'-1"	3'-1"	3'-1"	3	3	3								1	23'-9"	29'-10"
(2-3)	70'-0"	70'-0"	69'-11"	5'-0"	5'-0"	4'-11"	6	6	6								2	23'-9"	29'-10"
(3-4)	39'-3"	39'-3"	39'-3"	4'-7"	4'-7"	4'-7"	3	3	3								4	23'-9"	29'-10"

Note: Transverse dimensions relative to reinforcing steel are radial dimensions.  
 All dimensions are horizontal.



PLAN OF SLAB SHOWING TOP REINFORCING

Note: This drawing is not to scale. Follow dimensions.

Dimensions along  $\Phi$  36'-0" Thru Lanes

$\Phi$  Bridge Rdwy.  
 Reinforcing Symm. abt.  $\Phi$  Bridge Rdwy.  
 $\Phi$  36'-0" Thru Lanes

Fill Face Bent-4

301

DETAILED AUG. 1969 BY R.W.H.  
 CHECKED SEPT. 1969 BY E.A.H.

PLATTE COUNTY

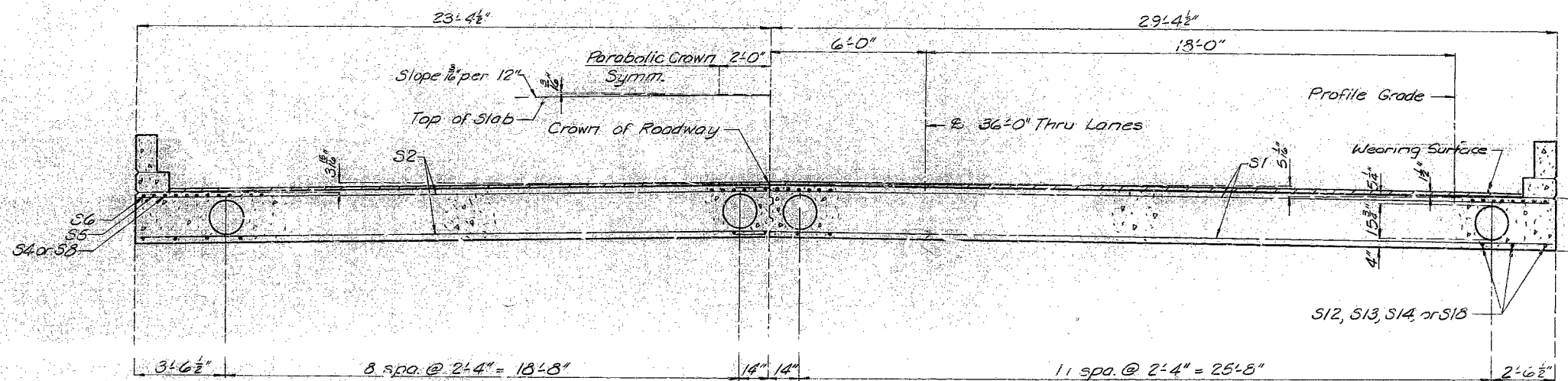
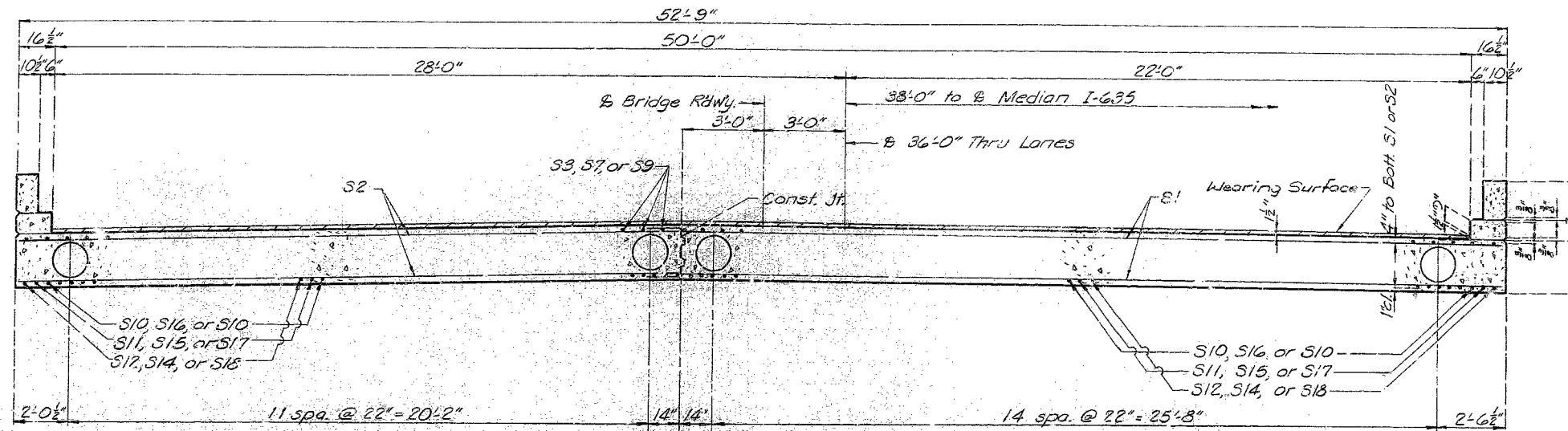
Sheet No. 7 of 9

A-2484

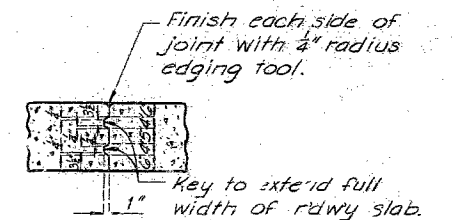


MISSOURI STATE HIGHWAY DEPARTMENT

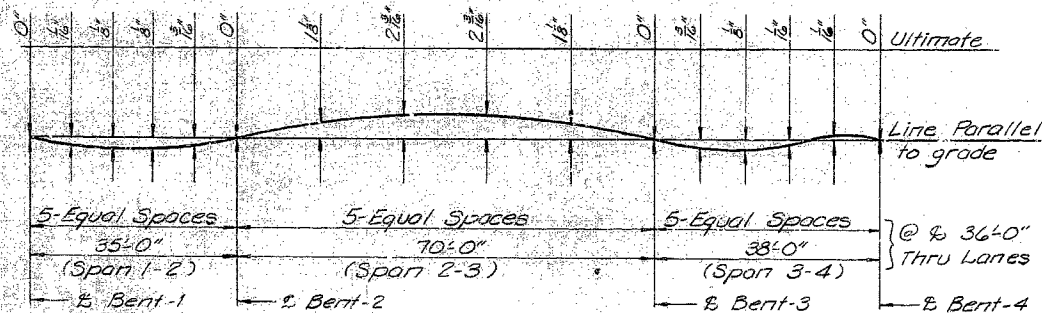
FED. ROAD DIST. NO.	STATE	FED. AID PROJ. NO.	FISCAL YEAR	SHEET NO.	TOTAL SHEETS
5	MO.		19	20	



Note: Tubes for producing voids shall have an outside diameter of 15.7" and shall be anchored at not more than 3'-0" centers. Fiber tubes shall have a wall thickness of not less than .300".

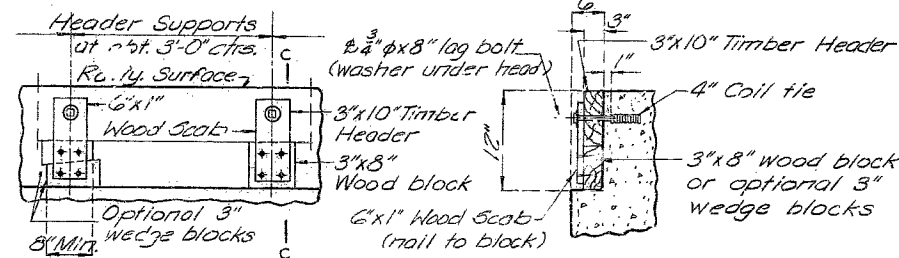


302

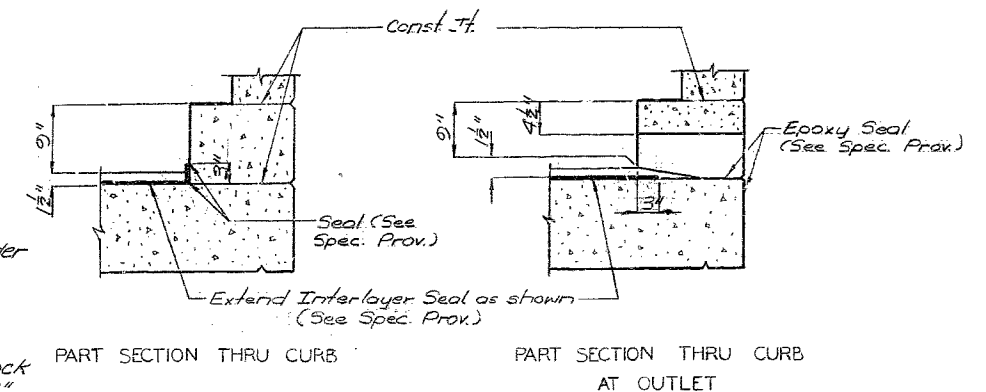


Note: The contractor shall camber forms to allow for ultimate dead load deflection.

Note: Cost of timber headers complete in place to be included in price bid for concrete.



DETAILS OF TIMBER HEADER



PLATTE COUNTY

DETAILED AUG. 1969 BY R.W.H.  
CHECKED SEPT. 1969 BY E.A.H.

Note: This drawing is not to scale. Follow dimensions.

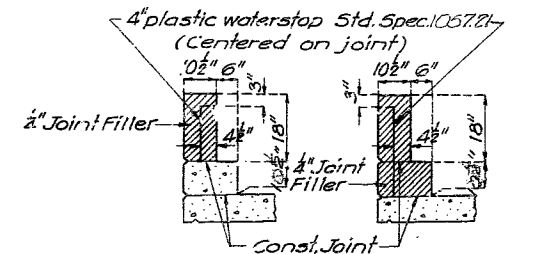
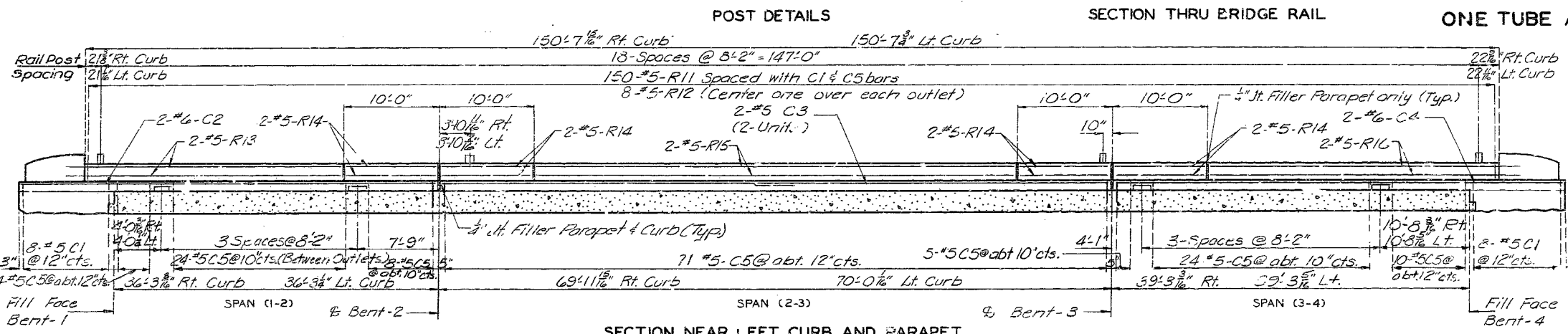
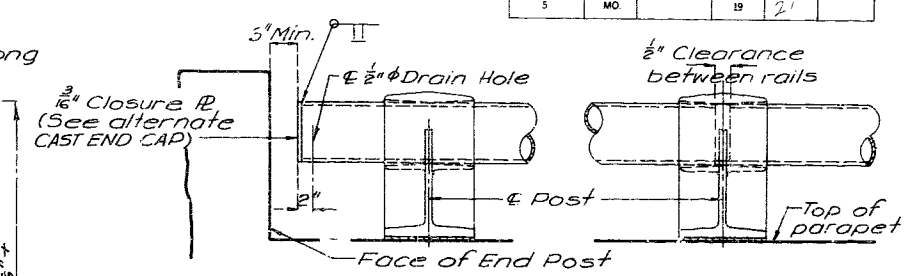
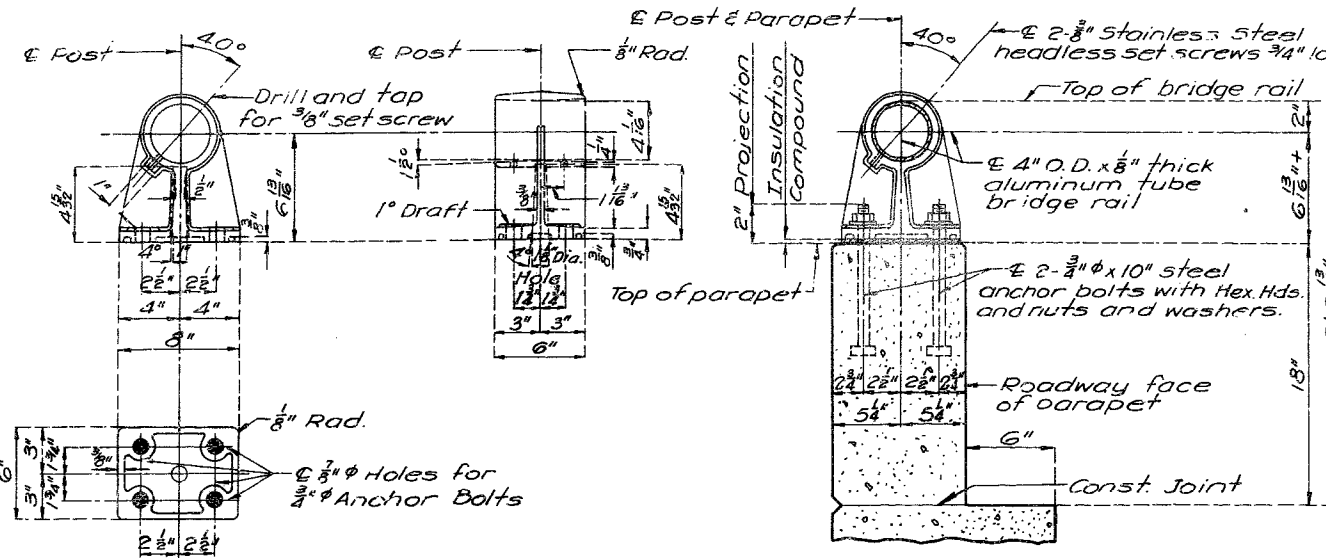


MISSOURI STATE HIGHWAY DEPARTMENT

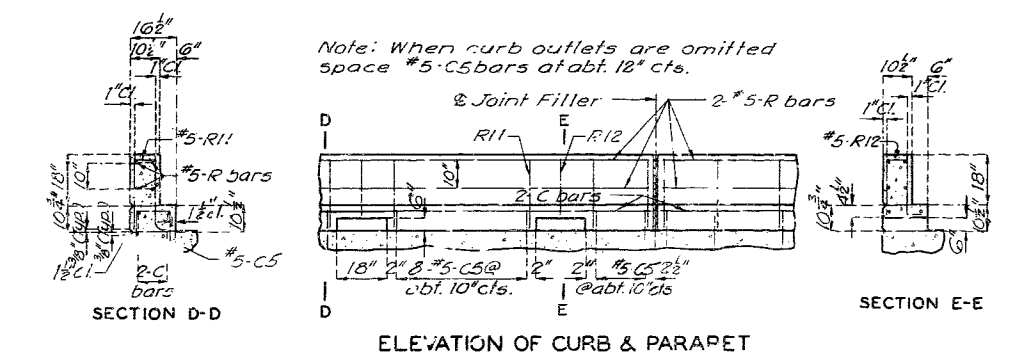
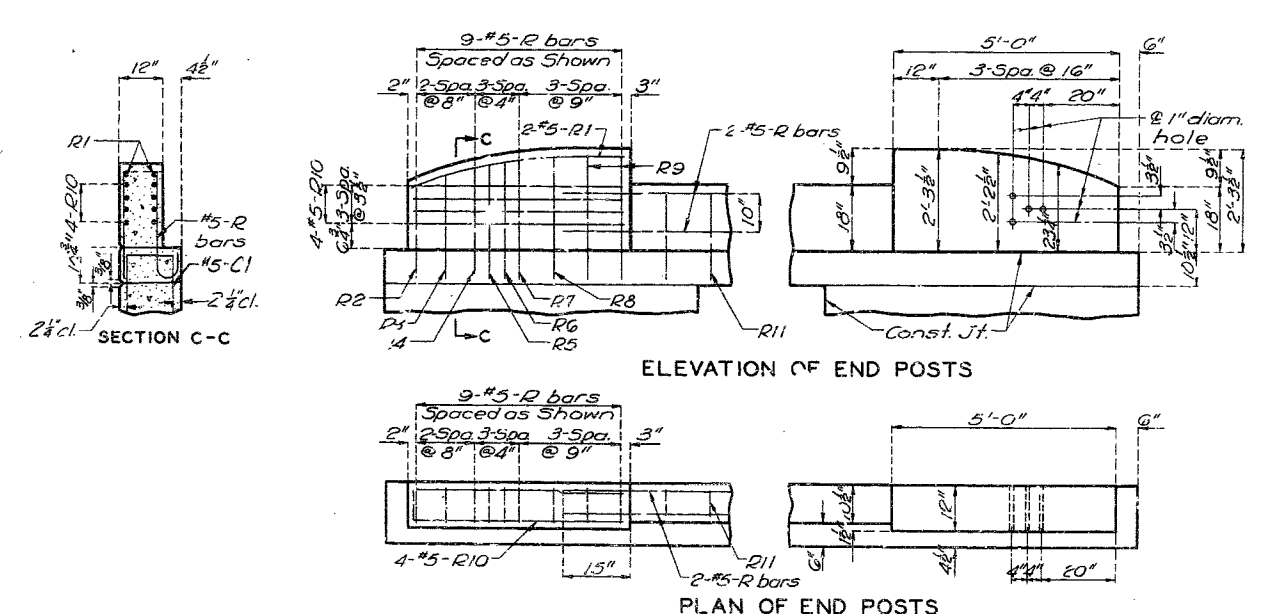
FED. ROAD DIST. NO.	STATE	FED. AID PROJ. NO.	FISCAL YEAR	SHEET NO.	TOTAL SHEETS
5	MO.		19	21	

GENERAL BRIDGE RAIL NOTES:

All bridge rail posts shall be set normal to grade. Aluminum tube bridge rail shall be bent to conform to vertical and horizontal alignment of parapet.  
 Aluminum washer shims between top of parapet and post base may be used for adjusting bridge rail alignment. Maximum thickness of shims to be 3/8". Where more tilting of post is required for proper alignment, concrete bearing areas shall be ground down.  
 All parts of bridge rail, except anchor bolts, nuts, washers, and set screws are to be of aluminum material.  
 All fillets 1/2" except as noted.  
 All drafts 3° except as noted.  
 Omit set screw in side of rail posts adjacent to filled joints in curb and parapet at rail expansion points. Omit set screw in each side of rail post on end bents except where a gap is shown in rail over an expansion device.  
 Top of curbs and parapet to be built parallel to grade with curb and parapet joints (except at end bents) normal to grade.  
 Concrete end posts to be vertical.  
 All exposed edges of end posts shall have 1/4" bevel. All exposed edges of curbs and parapets shall have 1/8" radius or 3° bevel unless otherwise noted.



303



REVISIONS:  
 REVISED OCT. 1966  
 MAR. 1964  
 STD. 1.5.2  
 DETAILED AUG. 1969 BY F.W.H.  
 CHECKED SEPT. 1969 BY E.A.H.

Note: This drawing is not to scale. Follow dimensions.

Shee' No. 9 of 9

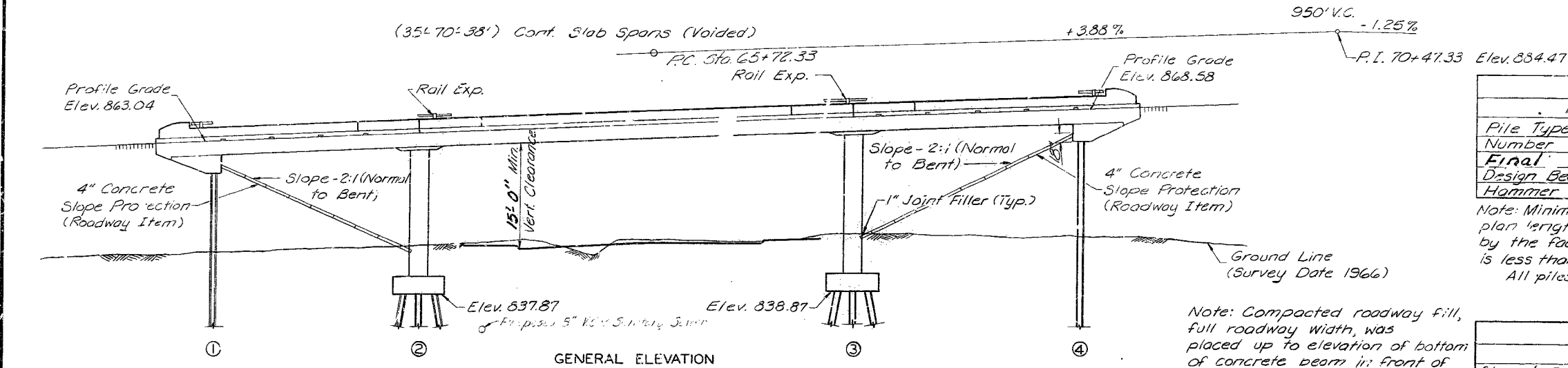
PLATTE COUNTY

A-2484

MISSOURI STATE HIGHWAY DEPARTMENT

FED. ROAD DIST. NO.	STATE	FED. AID PROJ. NO.	FISCAL YEAR	SHEET NO.	TOTAL SHEETS
5	MO.		19	17	

FINAL PLANS



PILE DATA				
Bent No.	1	2	3	4
Pile Type and Size	10BP42	10BP42	10BP42	10BP42
Number	6	15	15	6
Final Length Ft.	48	26-27	27-28	53
Design Bearing Tons	35	52	50	35
Hammer Energy Req'd. Ft. lbs	7,900	11,700	11,300	7,900

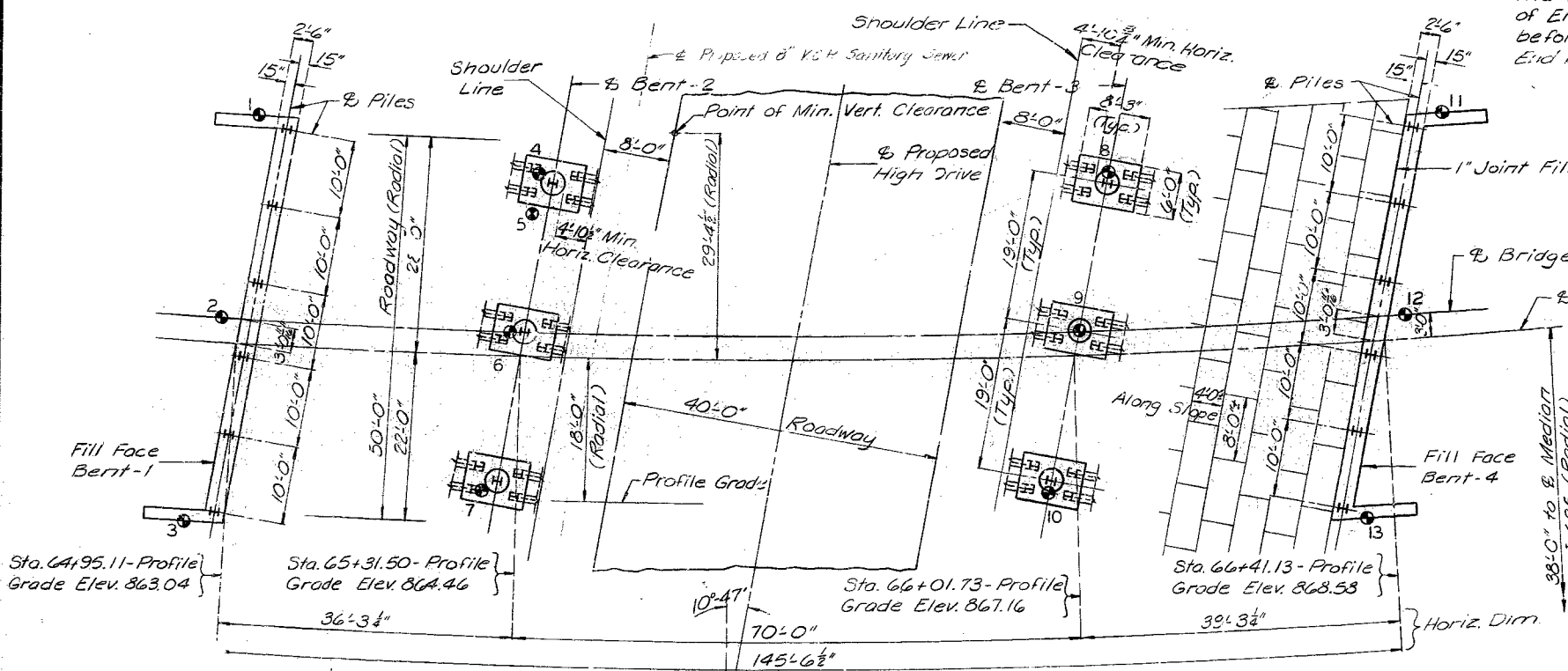
Note: Minimum energy requirement of hammer based on plan length and design bearing values of piles. Increase by the factor (W+W)/2W when the weight of the ram (W) is less than the weight of the pile (W).  
All piles driven to practical refusal.

QUANTITIES	
Item	Quantity
Class I Excavation	Cu. Yd. 26.78
Structural Steel Piles (10")	Lin. Ft. 141.9
Class B1 Concrete	Cu. Yd. 612.7
Reinforcing Steel	Lbs. 138,440
Bridge Ra. (One Tube)	Lin. Ft. 300
Coal Tar Interlayer Protective Coat	Sq. Yd. 809
Special Type "D" Mixture (Asphaltic Concrete)	Ton. 56

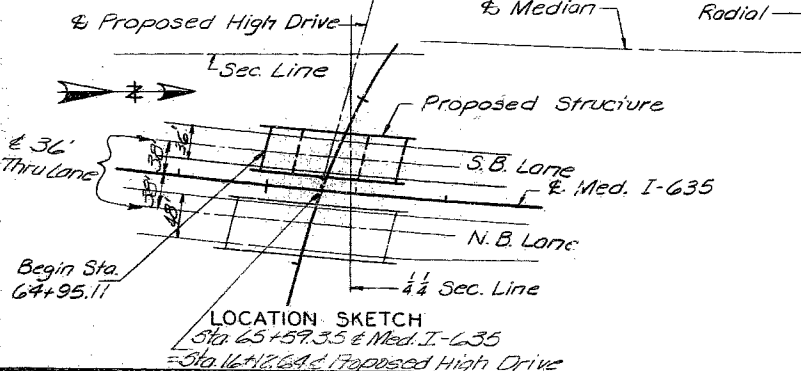
Note: Compacted roadway fill, full roadway width, was placed up to elevation of bottom of concrete beam in front of and not less than 25'-0" in back of End Bents No. 1 and 4 before piles were driven at the End Bents.

BM-Bolt head in curb at SW corner Br. A-2484 Elev. 863.70  
BM-Bolt head in curb at NE corner Br. A-2484 Elev. 869.42

GENERAL NOTES:  
Design Specifications: A.A.S.H.O.-1969  
Design Loading: HS20-44  
Modified 24,000\* Ton/ft. Axle  
Earth 120\* Equivalent Fluid Pressure 30\*  
Design Unit Stresses:  
Class B1 Concrete  $f_c = 1,600$  psi  
Reinforcing Steel  $f_s = 20,000$  psi  
Steel Pile  $f_b = 9,000$  psi  
Falsework over existing lanes constructed with a minimum vertical clearance of 12'-6" from crown of existing lanes and a minimum lateral clearance of 23'-0" centered on existing lanes.  
Minimum clearance to reinforcing steel 1 1/2" unless otherwise shown.  
Profile grade elevations are taken at top of wearing surface  
B.M. Elev



Note: Stations are along E. Median I-635.  
Slope protection continuous across median.  
Bents cannot be accurately located from the reference point on the tangent by conventional survey methods based on 100' chords. All bents are parallel.  
For Boring Data see Sheet No. 3 of 9.  
⊙ Indicates location of boring.  
For Substructure Layout see Sheet No. 5 of 9.



SUBMITTED BY E. LYN CROWLEY  
SIGNATURE E. Lyn Crowley  
REGISTERED PROFESSIONAL ENGINEER  
SERIAL NUMBER E-5993



BRIDGE OVER HIGH DRIVE  
STATE ROAD-INTERSTATE ROUTE 635  
IN RIVERSIDE  
PROJECT NO. I-15-932-R75 (RTE I-635) STA. 64+95.11 LT. L.A.  
PLATTE COUNTY

SUBMITTED BY W. D. Carney DATE 1-24-72  
APPROVED BY R. J. Venter DATE 1-24-72

CROWLEY, WADE, MILSTEAD, INC.  
ENGINEERS-ARCHITECTS  
INDEPENDENCE, MISSOURI

Designed T.R. Beckley 7/68 Checked J.K. Zeik 7/68  
Detailed P.W. Hawkins 4/68 Checked E.A. Hollahan 9/68  
Quantities E.A. Hollahan 7/68 Checked T.R. Beckley 7/68

Note: This drawing is not to scale. Follow dimensions.

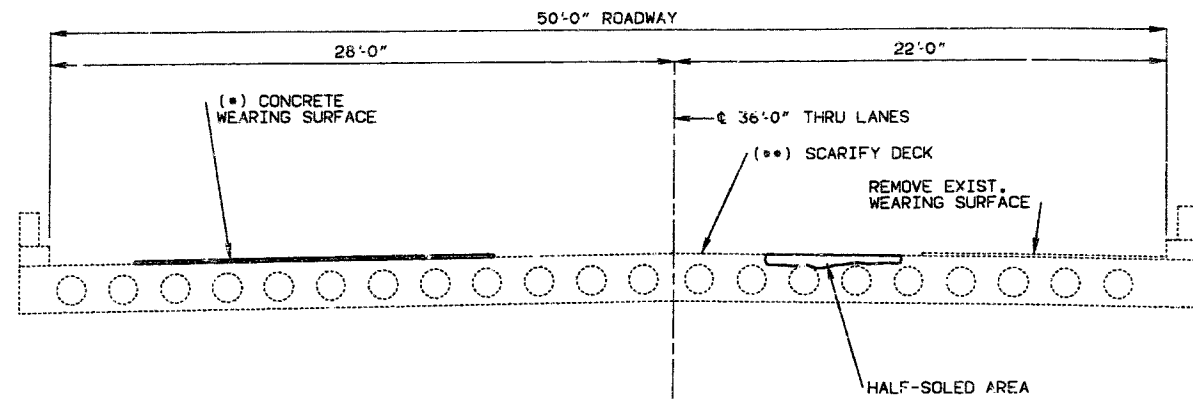
Sheet No. 14 of 9 FINAL PLAN

DWG. 611.60  
DWG. 706.30A  
A-2484

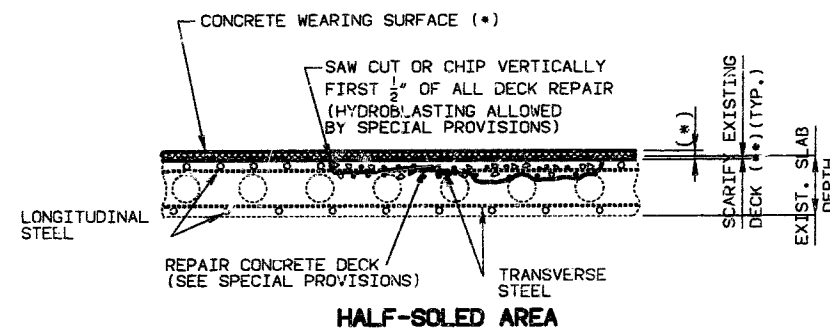
304

MISSOURI HIGHWAY AND TRANSPORTATION COMMISSION

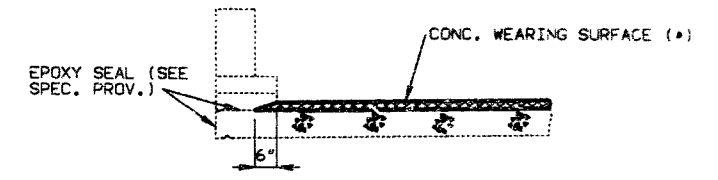
STATE	PROJ. NO.	SHEET NO.
MO.		174
SEC./SUR. 4 TWP. 50N RGE. 33W		



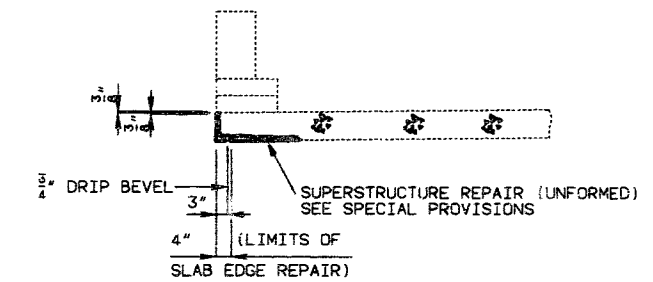
TYPICAL SECTION THRU SLAB



HALF-SOLED AREA



DETAIL THRU CURB OUTLET



PART SECTION THRU SLAB

GENERAL NOTES:

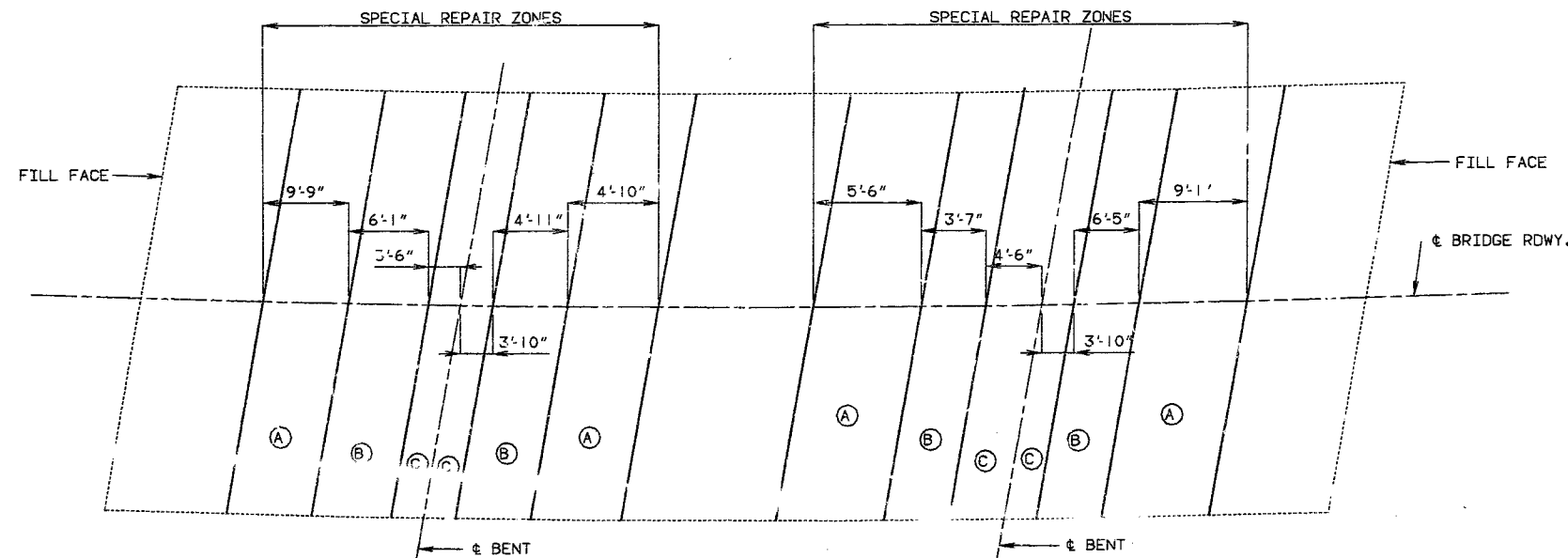
- DESIGN SPECIFICATIONS A.A.S.H.T.O. 1989
- OUTLINE OF OLD WORK IS INDICATED BY LIGHT DASHED LINES. HEAVY LINES INDICATES NEW WORK.
- MAINTAIN TRAFFIC ON STRUCTURE DURING CONSTRUCTION. (SEE ROADWAY PLANS.)
- ROADWAY SURFACING ADJACENT TO BRIDGE ENDS TO MATCH EXISTING CONCRETE DECK PLUS 1/2"±.

ESTIMATED QUANTITIES

ITEM		TOTAL
ASPHALT REMOVAL (BRIDGES)	SQ. FT.	7,277
SUPERSTRUCTURE REPAIR (UNFORMED)	SQ. FT.	100
REPAIRING CONCRETE DECK (HALF SOLING)	SQ. FT.	150
( ) CONCRETE WEARING SURFACE	SQ. YD.	809
SLAB EDGE REPAIR (BRIDGES)	LIN. FT.	20

• SEE JOB SPECIAL PROVISIONS FOR ALTERNATE USE OF 1 3/4" (MIN.) LATEX MODIFIED CONCRETE OR 2" (MIN.) LOW SLUMP CONCRETE WEARING SURFACE.

•• SCARIFY EXIST. DECK 1/4" (MIN.) IF LATEX MODIFIED CONCRETE IS USED, OR 1/2" (MIN.) IF LOW SLUMP CONCRETE IS USED.



PLAN OF SLAB SHOWING SPECIAL REPAIR ZONES

NOTE: ANY REPAIR IN THE REMAINDER OF THE BRIDGE THAT IS WITHIN 4'-0" OF ZONE A SHALL BE COMPLETED BEFORE REMOVING OLD CONCRETE IN ZONE A. ZONES WITH THE SAME LETTER DESIGNATION MAY BE REPAIRED AT THE SAME TIME.

DESIGNED AUG. 1990  
 DETAILED AUG. 1990  
 CHECKED AUG. 1990

NOTE: THIS DRAWING IS NOT TO SCALE. FOLLOW DIMENSIONS.

SHEET NO. 1 OF 1.

REPAIRS TO (S.B.L.) BRIDGE OVER HIGH DRIVE

STATE ROAD FROM STATE LINE TO RTE. I-29 IN RIVERSIDE

PROJECT NO. F.A.-635-1 (247) STA. 64+95.11±

JOB NO. 4I 930-635 RTE. I-635

PLATTE COUNTY

DATE 2/4/91

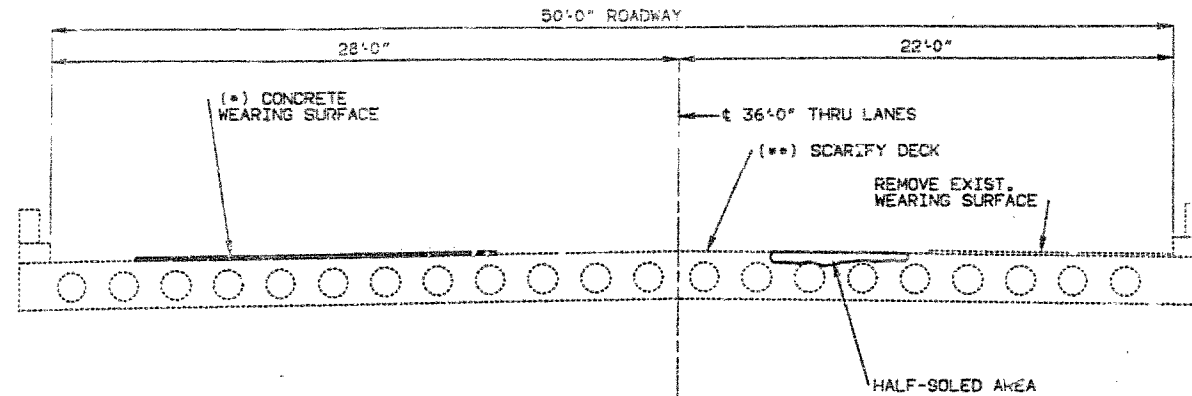
STD.
STD.
A-2484R

43/878

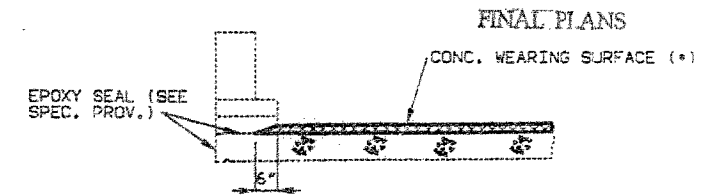
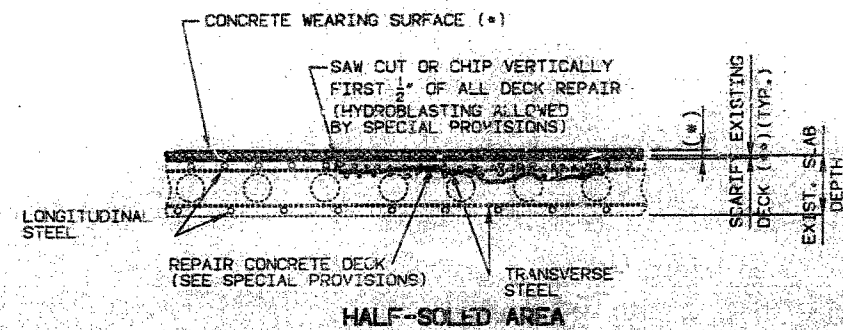
MISSOURI HIGHWAY AND TRANSPORTATION COMMISSION

41

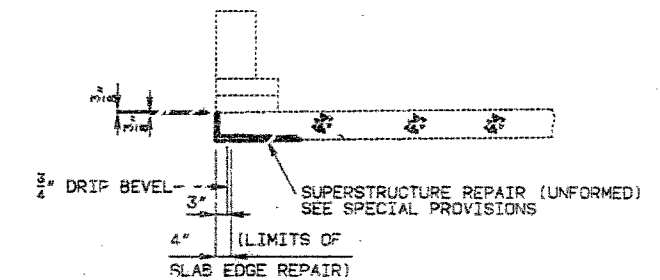
STATE	PROJ. NO.	SHEET NO.
MO.	FA-635-1(247)	41
SEC./SUR. 4	TWP. 50N RGE. 33W	



TYPICAL SECTION THRU SLAB



DETAIL THRU CURB OUTLET



PART SECTION THRU SLAB

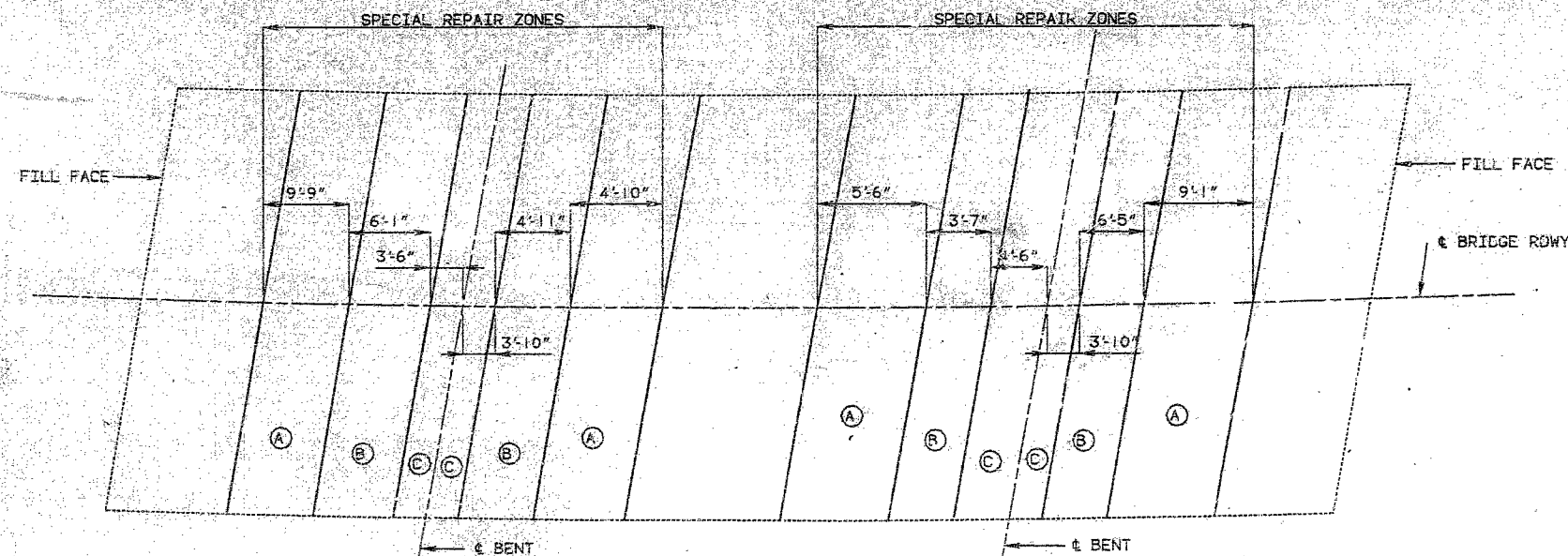
GENERAL NOTES:

DESIGN SPECIFICATIONS A.A.S.H.T.O. 1989  
 OUTLINE OF OLD WORK IS INDICATED BY LIGHT DASHED LINES. HEAVY LINES INDICATES NEW WORK.  
 MAINTAIN TRAFFIC ON STRUCTURE DURING CONSTRUCTION. (SEE ROADWAY PLANS.)  
 ROADWAY SURFACING ADJACENT TO BRIDGE ENDS TO MATCH EXISTING CONCRETE DECK PLUS 1/2"±.

FINAL QUANTITIES		
ITEM		TOTAL
ASPHALT REMOVAL (BRIDGES)	SQ. FT.	7,277
SUPERSTRUCTURE REPAIR (UNFORMED)	SQ. FT.	60
REPAIRING CONCRETE DECK (HALF SOLING)	SQ. FT.	70
( ) CONCRETE WEARING SURFACE (LOW SLUMP)	SQ. YD.	809
SLAB EDGE REPAIR (BRIDGES)	LIN. FT.	76

\* SEE JOB SPECIAL PROVISIONS FOR 2" (MIN.) LOW SLUMP CONCRETE WEARING SURFACE.

\*\* SCARIFY EXTST. DECK 1/2" (MIN.) FOR LOW SLUMP CONCRETE



PLAN OF SLAB SHOWING SPECIAL REPAIR ZONES

NOTE: ANY REPAIR IN THE REMAINDER OF THE BRIDGE THAT IS WITHIN 4'-0" OF ZONE A SHALL BE COMPLETED BEFORE REMOVING OLD CONCRETE IN ZONE A.  
 ZONES WITH THE SAME LETTER DESIGNATION MAY BE REPAIRED AT THE SAME TIME.

432278

DESIGNED AUG. 1990  
 DETAILED AUG. 1990  
 CHECKED AUG. 1990

NOTE: THIS DRAWING IS NOT TO SCALE, FOLLOW DIMENSIONS.

SHEET NO. 1A OF 1.

REPAIRS TO (S.B.L.) BRIDGE OVER HIGH DRIVE

STATE ROAD FROM STATE LINE TO RTE. I-29 IN RIVERSIDE

PROJECT NO. FA-635-1(247) STA. 64+95.11±

JOB NO. 41 990-635 RTE. I-635

PLATTE COUNTY

DATE: 1/19/91

STD.
STD.
A-2484R